

Partners and Sponsors

The Impact of Development workshop has been made possible through the support of the Resources, Economy, and Society Research Group (RESRG) at Lakehead University, ReSDA: Resources and Sustainable Development in the Arctic, Lakehead University Department of History, Canadian International Council – Thunder Bay Branch, Lakehead University Faculty of Social Sciences and Humanities, and the Social Sciences and Humanities Research Council of Canada.



Faculty of Social Sciences and Humanities



Social Sciences and Humanities
Research Council of Canada

Conseil de recherches en
sciences humaines du Canada



The Impact of Development: Single Industry Communities and Capital Mobility



March 1 and 2, 2018

Trinity United Hall

310 Park Avenue

Thunder Bay, Ontario

Overview

Over the past few decades, many Northern communities have experienced little sustained economic growth and now find themselves at a crossroads where the uncertain future of their extractive resource-based economies is combining with changes in global markets and undermining their social and economic prosperity. The recent global economic turmoil has exacerbated this trend by tying the fiscal hands of government, accelerating the decline in business investments, increasing unemployment dramatically and by stripping away markets and opportunities elsewhere.

The Impact of Development is a workshop that seeks to understand how single industry communities looking to the future can ensure that they will not repeat the mistakes of the past. The workshop offers both a regional and international focus on the various impacts of development on communities that depend on a single industry. A major consideration of the workshop is the place of northern economies in a changing world where competition comes in new forms and from many directions.

The goal of the workshop is to better understand the development of resource dependent communities in Canada in a comparative perspective. In particular, the workshop will examine how communities have attempted to remain resilient and what lessons can be learned from the evolving development of extractive industries in Canada and abroad. The workshop will bring presenters together to discuss future research that will assist northern communities in better understanding the challenges they face in the context of the global economic shifts currently taking place.

Friday, March 2 continued

First Nations and Development – 1:00 pm



Comprehensive Community Planning: Finding "Bimadizowin"

(Melanie Harding, Nishnawbe Aski Development Fund)

Energy Transmission Development (Mathew Dupuis, Red Rock First Nation)

Aboriginal Involvement in Mining Development: Challenges & Opportunities (Karen Peterson, Independent Scholar)

Moderator: Peggy Smith

Looking Back and Looking Forward – 3:00pm



Resources and the NWO Economy: Past, Present & Future

(Livio Di Matteo, Lakehead University)

The Pathway to Sustainability and Management of Ontario's Forests (Michel Beaulieu and Amanda Lino, Lakehead University)

Short Circuit: Ontario's Electrical Utilities, Northern Ontario, 1906-1998

(Brandon Cordeiro, McMaster University)

Moderator: Michael Stevenson

Friday, March 2

Other Perspectives on Development – 9:00 am



**'Honour, Alienation, and Engagement':
Working Class Jobs and Structural
Transitions**

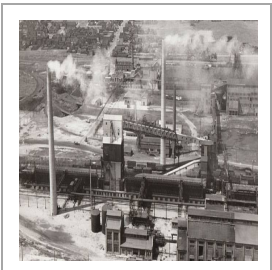
(Jennifer Jarman, Lakehead University)

**Development and the Political Right on
the Margins of Europe: The Case of
Hungary**

(Steven Jobbitt, Lakehead University)

Moderator: Michael Stevenson

In Times of Crisis – 10:30 am



**The Rise and Fall of Forestry in
Northeastern New Brunswick**

(David Blanchard, Lakehead University)

**Echoes and Features: Steep Rock Iron
Mine**

(Richard Mastrangelo, Independent Scholar)

**Before the Fall: G.I. Smith and the Sydney
Steel Crisis, 1967**

(Lachlan MacKinnon - Gorsebrook Research
Institute for Atlantic Canada)

Moderator: Michel S. Beaulieu

At a Glance

Day 1 – Thursday March 1

9:00 am - Welcome and Introductions

9:15 am - 10:00 am - When the Mill Shuts Down

10:00 am Coffee

10:15 am - 12:00 - Northwestern Ontario

12:00 pm - 1:00 pm - Lunch

1:00 pm - Arctic Development

2:45 pm - Coffee Break

3:00 pm - 4:30 pm - Latin American Development

Day 2 – Friday March 2

9:00 am - 10:00 am - Other Perspectives on Development

10:15 - Coffee Break

10:30 am - In Times of Crisis

12:00 am - 1:00 pm Lunch

1:00 pm - First Nations and Development

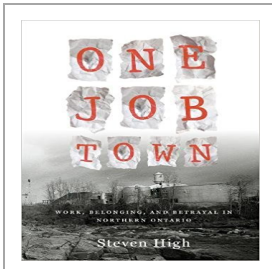
3:00 pm - Looking Back and Looking Forward

4:30 pm – Closing Remarks

Thursday, March 1

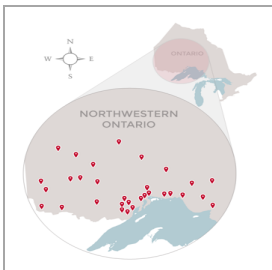
Welcome and Introduction – 9:00 am

When the Mill Shuts Down – 9:15 am



One Job Town: Work, Belonging and Betrayal in Northern Ontario
(Steven High, Concordia University)
(Live Stream from Montreal)

Northwestern Ontario – 10:15 am



Community Capacity Building for Energy Sovereignty: An Aboriginal Case Study
(Roopa Rakshit)

Combating Colonialism: Rethinking Development Policy and Mapping
(Dan Duckert, Lakehead University)

Perspectives on the Social, Economic and Environmental Impacts of All-Season Roads in Two Remote First Nation Communities in Northern Ontario
(Chander Shahi, Lakehead University)

Moderator: Chris Southcott

Thursday, March 1 continued

Arctic Development – 1:00 pm



The Development Concerns of Arctic Communities
(Chris Southcott, Lakehead University)

North Slope of Alaska: An example of Indigenous development that works?
(Lee Huskey, University of Alaska Anchorage)

Indigenous Communities and Sustainable Resource Development in the Russian Arctic
(Andrey Petrov, University of Northern Iowa)

Moderator: C. Nathan Hatton

Latin American Development – 3:00 pm



Security, Development and Informal Mining in Colombia
(Jim Rochlin, University of British Columbia)

Colombia: Among mining and conflict. A study-case of Canadian mining companies in Indigenous territories
(Luisa Isidro - Independent Scholar)

Agroforestry on the Uruguayan Pampas
(Ronald Harpelle, Lakehead University)

Moderator: Jennifer Jarman