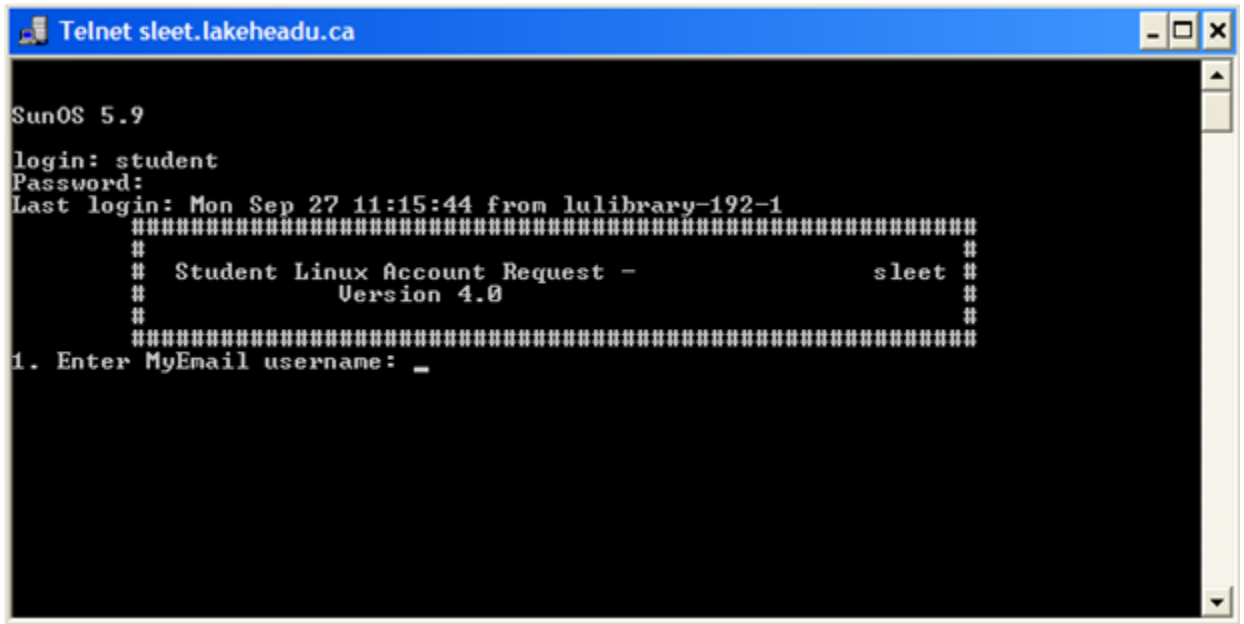


# SHAZAM (using WinSCP)

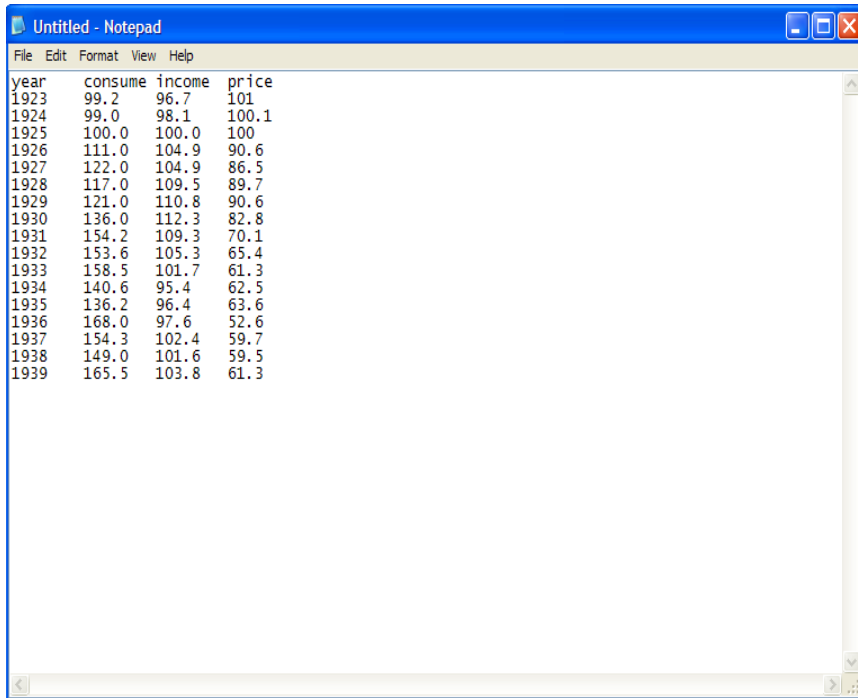
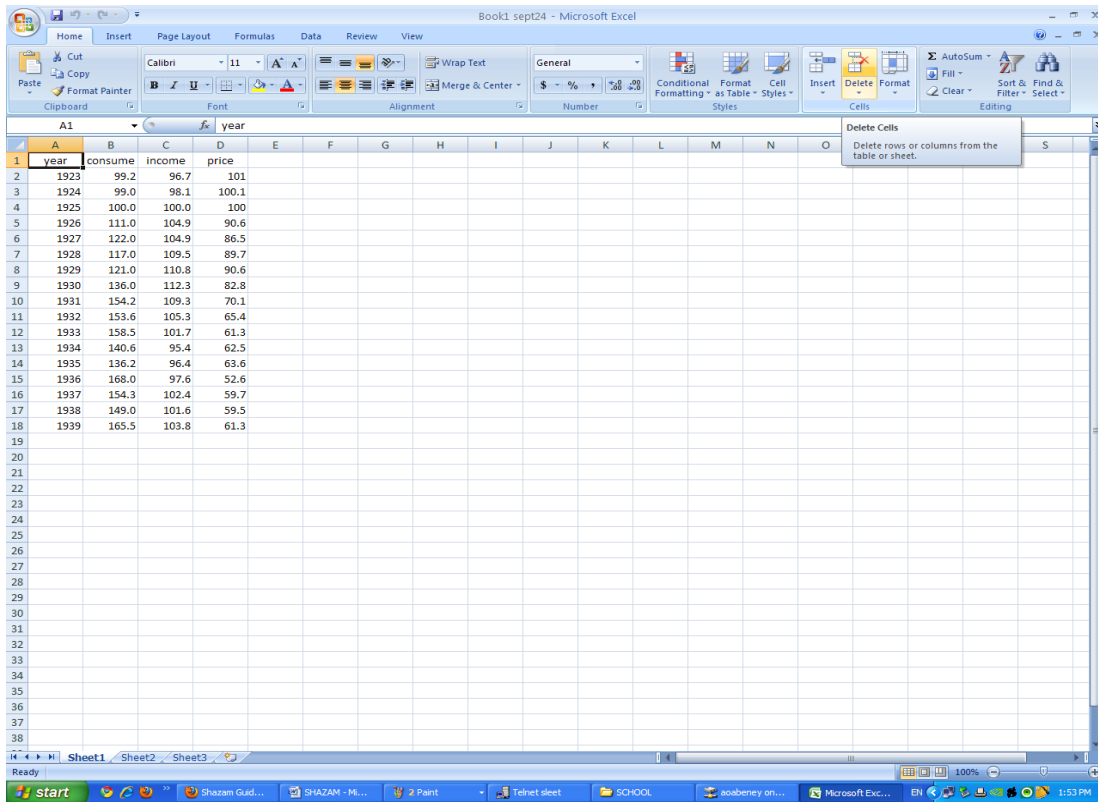
Before You Begin (carry on to “Step 1” if you have already set up a Sleet account):

- Create a Sleet account by clicking on <Start>, followed by <Run>, and then entering “telnet”
- Type “o sleet” next to <Microsoft Telnet>
- Use the word “student” as a username and “lakehead” as a password
- You will then be prompted to create your “MyEmail username” and password



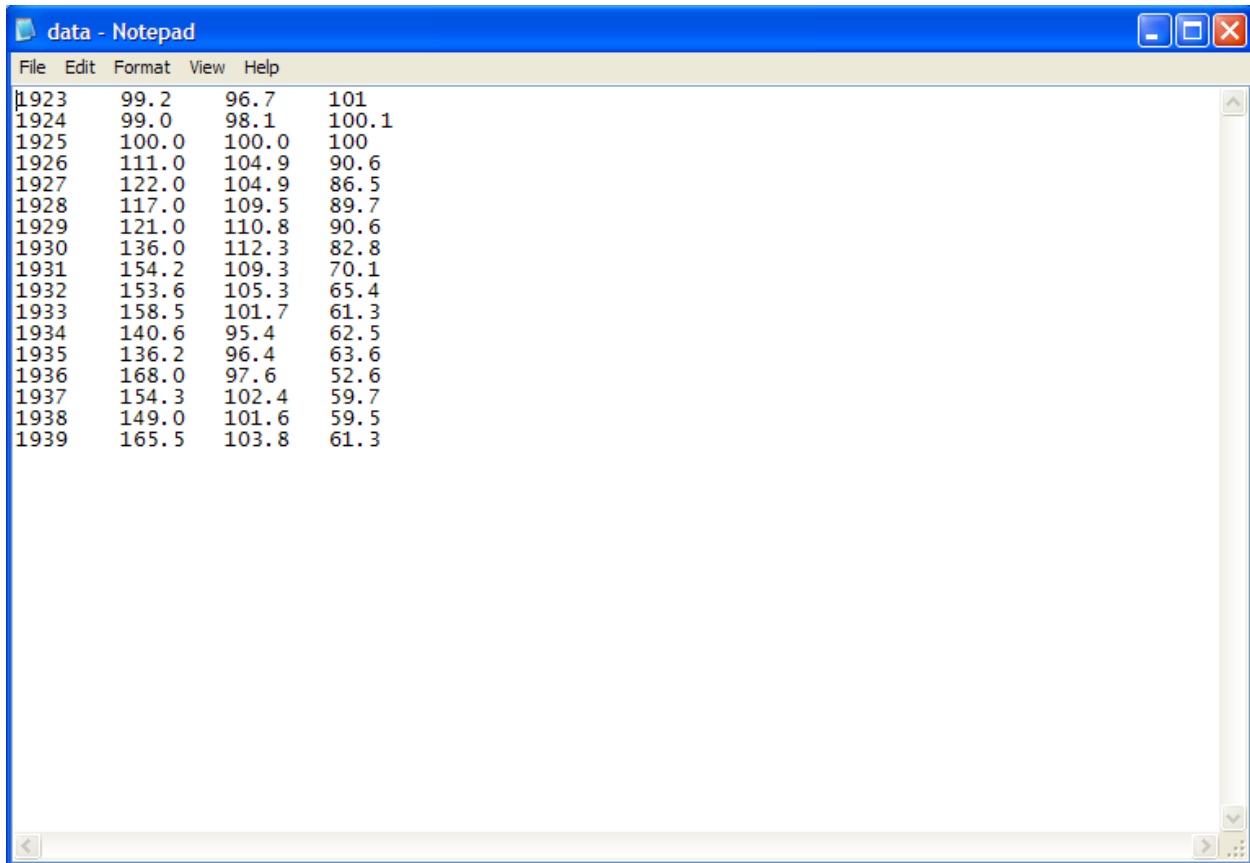
```
Telnet sleet.lakeheadu.ca
SunOS 5.9
login: student
Password:
Last login: Mon Sep 27 11:15:44 from lulibrary-192-1
#####
# Student Linux Account Request - sleet #
# Version 4.0 #
#####
1. Enter MyEmail username: _
```

**Step 1: Transfer your Excel data to a Notepad by using the “copy” and “paste” function.**



**Step 2: Delete all variable titles (first row) and save to a Notepad file**

*Example: "data"*

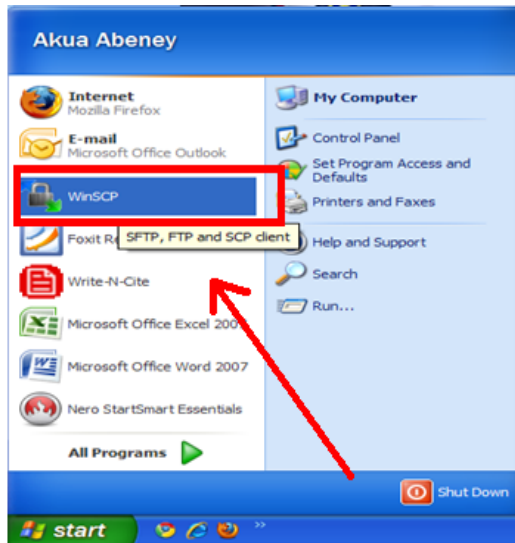


The image shows a Notepad window titled "data - Notepad" with a menu bar containing "File", "Edit", "Format", "View", and "Help". The text area contains a table of data with four columns. The first column contains years from 1923 to 1939. The second, third, and fourth columns contain numerical values. The data is as follows:

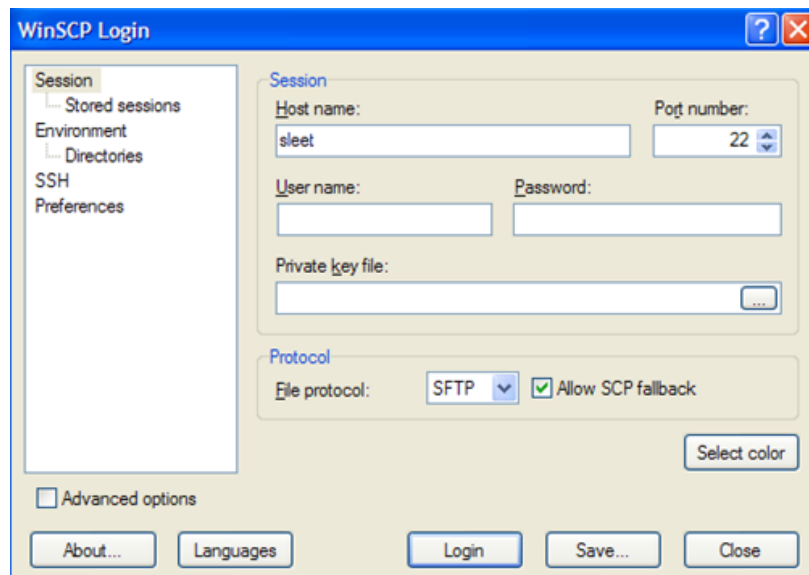
1923	99.2	96.7	101
1924	99.0	98.1	100.1
1925	100.0	100.0	100
1926	111.0	104.9	90.6
1927	122.0	104.9	86.5
1928	117.0	109.5	89.7
1929	121.0	110.8	90.6
1930	136.0	112.3	82.8
1931	154.2	109.3	70.1
1932	153.6	105.3	65.4
1933	158.5	101.7	61.3
1934	140.6	95.4	62.5
1935	136.2	96.4	63.6
1936	168.0	97.6	52.6
1937	154.3	102.4	59.7
1938	149.0	101.6	59.5
1939	165.5	103.8	61.3

### **Step 3: Transfer your data to the Sleet server**

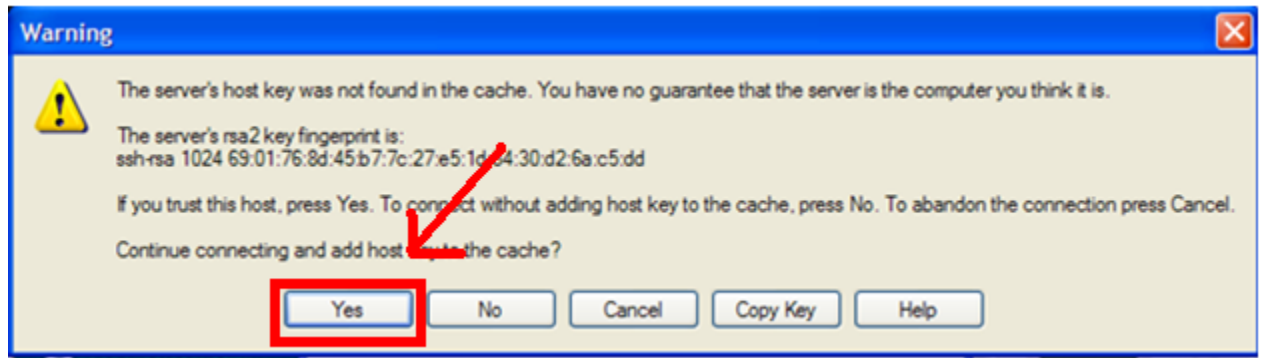
- Click <Start>, followed by <WinSCP>



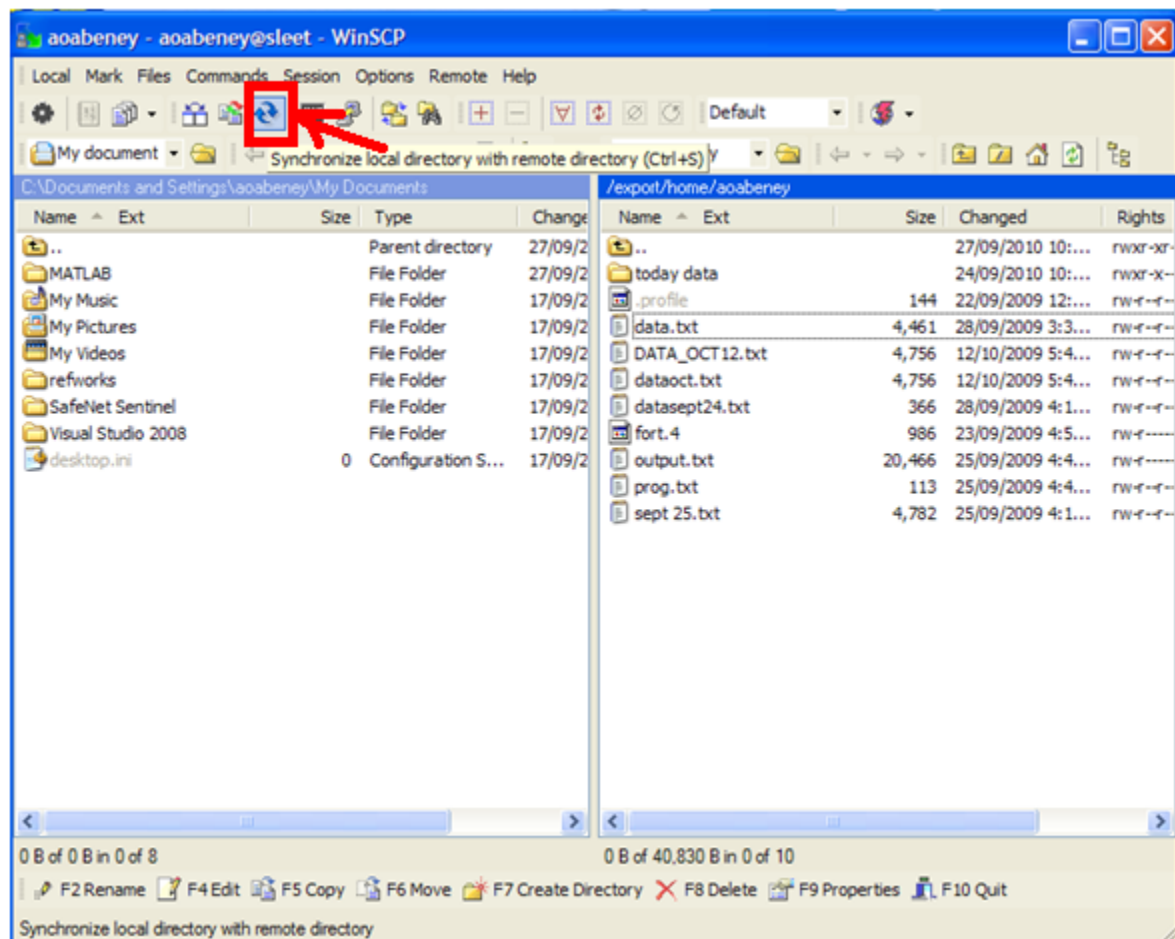
### **Step 4: Type the word “sleet” under <Host name> and enter your username and password under the respective headings**



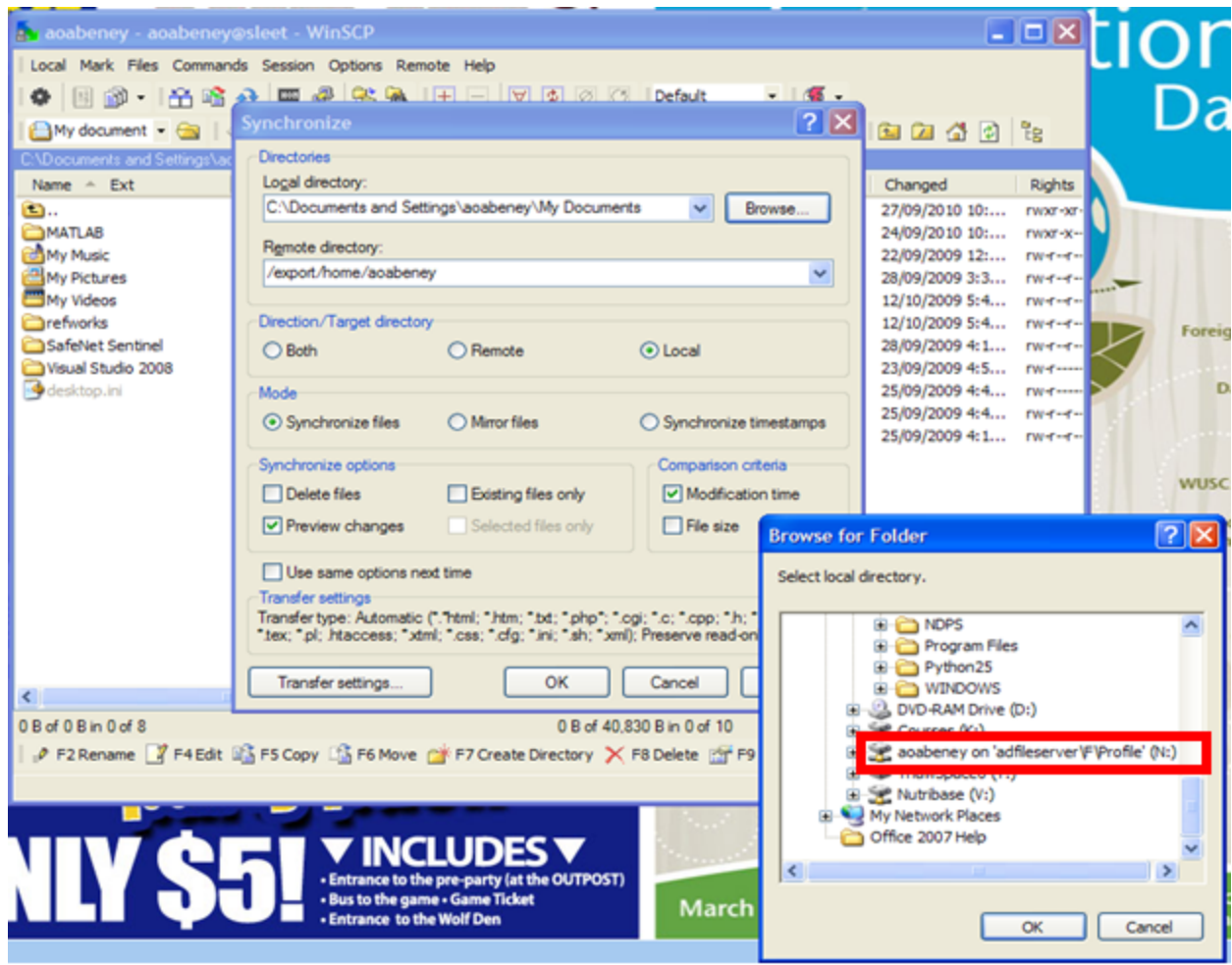
### **Step 5: Answer “Yes” to the “Warning” prompt**



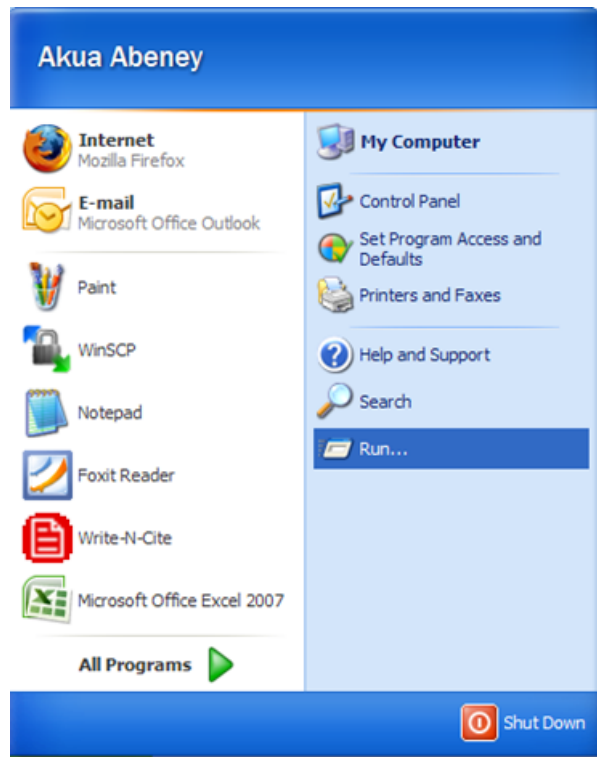
**Step 6:** Click on the <synchronize> button.



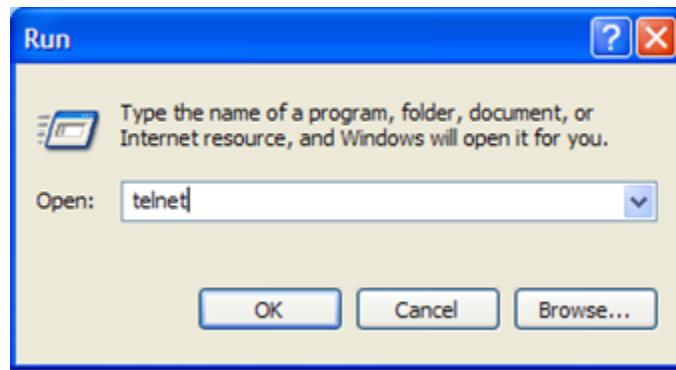
**Step 7:** Select folder containing your data information and click "OK"



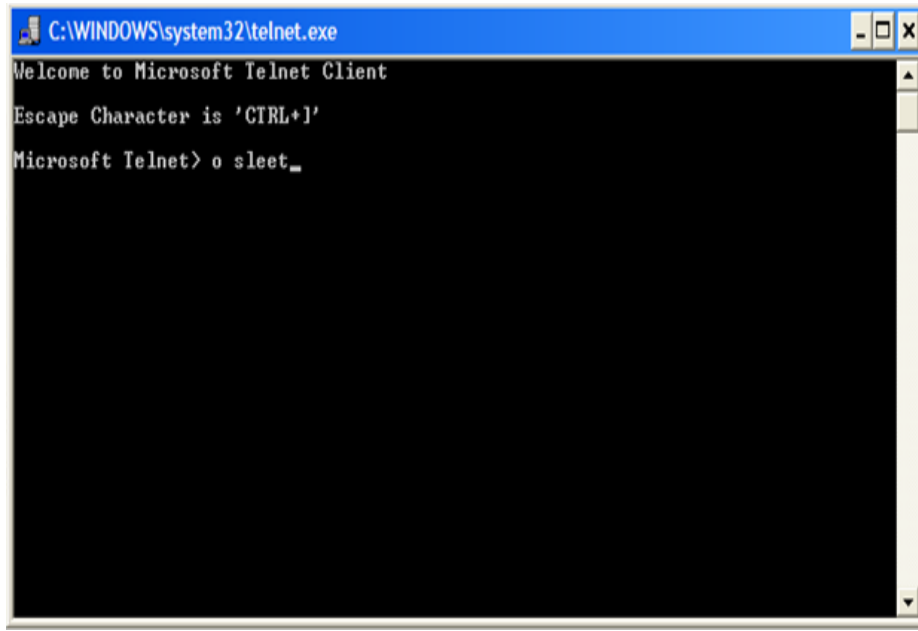
**Step 8:** Open SHAZAM by selecting <Start> followed by <Run>



**Step 9: Type “telnet” next to <Open> in the “Run” window**

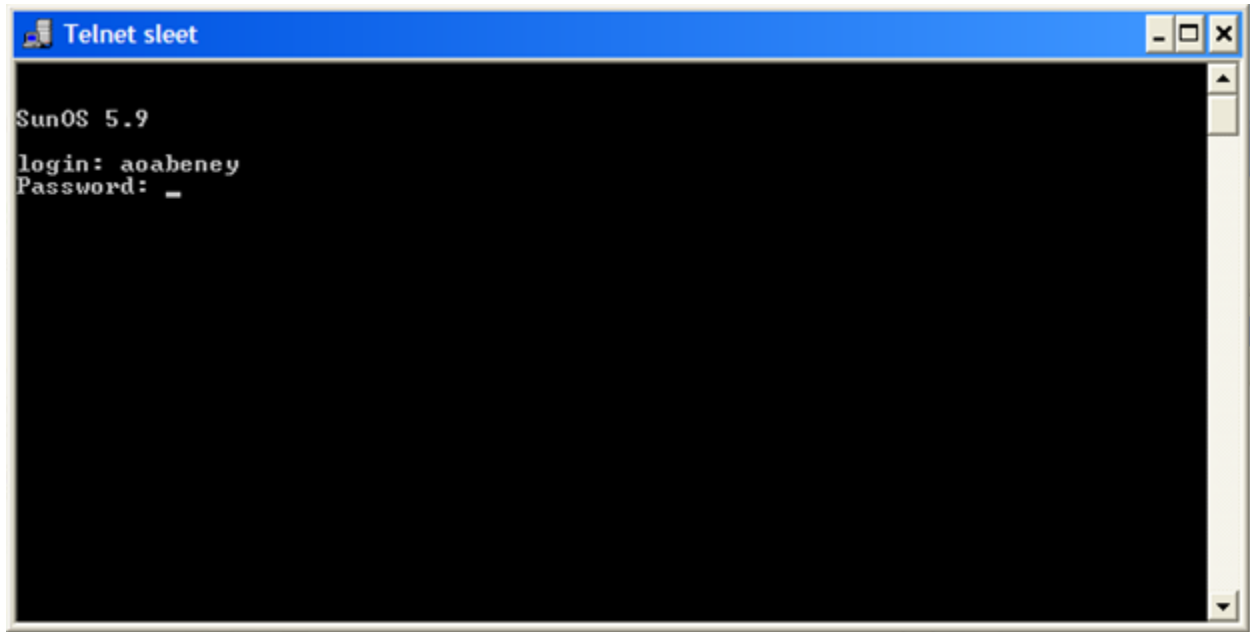


**Step 10:** Type “o sleet” next to <Microsoft Telnet>, once the Telnet window appears



A screenshot of a Windows command prompt window titled "C:\WINDOWS\system32\telnet.exe". The window has a blue title bar and standard window controls. The text inside the window reads: "Welcome to Microsoft Telnet Client", "Escape Character is 'CTRL+J'", and "Microsoft Telnet> o sleet\_".

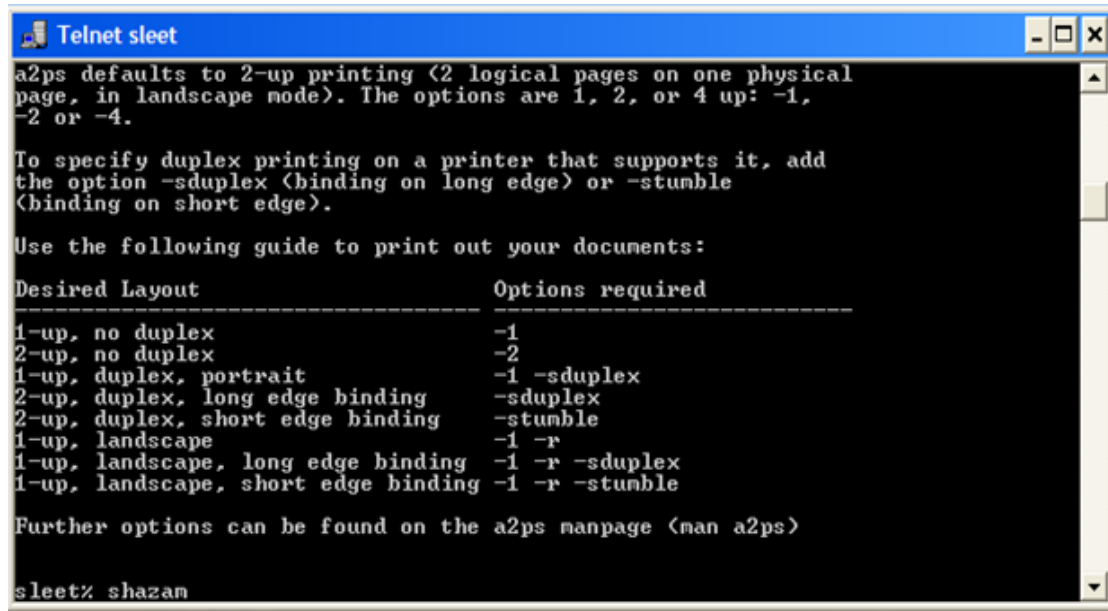
**Step 11:** Type in your login username and password



A screenshot of a Telnet window titled "Telnet sleet". The window has a blue title bar and standard window controls. The text inside the window reads: "SunOS 5.9", "login: aoabene", and "Password: \_".



**Step 12:** Type “shazam” next to <sleet %>. You are now ready to use SHAZAM



```
Telnet sleet
a2ps defaults to 2-up printing (2 logical pages on one physical
page, in landscape mode). The options are 1, 2, or 4 up: -1,
-2 or -4.

To specify duplex printing on a printer that supports it, add
the option -sduplex (binding on long edge) or -stumble
(binding on short edge).

Use the following guide to print out your documents:

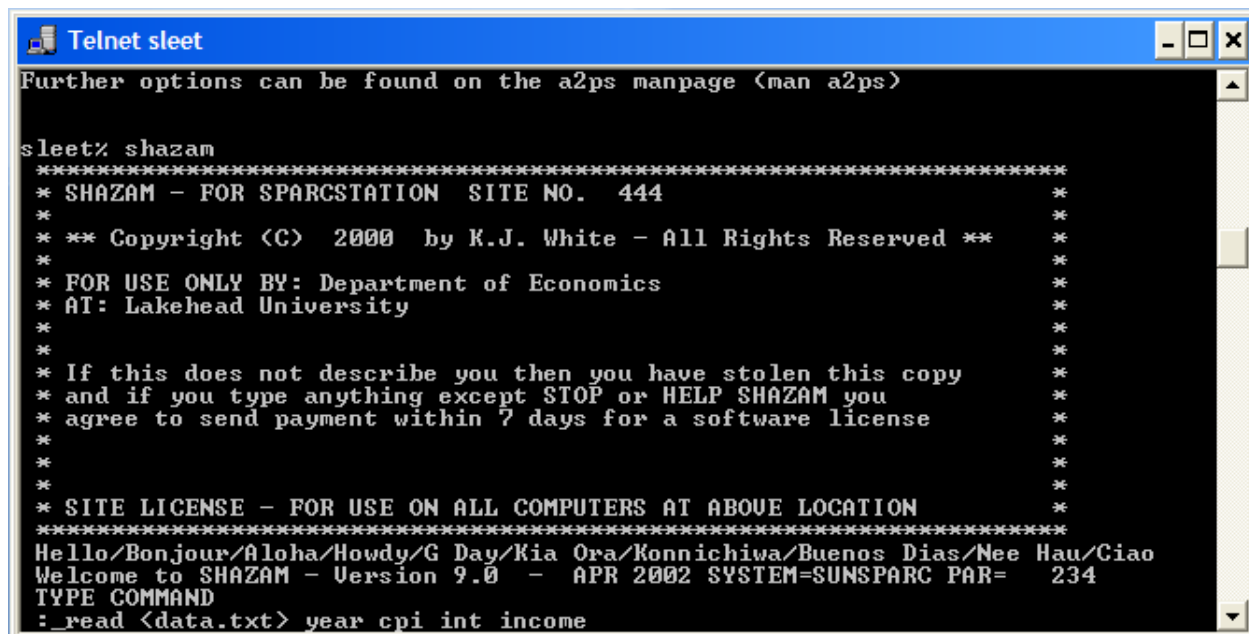
Desired Layout          Options required
-----
1-up, no duplex         -1
2-up, no duplex         -2
1-up, duplex, portrait  -1 -sduplex
2-up, duplex, long edge binding -sduplex
2-up, duplex, short edge binding -stumble
1-up, landscape         -1 -r
1-up, landscape, long edge binding -1 -r -sduplex
1-up, landscape, short edge binding -1 -r -stumble

Further options can be found on the a2ps manpage (man a2ps)

sleet% shazam
```

**Step 11:** Command SHAZAM to read your data file by typing “read  
(filename.txt) variable 1 variable 2 variable 3

*Example: read (data.txt) year consume income price*



```
Telnet sleet
Further options can be found on the a2ps manpage (man a2ps)

sleet% shazam
*****
* SHAZAM - FOR SPARCSTATION SITE NO. 444 *
* * * Copyright (C) 2000 by K.J. White - All Rights Reserved * * *
* * * FOR USE ONLY BY: Department of Economics *
* * * AT: Lakehead University *
* * * If this does not describe you then you have stolen this copy *
* * * and if you type anything except STOP or HELP SHAZAM you *
* * * agree to send payment within 7 days for a software license *
* * * *
* * * SITE LICENSE - FOR USE ON ALL COMPUTERS AT ABOVE LOCATION *
*****
Hello/Bonjour/Aloha/Howdy/G Day/Kia Ora/Konnichiwa/Buenos Dias/Nee Hau/Giao
Welcome to SHAZAM - Version 9.0 - APR 2002 SYSTEM=SUNSPARC PAR= 234
TYPE COMMAND
:_read <data.txt> year cpi int income
```