



Lakehead
UNIVERSITY

2019

ACTIVITY REPORT

Faculty of Health and Behavioural Sciences





CONTENTS

- 3. Message from the Dean
- 4. About the Health and Behavioural Sciences
- 5. At-A-Glance
- 6. Directors and Chairs
- 8. Student Enrollment
- 9. Conference Presentations
- 10. Journal Articles
- 15. Books and Book Chapters
- 17. Awarded Grants
- 26. Research Centres
- 27. Contact Us

A MESSAGE FROM THE DEAN.

The Faculty of Health and Behavioural Sciences (FHBS) is a dynamic environment where students, staff, and faculty members can thrive and play a significant part towards better health and well-being for all. Whether it is through teaching and mentoring, research, or collaborating with our numerous community partners, members of FHBS seek to contribute in ways that will ultimately lead to tangible improvements in our communities. As evidenced in this activity report, our people are fully engaged towards this goal. In addition, our people also contribute economically to our communities by bringing in considerable amounts of external research funds. I hope you will enjoy reading this activity report – we certainly enjoyed compiling it - and I congratulate our people for their accomplishments.



Dr. Michel Bédard

Dean of the Faculty of Health and Behavioural Sciences



Dr. Michel Bédard is the Dean of the Faculty of Health and Behavioural Sciences. He is a Professor in the Department of Health Sciences, a Professor with the Northern Ontario School of Medicine, and an Adjunct Professor in the Department of Psychology. He is also the Director of the Centre for Research on Safe Driving, and the Scientific Director, Centre for Applied Health Research, St. Joseph's Care Group.

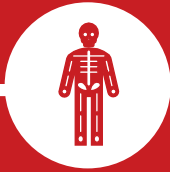
The Faculty of Health and Behavioural Sciences is comprised of several departments and schools, all of which share a dedication to human health and well-being. As such, our students have the opportunity to study multiple dimensions of health: a broad area of study and practice that is relevant to every single individual.

It is our goal to offer educational programming and inspire innovative research that will meet the ever changing demands of the Canadian health care sector, with special emphasis and sensitivity to rural, remote, Indigenous and northern health issues.

Faculty of Health and Behavioural Sciences (FHBS)



Department of Health Sciences



School of Kinesiology



School of Nursing



Department of Psychology



School of Social Work





AT-A-GLANCE

Our Students



1841

Total Students in the Faculty of Health and Behavioural Sciences.

Our Faculty and Staff



76

Full time faculty, administrative, and technical staff in the Faculty of Health and Behavioural Sciences.

Our Scholarly Contributions



110

Journal articles, books, and book chapters, within the Faculty of Health and Behavioural Sciences

Our Grants Awarded



\$10M

Dollars awarded in competitive external grants to the Faculty of Health and Behavioural Sciences.

Our Community Partnerships



71

Community partnerships have been made.

Our Teaching

173

Undergraduate Courses

100

Graduate Courses



Dr. Beth Visser (Psychology), Dr. Kristen Jones-Bonofiglio (Nursing), and Dr. Aislin Mushquash (Psychology) received Contribution to Teaching Awards.

DIRECTORS AND CHAIRS



**Dr. Rebecca Schiff –
Acting Chair of the
Department of Health
Sciences**



**Dr. Ian Newhouse –
Director of the School of
Kinesiology**



**Dr. Karen McQueen–
Director of the School of
Nursing**

In September 2018, we welcomed 57 new graduate students to our Master of Public Health and Master of Health Sciences programs, along with 158 returning students. Our faculty members enjoyed a number of successes over the course of the academic year. Most notably, two of our valued colleagues, Drs. Lindsay Galway and Charles Levkoe were tenured and promoted to Associate Professor. Dr. Levkoe also received a Merit Award in Research and Other Scholarly and Creative Activity, and Dr. Galway was the recipient of a Lakehead University Contributions to Research Award, as well as the recipient of the September 2018 Atlas Award for her research publication on Deforestation and child diet diversity: a geospatial analysis of 15 sub-saharan African countries. Dr. Rebecca Schiff was interviewed twice by CBC - once related to her work on food in remote and northern communities, and once for her work on student homelessness in Canada. Dr. Elaine Wiersma launched the Dementia Café "A place to belong" in Thunder Bay - a partnership between the university's Centre for Education and Research on Aging and Health (for which she is the Director) and the Urban Abbey. The Dementia Café provides a safe environment for people living with dementia to come together with friends and family to enjoy good music, food, and conversation. Dr. Vicki Kristman also established the Research Institute for Enhancing Prevention of Injury and Disability at Work (EPID @work) - which aims to reduce the impact of work-related disability and injury through partnerships, research, and education. Dr. Moller participated in the Parliamentary Health Research Caucus Reception event on Northern and Rural Health Research in Canada, on Parliament Hill in Ottawa. These are just a few activities that demonstrate the various successes and activities of our faculty members - there are certainly others! We also welcomed external reviewers as part of the cyclical program review for undergraduate Gerontology programs and the graduate level Specialization in Gerontology, and submitted a proposal for a PhD program in Health Sciences. It has been an exciting year

This was a productive year for the School of Kinesiology! Notable achievements included the following:

Many hours were invested towards the development of our IQAP review document (scheduled for November, 2019). Preparations for our CCUPEKA accreditation were also initiated (scheduled for Winter, 2020).

A number of initiatives were undertaken in service of recruitment and provision of options for (prospective) students.

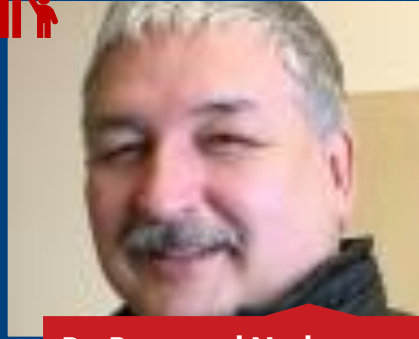
- At the undergraduate level, a Bachelor of Kinesiology stream was developed. This will provide a viable contingency for students unable to complete their honours degree.
- To encourage college graduates to pursue a degree in kinesiology by clearly outlining transferable credits, a dedicated team worked to develop 11 new transfer pathways which have now received Senate approval. Our partner colleges include Georgian, Canadore, Sault, Cambrian, and Boréal.
- At the graduate level, a course-based MSc option is in development. This applied 18-month program will mirror our existing professional diploma program offering with an additional research-oriented component.

Over the summer, we said goodbye to our Diploma in Professional Kinesiology Program Coordinator, Brooke Moncrief, and welcomed Erin Sargent to the role. An alumni of Lakehead with expertise in exercise science and sport physiology, Erin brings a wealth of knowledge in the areas of curriculum development and program management.

Faculty and staff in the School of Nursing were pleased to welcome Dr. Idevania Costa in 2018 and Jamie Dicastmirro and Sharon Goertzen in 2019. Dr. Karen McQueen took on the Director role on July 1st when Dr. Glenna Knutson retired after 39 years of service with Lakehead University. The School of Nursing continues to attract a diverse student group into the 2 nursing program streams. The 3-year Compressed BScN Program and 4-year Collaborative BScN Program with Confederation College comprise over 700 students. We are excited about the new activities in the School of Nursing including preparation for the All Nations Nursing Entry Program with Seven Generations Education Institute and a 4th intake of the Community based BScN Program in Collaborative with Confederation College, both for the fall of 2019. The proposed Master of Nursing Program has been submitted for review with the goal of the first intake in 2020.



**Dr. Mirella Stroink –
Chair of the Department
of Psychology**



**Dr. Raymond Neckoway
– Director of the School
of Social Work**

In 2018-19 the Department of Psychology underwent its 7-year cyclical program review, capping off a 2-year process of updating and strengthening its undergraduate curriculum. We are excited to provide students with a stronger foundation in the core areas of the discipline while providing more flexibility for advanced course options. Our PhD program in Clinical Psychology received a 6-year period of accreditation by the Canadian Psychological Association. We created a new Program Coordinator staff position that features a focus on student success and were excited to hire Jennifer Liscomb to the position. Dr. Chris Mushquash's Canada Research Chair in Indigenous Mental Health was renewed, and he was hired as the Associate Vice President of Research and Chief Scientist at the Thunder Bay Regional Health Sciences Centre. Dr. Beth Visser received tenure and promotion to the rank of Associate Professor, Dr. Beth Visser and Dr. Aislin Mushquash both received Contribution to Teaching Awards, and Dr. Kirsten Oinonen and Dr. Amanda Maranzan both earned Merit awards. Dr. Maranzan became the new Director of the Clinical Programs in July of 2018, as Dr. Oinonen stepped out of that position after 7 years of service to the Clinical programs. We were pleased to welcome Dr. Alex Drawson and Dr. Taslim Alani as external Adjunct faculty. Finally, our three student associations (Psychology Association of Lakehead Students, Neuroscience Research Interest Group, and Psi Chi) hosted several interesting talks and networking events throughout the year.

The School of Social Work offers two different Honours Bachelor's degree (HBSW) programs and a Master of Social Work (MSW) degree program at both Thunder Bay and Orillia campuses. The four-year HBSW program is designed to combine a liberal arts education with a professional education. The One-Year HBSW program is designed for those students who have completed the requirements of an approved Bachelor's degree other than social work and have related practice experience. All programs are fully accredited by the Canadian Association of Social Work Education. In 2018-19 academic year, the School also successfully went through IQAP re-accreditation. The School has 15 full-time faculty members (8 in Thunder Bay, 7 in Orillia) who are actively engaged in research and community work. Dr. Raymond Neckoway completed his term as Director of the School of Social work during this period, and Dr. Natalya Timoshkina became the Director on July 1.

STUDENT ENROLLMENT

1841

Total Students

1666

Thunder Bay Campus

175

Orillia Campus

1409

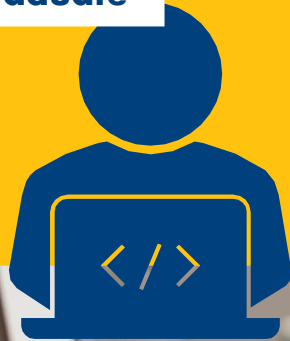
Undergraduate

257

Graduate

175

Undergraduate



PEER-REVIEWED CONFERENCE PRESENTATIONS: NATIONAL AND INTERNATIONAL IMPACT

231

Presentations





PUBLICATIONS

JOURNAL ARTICLES

- Abdulahad, R., Brownlee, K., John R. Graham, J. R. & Montelpare, W. J. (2018). Measuring Social Capital: An Adaptation and Translation into Arabic of the Onyx and Bullen Social Capital Scale for Iraqi-Canadians. *Australian Social Work*, 71(4), 462-477.
- Akesson, B., Bogossian, A., Gokani, R. (2018). A model of paternal protection in the context of political violence. *International Social Work*. <https://doi.org/10.1177/0020872818798438>
- Alzghoul, M. M., & Spadoni, M. (2019). Reflecting on – Traditions, Ceremony, and the Formation of Bachelor-Prepared Nurses. *Journal of Reflective Practice*. 20 (2), 279-288. <https://doi.org/10.1080/14623943.2019.1588719>.
- Armstrong, D. P., Sinden K. E., Sendsen, J., MacPhee R. S., & Fischer S. L. Evaluating the effect of a strength and conditioning program to improve paramedic candidates physical readiness for duty. 2019. *Work*. (DOI 10.3233)
- Armstrong, D. P., Sinden K. E., Sendsen J., MacPhee R. S., & Fischer S. L. The Ottawa Paramedic Physical Ability Test: test-retest reliability and analysis of sex-based performing differences. 2019. *Ergonomics*. May 26:1-10.
- Ayan, S., Dunphy, K., & Zerpa, C. (2019). Investigation of vibration data-based walking pattern of pedestrians. *Structural Health Monitoring*. <https://doi.org/10.1177/1475921719836254>
- Boulé, J., Wilson, K., Kortess-Miller, K., & Stinchcombe, A. (2019). "We Live in a Wonderful Country, Canada, but...": Perspectives From Older LGBTQ Ontarians on Visibility, Connection, and Power in Care and Community. *The International Journal of Aging and Human Development*, 0091415019857060.
- Breslau, J., Sorbero, M.J., Kusuke, D., Yu, H., Scharf, D. M., Hackbarth, N. S., & Pincus, H. A. (2019, March). *Primary and Behavioural Health Care Integration Program: Impacts on health care utilization, cost and quality* (Research Report No. RR-1601-ASPEC). Prepared for the U.S. Department of Health and Human Services.
- Barss, T., Klarner, T., Pearcy, G., Sun, Y., & Zehr, E.P. (2018) Time course 'dose' of inter-limb strength transfer after handgrip training. *Journal of Applied Physiology*, 125(5):1594-1608.
- Buccieri, K., Oudshoorn, A., Abramovich, A., Schiff, R., Frederick, T., Forchuk, C., & Gaetz, S. (2018). Hospital discharge planning for Canadians experiencing homelessness. *Housing Care and Support*. <https://doi.org/10.1108/HCS-07-2018-0015>
- Cane, D., Nielson, W., & Mazmanian, D. Patterns of pain-related activity: Replicability, treatment-related changes and relationship to functioning. *Pain*, 159(12), 2522-2529.
- Carfi, A., Vetrano, D. L., Mascia, D., Meloni, E., Villani, E. R., Acampora, N., Brandi, V., Fries, B., Martin, L., Bernabei, R., & Onder, G. (2019). Adults with Down syndrome: a comprehensive approach to manage complexity. *Journal of Intellectual Disability Research*, 63(6), 624-629.
- Carlson, S., Zerpa, C., Przyucha, E. P., & Sanzo, P. (2019). Mitigation of linear accelerations and shear forces during drop head simulated falls. *International Journal of Extreme Automation and Connectivity in Healthcare*, 1 (2), 38-55.
- Carter, S. L., & Newhouse, I. (2019) "Agreement among Six Methods of Predicting the Anaerobic Lactate Threshold in Elite Cross-Country Skiers," *International Journal of Exercise Science: Vol. 12: Iss. 2, Pages 155 - 172*.
- Costa, I. G. (2018). Challenge in practice - venous leg ulcer management: A case study demonstrating the role of the wound care nurse in a developing country. *WCET Journal*, 38(4), 28-34.
- Costa, I. G., Plazas.M. P.C., & Tregunno. D. et al., (2018). The journey toward engagement in self-care management of diabetic foot ulcer: A constructivist grounded. *Notes on Nursing scholarship*, 1 (3), 7.
- Davis, A. C., Arnocky, S., & Stroink, M. L. (2019). The Problem of overpopulation: Proenvironmental concerns and behavior predict reproductive attitudes. *Ecopsychology*. <https://doi.org/10.1089/eco.2018.0068>
- Dickerson AE, Molnar LJ, Bédard M, Eby DW, Berg-Weger M, Choi M, Grigg J, Horowitzk A, Meuser T, Myers A, O'Connor M, Silverstein NM. Transportation and aging: An updated research agenda for advancing safe mobility among older adults transitioning from driving to non-driving. *The Gerontologist* 2019; 59:215-221.
- Djimetio, J. N., Antoniou, T., Kristman, V., Schiff, R., Gmable, M., Kennedy, L., Yudin, M., & Loutfy, M. Understanding the fertility desires and intentions among HIV-positive men living in Ontario: Survey instrument development and validation. *Journal of the International Association of Providers of AIDS Care*. 2019;18:1-8.
- Dubois, S., Mushquash, A. R., Weaver, B., & Bedard, M. (2018). Age modifies the association between driver's body mass index and death following motor vehicle crashes. *Traffic Injury Prevention*, 19, 728-733.
- Duncan, J., Levkoe, C. Z., & Moragues-Faus, A. (2019). Envisioning New Horizons for the Political Economy of Sustainable Food Systems. *IDS Bulletin*, 50(2). doi: 10.19088/1968-2019.117

- Fox, M. T., Sidani, S., Butler, J. I., Skinner, M. W., & Alzghoul, M. M. (2019). Adapting Hospital-to-Home Transitional Care Interventions to the Rural Healthcare Context in Ontario, Canada: Protocol of a multi-method descriptive study. *BMJ open*, 9(5), e028050.
- Gagnon S, Stinchcombe A, Curtis M, Kateb M, Polgar J, Porter MM, Bédard M. Older drivers' safety improves after individualized training: An RCT involving older drivers in an urban area. *Traffic Injury Prevention* 2019; 20:595-600.
- George, E., & Hovey, A. (2019). Deciphering the trigger warning debate: A qualitative analysis of online comments. *Teaching in Higher Education*. (online version) doi:10.1080/13562517.2019.1603142
- Gignac, M. A. M., Ibrahim, S., Smith, P. M., Kristman, V., Beaton, D. E., & Mustard C. A. The role of sex, gender, health factors and job context in workplace accommodation use among men and women with arthritis. *Annals of Work Exposure and Health*. 2018;62(4):490-504.
- Gignac, M. A. M., Kristman, V. L., Smith, P. Beaton, D., Badley, E. M., Ibrahim, S., & Mustard C. Are there differences in workplace accommodations in needs, use and unmet needs among older workers with arthritis, diabetes and no chronic conditions? Examining the role of health and work context. *Work, Aging, and Retirement*. 2018;4(4):381-98. (Open access: <https://academic.oup.com/workar/article/4/4/381/4975979?guestAccessKey=4c5bf7d3-78de-492e-a0f8-97f88e44d3f2>)
- Gignac, M. A. M., Smith, R., Ibrahim, S., Kristman, V. L., Beaton, D., & Mustard, C. Retirement expectations of older workers with arthritis and diabetes compared with those with no chronic diseases. *Canadian Journal on Aging*. 2019:1-19. doi:10.1017/S071498000685. (Open access: <https://www.cambridge.org/core/journals/canadian-journal-on-aging-larvue-canadiennedu-vieillessement/article/retirement-expectations-of-older-workers-with-arthritis-and-diabetescompared-with-those-of-workers-with-no-chronicdiseases/6B0F0EADABFD626540FE40206B70ABEC>)
- Goemans, M., Levkoe C.Z., Changfoot, N., & Andrée, P. (2018). Learning to "Walk the Talk": Reflexive Evaluation in Community-First Engaged Research. *Engaged Scholar Journal: Community-Engaged Research, Teaching, and Learning*, 4(2), 61-84.
- Gooden JR, Ponsford J, Charlton JL, Ross P, Marshall S, Gagnon S, Bédard M, Stolwyk R. Self-regulation upon return to driving after traumatic brain injury. *Neuropsychological Rehabilitation* 2019; 29:92-106.
- Harvey, J., Pearson, E. S., Mantler, T., & Gotwals, J. (2018). "Be kind to yourself - because you're doing fine." Using self-determination theory to explore the health-related experiences of primiparous women participating in a Co-Active Life Coaching Intervention. *Coaching: An International Journal of Theory, Research and Practice*. doi:10.1080/17521882.2018.1545137
- Hasler, B. P., Bruce, S., Scharf, D., Ngari, W., & Clark, D. B. (2019). Circadian misalignment and weekend alcohol use in late adolescent drinkers: preliminary evidence. *Chronobiology International*, 36(6), 796-810. doi: 10.1080/07420528.2019.1586720. Epub 2019 Apr 5.
- Henderson, Z. J., Sanzo, P., Zerpa, C., & Kivi, D. (2019). Ankle bracing's effects on lower extremity iEMG activity, force production, and jump height during a vertical jump test: An exploratory study. *Physical Therapy in Sport*, 37, 171-178.
- Henderson, Z.J., Sanzo, P., Zerpa, C., & Kivi, D. (2019). The effects of ankle braces on lower extremity electromyography and performance during vertical jumping: a pilot study. *International Journal of Exercise Science*, 12(1), 15-23.
- Hovey, A., Roberts, C., Scott, S., & Chambers, L. (2019). Understanding the landscape of substance use management practices in domestic violence shelters across Ontario. *Journal of Family Violence*. (online version) <https://doi.org/10.1007/s10896-019-00056-0>
- Hua P, Charlton JL, Ponsford JL, Gooden JR, Ross PE, Bédard M, Marshall S, Gagnon S, Stolwyk RJ. Using naturalistic methods to examine real-world driving behavior in individuals with TBI upon return to driving: A pilot study. *Journal of Head Trauma and Rehabilitation* 2019; 34:E55-E60.
- Isaac, M., Isakson, R., Dale, B., Levkoe, C.Z., Hargreaves, S.K., Méndez, V.E., Wittman, H., Hammelman, C., Langill, J.C., Martin, A.R., Nelson, E., Ekers, M., Borden, K.A., Gagliardi, S., Buchanan, S., Archibald, S., & Ciani, A.G. (2018). Agroecology in Canada: Towards an Integrated Practice of Agroecological Science, Movement and Practice. *Sustainability, Special Issue on Agroecology for the Transition Towards Social-Ecological Sustainability*, 10(3299).
- Isvins, A., Pauly, B., Brown, M., Evans, J., Gray, E., Schiff, R., Krysovaty, B., Vallance, K., & Stockwell, T. (2019) The black sheep of harm reduction: finding a place for managed alcohol programs in the harm reduction movement. *International Journal of Drug Policy*. 67.
- Karki, K. K., Chi, M., Gokani, R., Grosset, C., Vasic, J., & Kumsa, M. K. (2018). Entering precarious job markets in the era of austerity measures: the perceptions of Master of Social Work students. *Critical and Radical Social Work*, 6(3), 291–310. doi: 10.1332/204986018x15388224539606
- Karmali, S., Ng, V., Battram, D., Burke, S., Morrow, D., Pearson, E. S., Tucker, P., Mantler, T, Cramp, A., Petrella, R. & Irwin, J. D. (2019). Coaching and/or education intervention for parents with overweight/obesity and their children: Study protocol of a single-centre randomized controlled trial. *BMC Public Health*, 19, 345.

- Kelley, M. L., Prince, H., Nadin, S., Brazil, K., Crow, M., Hanson, G., Maki, L., Mushquash, C. J., O'Brien, V., & Smith, J. (2018). Developing palliative care programs in Indigenous communities using participatory action research: a Canadian application of the public health approach to palliative care. *Annals of Palliative Medicine*, 7, S52-S72. Doi: 10.21037/apm.2018.03.06
- Kepkiewicz, L., Levkoe C.Z., & Brynne, A. (2018). Community First for Whom? Reflections on Positionality and the Possibilities and Challenges of Community-Campus Engagement from the Food Sovereignty Hub. *Engaged Scholar Journal: Community-Engaged Research, Teaching, and Learning*, 4(2), 43-60.
- Klarner, T., & Zehr, E. P. (2018). Sherlock Holmes and the curious case of the human locomotor central pattern generator. *Journal of Neurophysiology*, 120(1):53-77.
- Koppel S, Stephens AN, Bédard M, Charlton JL, Darzins P, Di Stefano M, Gagnon S, Gélinas I, MacLeay L, Man-Son-Hing M, Mazer B, Myers A, Naglie G, Odell M, Porter MM, Rapoport MJ, Stichcombe A, Tuokko H, Vrkljan B, Marshall S. Self-reported violations, errors and lapses for older drivers: Measuring the change in frequency of aberrant driving behaviours across a five-year period. *Accident Analysis and Prevention* 2019; 123:132-139.
- Kortes-Miller, K., Boulé, J., Wilson, K., & Stinchcombe, A. (2018). Dying in long-term care: Perspectives from sexual and gender minority older adults about their fears and hopes for end of life. *Journal of social work in end-of-life & palliative care*, 1-16.
- Kortes-Miller, K., Wilson, K., & Stinchcombe, A. (2019). Care and LGBT Aging in Canada: A Focus Group Study on the Educational Gaps among Care Workers. *Clinical Gerontologist*, 42(2), 192-197.
- Kristman, V. L., Lowey, J., Fraser, L. The Superior Mental Wellness @ Work Community Intervention. *Journal of the Ontario Occupational Health Nurses Association*, 2019;38(1): 16-19.
- Kristman, V. L., Lowey, J., Fraser, L., Armstrong, S., & Sawula, S. A multi-dimensional community intervention is associated with knowledge and standards of workplace mental health: The Superior Mental Wellness @ Work Study. *BMC Public Health*. 2019; 19:638. (Open access: <https://bmcpublihealth.biomedcentral.com/articles/10.1186/s12889-01906976-x>)
- Kuchta, K., Potter, S., Brousseau, H., & Newhouse, I. (2018) "The Effect of Active Ankle T1TM Ankle Braces on the Timing of Muscular Activation in the Leg in Female Varsity Volleyball Players: A Pilot Study," *International Journal of Exercise Science: Vol. 11: Iss. 1, Pages 1086 - 1095.*
- LaForge, J., & Levkoe C.Z. (2018). Seeding Agroecology through New Farmer Training in Canada: Knowledge, Practice, and Relational Identities. *Local Environment*, 23(10), 991-1007.
- Levkoe C.Z., & Blay-Palmer, A. (2018). Food Counts: Food Systems Report Cards, Food Sovereignty and the Politics of Indicators. *Canadian Food Studies / La Revue Canadienne des études sur l'alimentation, Special Issue Building an Integrated National Food Policy for Canada* 5(3), 49-75.
- Levkoe C.Z., Brem-Wilson, J., & Anderson, C. (2018). People, Power, Change: Three Pillars of a Food Sovereignty Research Praxis. *Journal of Peasant Studies*.
- Levkoe C.Z., Erlich, S., & Archibald, S. (2019). Campus Food Movements and Food System Transformation: Mobilizing Community-Campus Partnerships for the Real Food Challenge in Canada. *Engaged Scholar Journal: Community-Engaged Research, Teaching, and Learning*, 5(1): 57-76.
- Levkoe C.Z., Ray, L., and McLaughlin, J. (2019). The Indigenous Food Circle: Reconciliation and Revitalization through Food in Northwestern Ontario. *Journal of Agriculture, Food Systems and Community Development*.
- Levkoe, C. Z., Schembri, V., & Wilson, A. D. (2018). Community-Academic Peer Review: Prospects for Strengthening Community-Campus Engagement and Enriching Scholarship. *Engaged Scholar Journal: Community-Engaged Research, Teaching, and Learning*, 4(2), 1-20.
- Levkoe C.Z., & Sheedy, A. (2019). A People-Centred Approach to Food Policy Making: Lessons from Canada's People's Food Policy Project. *Journal of Hunger and Environmental Nutrition*, 14(3), 318-338.
- MacDermid J. C., Nazari G., Rashid C., Sinden K., Carelton N., & Cramm H. Two-month point prevalence of exposure to critical incidents in firefighters in a single fire service. 2019. *Work*; 62(3):477-483.
- Maranzan, K. A., Hudson, R., Scofich, R., McGregor, M., & Seguin, R. (2018). "It's a lot of work and I'm still doing it": Indigenous perceptions of help after sexual abuse and sexual violence. *International Journal of Indigenous Health*, 13(1), 140-156. DOI: <https://doi.org/10.18357/ijih.v13i1.30312>
- Maranzan, K. A., Kowatch, K. R., Mascioli, B. A., McGeown, L., Popowich, A. D., & Spiroiu, F. (2018). Self-care and the Canadian Code of Ethics: Implications for training in professional psychology. *Canadian Psychology/Psychologie Canadienne*, 59(4), 361-368. DOI: <http://dx.doi.org/10.1037/cap0000153>
- Mascioli, B. A., & Davis, R. (2018). Reward responsiveness moderates disordered eater's implicit attitude toward the caloric value of food. *Psi Chi Journal of Psychological Research*, 23, 219-226. <https://doi.org/10.24839/2325-7342.JN23.3.219>
- McGeown, J., Zerpa, C., Lees, S., Niccoli, S., & Sanzo, P. (2018). Implementing a structured exercise program for persistent concussion symptoms: A pilot study on the effects on salivary brain-derived neurotrophic factor, cognition, static balance, and symptom scores. *Brain Injury*, <https://doi.org/10.1080/02699052.2018.1498128>
- McGuire C, Kristman VL, Martin L, Bédard M. The association between depression and traumatic brain injury in older adults: A nested matched case control study. *Journal of Aging and Health* 2018; 30:1156-1168.

- McQueen, K. (2018). "Rooming-in" could be an effective non-pharmacological treatment for infants with neonatal abstinence syndrome. *Evidence Based Nursing*, doi:10.1136/eg-2018-102948. Commentary on: MacMillan, KDL. et al. Association of rooming-in with outcomes for neonatal abstinence syndrome: A systematic review with met-analysis. *JAMA Pediatrics*. 2018; 172: 3345-351.
- McQueen, K., Taylor, C., & Murphy-Oikonen, J. (2019) Systematic review of newborn feeding outcomes related to neonatal abstinence syndrome. *Journal of Obstetrics, Gynecology and Neonatal Nursing*, 48 (4), 398-407. DOI: 10.1016/j.jogn.2019.03.004
- Moulton, E., Wilson, R., Camargo Plazas, P., & Halverson, K. (2019). The central question and the scope of nursing research. *Nursing Philosophy*, 20(1), e12228-n/a. doi:10.1111/nup.12228
- Mushquash, A. R., Rashquinha, A. M., Friedman, A., & Ball, G. D. C. (2018). Examining the accuracy and use of portion size estimation aids in parents of children with obesity: A randomized controlled trial. *Journal of Nutrition Education and Behavior*, 50, 918-923.
- Nazari G., MacDermid J., Sinden K., Richardson J., & Tang A.. Inter-instrument reliability and agreement of Fitbit Charge Measures of Heart Rate and Activity at Rest, During the Modified Canadian Aerobic Fitness Test and Recovery. *Physiotherapy Canada*.
- Nguemo Djimetio, J., Antoniou, T., Kristman, V., Schiff, R., Gamble, L. K., Yudin, M., & Loutfy, M. (2019) Understanding the fertility desires and intentions among HIV-positive men living in Ontario: Survey instrument development and validation. *Journal of the International Association of Providers of AIDS Care*. 18(1).
- Nolet, P. S., Emary, P. C., Kristman, V. L., Murnaghan, K., Zeegers, M. P. & Freeman, M. D. Exposure to a motor vehicle collision and the risk of future neck pain: a systematic review and meta-analysis. *Physical Medicine and Rehabilitation*, 2019;1-12. (<https://doi.org/10.1002/pmrj.12173>)
- Oullette-Kunts, H., Stankjewica, E., McIsaac, M., & Martin, L. (2018). Improving prediction of risk of admission to long-term care or morality among home care users with intellectual and developmental disabilities. *Canadian Geriatrics Journal* 21(4), 303-306.
- Oullette-Kuntz, H., Martin, L., Burke, E., McCallion, P., McCarron, M., McGlinchey, E., Sandbert, M., Schoufour, J., Shoostari, S., & Temple, B. (2019). How best to support individuals with IDD as they become frail: development of a consensus statement. *Journal of Applied Research in Intellectual Disabilities*, 32, 35-42.
- Palmer, A. & Murphy-Oikonen, J. (2019). Social Work Intervention for Women Experiencing Early Pregnancy Loss in the Emergency Department. *Social Work in Health Care*, 1-20. doi: 10.1080/00981389.2019.1580237
- Patterson L, Mullen N, Stinchcombe A, Weaver B, Bédard M. Measuring the impact of driving status: The Centre for Research on Safe Driving–Impact of Driving Status on Quality of Life (CRSD-IDSQoL) tool. *Canadian Journal of Occupational Therapy* 2019; 86:30-39.
- Pauly, B., Vallance, K., Wettlaufer, A, Chow, C., Brown, R., Evans, J., Gray, E., Kryswaty, B., Isvins, A., Schiff, R., & Stockwell, T. (2018) Rethinking Alcohol Harm Reduction: Overview of Managed Alcohol Programs (MAPs) in Canada. *Drug and Alcohol Review*. 37 (Suppl. 1), S132–S139
- Person, B., & Oinonen, K. A. (2019). Emotional Memory in Oral Contraceptive Users: Negative Stimuli Are More Forgettable. *Psychological Reports*, 003329411985655. doi: 10.1177/0033294119856554
- Pope, C., Sharma, V., Sommerdyk, C., & Mazmanian, D. (2018) Antidepressants and the recurrence of depression in the postpartum period. *Archives of Women's Mental Health* 21, 821-828.
- Rawana, E., Stargratt, D., & Person, B. (2018) A strength-based approach to education. *Principal Connections: The magazine of Catholic Principals' Council | Ontario*, Winter 2018, Volume 22, Issue 2, 56-57.
- Reilly, K. C., Burke, S. M., Tucker, T., Irwin, J. D., Johnson, A. M., Pearson, E. S., & Bock, D. (2018). "C.H.A.M.P. Families": Protocol and theoretical foundations for a paediatric obesity intervention targeting parents – a single-centre non-randomized prospective feasibility study. *International Journal of Environmental Research and Public Health*, 15, 2858.
- Reilly, K. C., Briatico, D., Irwin, J. D., Tucker, P., Pearson E. S., & Burke, S. M. (2019). Participants' perceptions of "C.H.A.M.P. Families": A parent-focused intervention targeting paediatric overweight and obesity. *International Journal of Environmental Research and Public Health*, 16, 2171.
- Riendeau J, Stinchcombe A, Weaver B, Bédard M. Personality factors are associated with simulated driving outcomes across the driving lifespan. *Transportation Research Part F: Traffic Psychology and Behaviour* 2018; 54: 171-187.
- Rye, B. J., Hovey, A., & Waye, L. (2018). Evaluation of a restorative justice-based, community-based program for people who have offended sexually: Participant impact. *Contemporary Justice Review: Issues in Criminal, Social, and Restorative Justice*. doi:10.1080/10282580.2018.1494373
- Sawula E, Polgar J, Porter MM, Gagnon S, Weaver B, Nakagawa S, Stinchcombe A, Bédard M. The combined effects of on-road and simulator training with feedback on older drivers' on-road performance: Evidence from a randomized-controlled trial. *Traffic Injury Prevention* 2018; 19:241-249.
- Shadel, W. G., Martino, S. C., Setodji, C. M. Dunbar, M., Scharf, D., & Creswell, K. G. (2019). Do graphic health warning labels on cigarette packages deter purchases at point-of-sale? An experiment with adult smokers. *Health Education Research*, 34(3), 321-331. doi: 10.1093/her/cyz011.
- Siedlecki, P., Sanzo, P., Zerpa, C., & Newhouse, I. (2018): End-tidal carbon dioxide levels in patients with post-concussion syndrome during neurocognitive and physical tasks compared to a normative control group, *Brain Injury*, DOI:10.1080/02699052.2018.1506945

- Sinclair, S. M., Schmidt, F., Kowatch, K. R., & Mushquash, C. J. (2019). Mental Health Cross-Informant Agreement for Indigenous and non-Indigenous Adolescents. *Journal of Child and Family Studies*, 28(4), 906–916. doi: 10.1007/s10826-019-01328-5
- Smith, K. J., et al. (2019). "Cerebral Blood Flow during Exercise in Heart Failure: Effect of Ventricular Assist Devices." *Med Sci Sports Exerc* 51(7): 1372-1379.
- Smith, K. J., et al. (2019). "Matched increases in cerebral artery shear stress, irrespective of stimulus, induce similar changes in extra-cranial arterial diameter in humans." *Journal of Cerebral Blood Flow & Metabolism* 39(5): 849-858.
- Smith, K. J., et al. (2019). "Novel Noninvasive Assessment of Microvascular Structure and Function in Humans." *Med Sci Sports Exerc* 51(7): 1558-1565.
- Smith, M., Spadoni, M., & Kioke, S. (2018) Where is cultural safety in education. *Cultural and Pedagogical Inquiry*, 10(2), 84-108.
- Stolwyk RJ, Charlton JL, Ross PE, Bédard, M, Marshall, S, Gagnon S, Gooden JR, Ponsford J. Characterising on-road driving performance in individuals with traumatic brain injury who pass or fail an on-road driving assessment. *Disability and Rehabilitation* 2019; 41:1313-1320.
- Stinchcombe, A., Wilson, K., Kortess-Miller, K., Chambers, L., & Weaver, B. (2018). Physical and mental health inequalities among aging lesbian, gay, and bisexual Canadians: cross-sectional results from the Canadian Longitudinal Study on Aging (CLSA). *Canadian Journal of Public Health*, 109(5-6), 833-844.
- Sukhawathanakul P, Porter MM, Naglie G, Marshall S, Rapoport M, Tuokko H, Vrkljan B, Gélinas I, Mazer B, Bédard M. The effect of fuel prices on the driving patterns of older adults. *Transportation Research Part F: Traffic Psychology and Behaviour* 2018; 56:74-81.
- Thompson, A.P., Thompson D.S., Jou, H., & Vohra, S. (2019). Relaxation training for pediatric headache pain: A rapid review. *Paediatrics and Child Health*, 24(2), 103-114.
- Tippin, G. K. & Maranzan, K. A. (2019). Efficacy of a Photovoice-based video as an online mental illness antistigma intervention and the role of empathy in audience response: A randomized controlled trial. *Journal of Applied Social Psychology*, 49(6), 381-394. DOI 10.1111/jasp.12590
- Wark, J., Neckoway, R., & Brownlee, K. (2019). Interpreting a cultural value: An examination of the Indigenous concept of non-interference. *International Social Work*, 62(1), 419-432.
- Wheeler, M. J., Dunstan, D.W, Smith, B, Smith, K.J et al., (2019). "Morning exercise mitigates the impact of prolonged sitting on cerebral blood flow in older adults." *Journal of Applied Physiology* 126(4): 1049-1055.
- Young, N. L., Wabano, M. J., Dénomée, J., Barbic, S. P., Boydell, K., THavom, K., Roy-Charland, A., Momoli, F., Anderson, M., Trudeau, T., Mushquash, C. J., Szatmari, P., Jacko, D., and Williamson, P. (2018). Community-Based Screening & Triage vs Standard Referral of Aboriginal Children: A Prospective Cohort Study Protocol. *International Journal of Indigenous Health*, 13, 65-86. DOI 10.18357/ijih.v13i1.30282
- Zerpa, C., Sadhu, A., Zammallic, M., & Varga, K. (2019). Evaluation of spring-loaded cane ground reaction forces during walking using time and frequency domain analysis. *Journal of Medical Engineering and Technology*, 42(8), 628-638. <https://doi.org/10.1080/03091902.2019.1595761>

BOOKS AND BOOK CHAPTERS

- Andrée, P. Clark, J.K., Levkoe C.Z., & Lowitt, K. (Eds.). (2019). *Civil Society and Social Movements in Food System Governance*. Routledge, Series on Food, Society and Environment.
- Andrée, P. Clark, J.K., Levkoe, C.Z., & Lowitt, K. (2019). The Social Movement Governance Engagement Continuum. In: Andrée, P. Clark, J.K., Levkoe, C.Z., Lowitt, K. (Eds.). *Civil Society and Social Movements in Food System Governance*. Routledge, Series on Food, Society and Environment.
- Andrée, P. Clark, J.K., Levkoe, C.Z., & Lowitt, K. (2019). Traversing Theory and Practice: Social Movement Engagement in Food Systems Governance for Sustainability, Justice and Democracy. In: Andrée, P. Clark, J.K., Levkoe, C.Z., Lowitt, K. (Eds.). *Civil Society and Social Movements in Food System Governance*. Routledge, Series on Food, Society and Environment.
- Cummings, S., Puiras, E., Dietrich, E., Gutmann, K., Schincariol, E., & Mazmanian, D. (2019). *Online gaming in Northern Ontario: A workbook for youth and young adults*. Thunder Bay, ON: Northern Ontario Gambling Research Hub.
- Fornssler, B., Hall, L., Dell, C., Mushquash, C. J., Duncan, R., Butt, P., Hopkins, C., Poole, N., Menzies, P., Rowan, M., Dell, D., Mykota, D., & Fiedeldey-Van Dijk, C. (2018). Travelling the Möbius Strip: The Influence of Two-Eyed Seeing in the Development of Indigenous Research Accomplices. In R. Henry, A. Lavalee, N. Van Styvendale & R.A. Innes (Eds). *Global Indigenous Health: Reconciling the Past, Engaging the Present, Animating the Future*. USA: Arizona Press.
- Levkoe C.Z., & Wilson, A. (2019). Policy Engagement as Prefiguration: Experiments in Food Policy Governance through the National Food Policy Dialogue in Canada. In: Andrée, P. Clark, J.K., Levkoe, C.Z., Lowitt, K. (Eds.). *Civil Society and Social Movements in Food System Governance*. Routledge, Series on Food, Society and Environment.
- Lowitt, K., Levkoe C.Z., Lauzon, R., Ryan, K. & Seyers, D. (2019). Indigenous Self-Determination and Food Sovereignty through Fisheries Governance in the Great Lakes Region. In: Andrée, P. Clark, J.K., Levkoe C.Z., Lowitt, K. (Eds.). *Civil Society and Social Movements in Food System Governance*. Routledge, Series on Food, Society and Environment.
- Lowitt K., Levkoe C.Z., Song A.M., Hickey G.M., & Nelson C. (2019). Broadening the Knowledge Base of Small-Scale Fisheries through a Food Systems Framework: A Case Study of the Lake Superior Region. In: R. Chuenpagdee, and S. Jentoft. (Eds.). *Transdisciplinarity for Small-Scale Fisheries Governance*. MARE Publication Series. Springer.
- Rawana, E., Person, S., Person, B., Portt, E., & Brownlee, K. (2018). *Engaging Strengths and Culture to Promote Healing: The Strengths Assessment Inventory – Adult Version, Manual in collaboration with Dilico Anishinabek Family Care*, Thunder Bay, ON: Centre of Education and Research on Positive Youth Development, Lakehead University.
- Schiff, R., & Bernard, K. (2018). Food Systems and Indigenous Peoples in Labrador: Issues and New Directions. Invited submission to Food Futures NL. St. John's: Iser Press.
- Stones, M. J., Worobetz, S., Randle, J., Marchese, C., Fossum, S., Ostrom, D., & Brink, P. (2019). Psychotropic Medication Use and Mortality in Long-Term Care Residents. *Aging – Life Span and Life Expectancy*. In Intech Open, *Aging - Life Span and Life Expectancy*. doi: 10.5772/intechopen.85971
- Tan, J. C. H. (2019) Perspectives of psychopathology across culture and among Indigenous societies. In K. Keith (Ed.), *Cross-cultural psychology: Contemporary themes and perspectives* (2nd ed., pp 467-481). Hoboken, NJ: John Wiley & Sons.
- Timoshkina, N. (2019). Health and social service-based human trafficking response models. In J. Winterdyk & J. Jones (eds.), *The Palgrave international handbook of human trafficking*. New York: Palgrave Macmillan. https://doi.org/10.1007/978-3-319-63192_42-1



FUNDING

AWARDED GRANTS

Granting Body	Research Title	Principal Investigator	Co-Investigators	Amount Awarded (indicate proportion if co-awarded)	Date of Grant
CIHR Operating Grant	Developing a Community-Engaged Research Network for Indigenous Mental Health: Priorities, Knowledge Gaps and Engagement Strategies for Future Research	Ansloos, J. Restoule, B. Stewart, S.	Linklater, R. Fellner, K. Graham, H. Harder, H. McCormick, R. Mushquash, C. J. Sinclair, R.	\$75,000	2018-2019
National Health and Medical Research Council (Australia)	Driving Longer and Better: Evidence-based interventions for older drivers	Anstey, K.	Wood J., Delbaere K., Bédard M., Brown J., Kiely K., Clare L., Lung, T.	\$918, 549	January 2019
CIHR Planning and Dissemination Grant	Enhancing Educational Practices to Promote Holistic, Culturally Safe, and Equitable Care: Developing a Research Agenda Through a Community of Practice	Cameron, E. Maar, M. McGregor, L. Mushquash, C. J. Spadoni, M.	Urajnik, D.	\$20,000	2018-2019
Public Health Agency of Canada	Empowering the next generation of health care professionals with knowledge, skills, tools, and supports to address infectious diseases related to climate change in Canada Awarded to CASN/CHNEIG		Filice, S. Member of steering committee for CASN CHNEIG to direct literature review, content, stakeholder consultations with health care professionals, review of guidelines, etc..	\$496,243	2018
Canadian Institutes of Health Research	Red Light, Yellow Light Green Light, Go! Stratifying Risk of Post-Traumatic Stress in Northern Ontario Fire Services		Gotwals, J. K. (COI) Sinden, K. E. (COI) Smith, K. J. (COI) Kortes-Miller, K. (COI)	\$26,032	May 2019
Associated Medical Services Phoenix Foundation	Cultural Safety and TRC in Health Care Education	Helmer, J (Indigenous Scholar)	Briggs, M. (NOSM) Spadoni, M.	\$100,000	August 2018 – November 2019

Ontario Association of Interval and Transition Housing	<i>Creating a harm reduction framework</i>	Hovey, A.	Scott, S. Chambers, L.	\$8,500	January 2019
AMS Phoenix Fellowship (Year Two)	Self-compassion as the foundation for well-being & compassionate care	Jones-Bonofiglio, K.		\$25,000 (+ \$25,000 matched funding)	October 2018 – October 2019,
CIHR Project Grant	“Improving palliative care in the home and community: Building CAPACITI(Community Access to Palliative Care via Interprofessional primary care Teams Intervention)”		Kortes-Miller, K.	\$1,216,350	January 2019
Health Canada	Palliative Care Training for First Nations Communities: A Proposal to Support Capacity Development for Palliative Care Services in the Manitoba Region.		Kortes-Miller, K.	\$290,467	March 2019
SSHRC Partnership Development Grant	Deconstructing normativity in gerontology: Focus on sexual orientation & gender identity		Kortes-Miller, K.	\$182,440	April 2019
CIHR Planning and Dissemination Grant	Engaging the next generation of health scientists in big data research at the 2018 National Student Conference of the Canadian Society for Epidemiology and Biostatistics	Kristman, V. L.		\$10,000	October 2018 – April 2019
Workers Compensation Board of Manitoba, Scientific Research Application	Workplace, supervisor, worker and accommodation factors associated with workers’ compensation outcomes: An Ecologic study	Kristman, V. L.		\$177,600	April 2019 – March 2021

Northern Ontario Heritage Fund Corporation Awarded by the Ministry of Northern Development and Mines	Regional Centres and the Sustainability of Canada's Rural and Northern Landscaped	Galway, L. Levkoe, C. Z. Schiff, R.		\$10,962	2018
On the Horizon Grant Awarded by the University of Minnesota	Solastalgia: Investigating the Nexus of Climate Change, Place, and Human Well-Being	Beery, T. Levkoe, C. Z.		\$14,693	2018
Awarded by the Department of Indian Affairs and Northern Development - National Indigenous Economic Development Board	Sustainable Northern Food Systems Study	Levkoe, C. Z.		\$75,000	2018
Northern Fruit and Vegetable Program Enhancement Project Awarded by the Thunder Bay District Health Unit	Understanding Our Food Systems Phase Two	Levkoe, C. Z.		\$200,504	2018-2019
Connections Grant Awarded by Social Science and Humanities Research Council	Lakehead University Community Connections Showcase	Sameshima, P.	Levkoe, C. Z.	\$10,600	2018-2019
Connections Grant Awarded by Social Science and Humanities Research Council of Canada	Agroecology Research Summit: Building Sustainable Agri-Food Systems in Canada and Beyond	Levkoe, C. Z.		\$24,892	2018-2019
Institute for Human Geography	Radical Food Geographies: Connecting Knowledges, Cultivating Practices, (re)Imagining Governance	Hammelmann, C.	Levkoe, C. Z.	\$4,000	2018-2019
VP Research Strategic - UMD Research Collaboration Grant Awarded by Lakehead University	Developing a Living Lab Learning Network in the Lake Superior Basin: Towards Local and Regional Sustainability	Galway, L. Levkoe, C. Z.		\$3,000	2018-2019

Connections Grant Awarded by Social Science and Humanities Research Council of Canada	Creating an Innovative and Democratic National Food Policy for Canada	Andrée, P. (Carleton University)	Levkoe, C. Z.	\$25,000	2018-2019
Partnership Engage Grant Awarded by Social Sciences and Humanities Research Council of Canada	The Indigenous Circle: Reconciliation and Resurgence through Food in Northwestern Ontario	Levkoe, C. Z.		\$24,000	2018-2020
Enrichment Funds Awarded American Association of Geographers	Food Justice Workshop	Levkoe, C. Z.		\$3,300	2019
Harbinger Foundation	Indigenous Food Circle	Levkoe, C. Z.		\$5,000	2019-2020
Partnership Engage Grant Awarded by Social Sciences and Humanities Research Council of Canada	Food Sovereignty and Fisheries Governance in Batchewana First Nation	Lowitt, K. (Brandon University)	Levkoe, C. Z.	\$24,965	2019-2021
Research Grant Awarded by Mitacs Globalink	Food Movements, Sustainable Food Systems and Indigenous-Settler Relations	Bohunicky, M. Levkoe, C. Z.		\$6,000	2019-2021
Insight Development Grant Awarded by the Social Sciences and Humanities Research Council of Canada	Fish as Food: Integrating Fisheries into Sustainable Food Systems for the Lake Superior Watershed	Levkoe, C. Z. Lowitt, K. (Brandon University)		\$66,486	2019-2022
Aid to Scholarly Publications Awarded by the Social Sciences and Humanities Research Council of Canada	Canadian Food Studies/ La Revue canadienne des etudes sur l'alimentation	Levkoe, C. Z.		\$96,300	2019-2022
Partnership Development Grant Awarded by the Social Sciences and Humanities Research Council of Canada	Lake Superior Living Labs Network: Enhancing Capacity for Regenerative Social-Ecological Systems	Levkoe, C. Z.		\$188,106	2019-2023

Insight Grant Awarded by the Social Sciences and Humanities Research Council of Canada	Civil Society and Social Movement Engagement in Food Systems Governance	Levkoe, C. Z.		\$244,910	2019-2025
Gambling Research Exchange Ontario, BET: Student Capacity Program	<i>Gambling and gaming harm reduction: A KT project for young adults in Northern Ontario</i>	Mazmanian, D.		\$13,440	March 20, 2019 (ongoing)
CIHR Team Grant	<i>Deepening the Roots of Living in a Good Way for Indigenous Children. The Indigenous Mentorship Program</i>	McGavock, J. McComber, A. Ferguson, L. Halas, J. Levesque, L. Storey, K. Young, N.	Desjarlais, F. Torrance, B. Ballie, C. Dart, A. Johnson, J. King, M. Mchugh, T. Mushquash, A. Mushquash, C. J. Shen, G. Willows, N.	\$1,495,000	2018-2023
SSHRC Exchange Program	Psychosocial Interventions for Neonatal Abstinence Syndrome	Murphy-Oikonen, J.		\$1,000	June 2019
CIHR Planning and Dissemination Grant	<i>Determining the optimal delivery and content of pediatric weight management services for families living in remote First Nations communities</i>	Mushquash, A.	Ball, G. McGavock, J. Mushquash, C. J. Pearson, E.	\$15,000	2018-2019
Canadian Institutes of Health Research – Subgrant Agreement	Promoting resilience in incoming undergraduate students: Implementation and evaluation of a resilience app	Mushquash, A.		\$109,480	2018-2020
CIHR Project Grant	<i>Developing a Transdiagnostic Group Intervention for First Nations Children and Youth</i>	Mushquash, C. J.	Kowatch, K.	\$160,000	2018-2022
Indigenous Services Canada	<i>'Choose Life': Evaluation of Jordan's Principle Projects in Nishnawbe-Aski First Nations</i>	Mushquash, C. J. Hill, M. E.		\$249,965	2019-2020
ONCAT	Exploring Pathways for Oshki Training Institute Students into Lakehead's School of Social Work	Neckoway, R.		\$78,000	March 2019

CIHR Planning and Dissemination Grant - Institute Community Support	“Revisioning self-care management for seniors living with diabetes: A community consultation”.	Plazas, C.	Costa, I. G. Tregunno Duhn Alvorado	\$19,500	December 2018
Thunder Bay Catholic District School Board	Evaluation of the Strengths Assessment and Intervention in the TBCDSB	Rawana, E.		\$50,000	Sept 2018-June 2019
VPRI Strategic – International Research Partnership Award	Exploration of collaborative clinical research with York St. John University	Sanzo, A.		\$5,000	October 2018
NOSM NOSMFA Research Development Grant	The effects of shockwave therapy and the assessment of osteoporotic changes using quantitative ultrasound imaging in a rodent model	Sanzo, A. (COI)		\$7,125	April 2019
CMHA Thunder Bay	Crisis Consultations	Scharf, D.		\$1,800	February 2019
CMHA Thunder Bay	Joint Mobile Crisis Program – Program Evaluation	Scharf, D.		\$10,000	March 2019
NorWest CMHC/Public Health Agency of Canada	Evaluation design for the harm reduction peer mentorship project	Scharf, D.		\$9,355	March 2019
SSHRC	Quality of life and quality of care for cancer patients with comorbid chronic physical health conditions		Scharf, D.	\$17,000	April 2019
SSHRC PDG	Cannot disclose	Schiff, R.		\$79,990	March 2019
Lakehead Senate Research Committee	Cooperative housing – impacts on community wellbeing and social cohesion in the Canadian context	Schiff, R.		\$7,000	March 2019
Public Health Agency of Canada, Preventing Gender Violence Grant	<i>Youth Violence Prevention in Thunder Bay District</i>	Scofich, R.	Nadin, S. Hill, M. E. Olsen, C. Wenzel, S. Chevrette, L. Albanese McFarlane, J. Crooks, C. Mushquash, C. J.	\$955,111	2018-2023

CIHR Planning and Dissemination Grant – Institute Community Support	Integrating knowledge users to identify research priorities in a Northwestern Ontario start-up mine: Implications for preventing injury among female miners.		Sinden, K. E. (COI) Mackenzie, C. (COI) Dorman, S. D. (COI) Eger, T. (COI) Kristman, V. (COI) Pearson, E. (COI)	\$9,064.92	2018-2019
CIHR – Catalyst Grant	Identifying the impact of formal and informal critical incident interventions on firefighters’ exposure to post-traumatic stress injury in a Northwestern Ontario fire service	Sinden, K. E.		\$100,534	February 2019
CROSH – Speed Grant Competition	PTSD Information Guide: Offering support for employers, workers, and family members		Sinden, K. E. (COI)	\$9,970	May 2019
CROSH – Seed Grant Competition	Managing Critical Incident Exposure among Subgroups of Thunder Bay Fire Rescue Firefighters: Considering Impacts of Sex/Gender and Years of Service	Sinden, K. E.		\$9,910	May 2019
Canadian Institutes of Health Research (Team Grant: Mental Wellness in Public Safety Team Grants – Letter of Intent Development Grant)	Resiliency training for firefighters: a national implementation evaluation		Sinden, K. E. (COI)	\$30,000	June 2019
SSHRC Insight Development Grant	Preparing students for rural careers: Examining the learning processes and outcomes in rural medical education in Canada	Stroink, M.		\$62,200	June 2019
Employment and Social Development Canada: New Horizons for Seniors Program-Community-Based Projects	Changing Melodies: A Declaration of Independence		Sutherland, N. (COI)	\$24,575	2019-2020

CIHR	<i>Inclusive and Just End-of-Life Decision Making in Long-Term Care Homes</i>	Sutherland, N.	Wiersma, E.		2019-2022
Canadian Institutes of Health Research (CIHR), Project Grant	Promoting Just and Inclusive End-of-life Decision-making for Long-term Care Residents with Dementia and their Care Partners	Sutherland, N.		\$195,075	April 2019-2022
Northern Ontario School of Medicine Association – Clinical Innovation Grant 2018-2019	<i>Improving evidence-based pain care and opioid stewardship in Northern Ontario: An evaluation of health provider behavior changes following participation in Project Extension for Community Health Outcomes</i>		Macleod, B. Smyth, C. Larocque, T. Rash, J. Glynn, B. Poulin, P. A. Mushquash, C. J.	\$49,990	
Emerging Leader of America (ELAPS)	Static and Dynamic Testing of 3D-Printed Designs for Injuries Prevention and Rehabilitation	Villa, R. (student of Zerpa, C.)		\$15,000	January 2019
CIHR Project Grant	<i>Towards a Foundation of Indigenous Health Research Grounded in Our Relationships</i>	Walker, J. Pedri, C.	Carlson, E. Cote-Meek, S. Fortin, D. Manitowabi, D. Moeke-Pickering, T. Mushquash, C. J.	\$75,000	2018-2019
Public Health Agency of Canada Community Dementia Investment	<i>Building Community Capacity for Meaningful Participation of People Living with Dementia</i>	Wiersma, E. Phinney, A. (University of British Columbia)	Sutherland, N. (COI)	\$999,888	2019-2023
New Horizons For Seniors Grant	<i>A Changing Melody Conference: A Declaration of Independence</i>	Wiersma, E.		\$24,965	2019-2020
North West LHIN Dementia Funding	<i>Dementia Café: A Place to Belong</i>	Wiersma, E.		\$25,145	Annually (ongoing base funding)
North West LHIN Dementia Funding	<i>Behavioural Supports Ontario Community Education Funding</i>	Wiersma, E.		\$18,000	Annually (ongoing base funding)
CIHR Project Grant	<i>Educating for Equality: Building Culturally Safe Care through Indigenous Narratives</i>	Wylie, L. Ray, L.	Mushquash, C. J. Pitawanakat, B. Smye, V. Wathen, N. Forchuck, C.	\$460,050	2019-2024

Healthy Brains Healthy Lives Initiative, McGill University	Promoting brain health and resilience in social work students: Implementation and evaluation of a smartphone application.		Mushquash, A.	\$19,992	2019-2021
Social Sciences and Humanities Research Council – Connection Grant	Increasing the dissemination of best practices in psychology: Practice guidelines, practice- research networks, clinical tools, progress tracking, and evidence based practice.		Mushquash, A.	\$45,761	2019-2020
CHIR – Catalyst Grant	Identifying the impact of formal and informal critical incident interventions on firefighters exposure to post-traumatic stress injury in a Northwestern Ontario fire service		Vis, J.	\$100,534	February 2019
SSHRC: Enhancement Program	Investigating Psychological and Cognitive Factors Impacting Student Transition to University	Zerpa, C.		\$1,500	June 2019



RESEARCH CENTRES

FHBS faculty members and students are also actively involved in the following Lakehead University Research Centres:

Centre for Health Care Ethics (CHCE)

The Food Security Research Network (FSRN)

The Centre of Education and Research on Positive Youth Development (CERPYPD)

Centre for Education and Research on Aging & Health (CERAH)

Centre for Research on Safe Driving (CRSD)





CONTACT US



Dean of the Faculty of Health and Behavioural Sciences



<https://www.lakeheadu.ca/programs/faculties/health-and-behavioural-sciences>



fhbs@lakeheadu.ca



Department of Health Sciences



<https://www.lakeheadu.ca/programs/departments/health-sciences>



lmartin@lakeheadu.ca



School of Kinesiology



<https://www.lakeheadu.ca/programs/departments/kinesiology>



inewhous@lakeheadu.ca



School of Nursing



<https://www.lakeheadu.ca/programs/departments/nursing>



kmcqueen@lakeheadu.ca



Department of Psychology



<https://www.lakeheadu.ca/programs/departments/psychology>



mstroink@lakeheadu.ca



School of Social Work



<https://www.lakeheadu.ca/programs/departments/social-work>



natimosh@lakeheadu.ca

