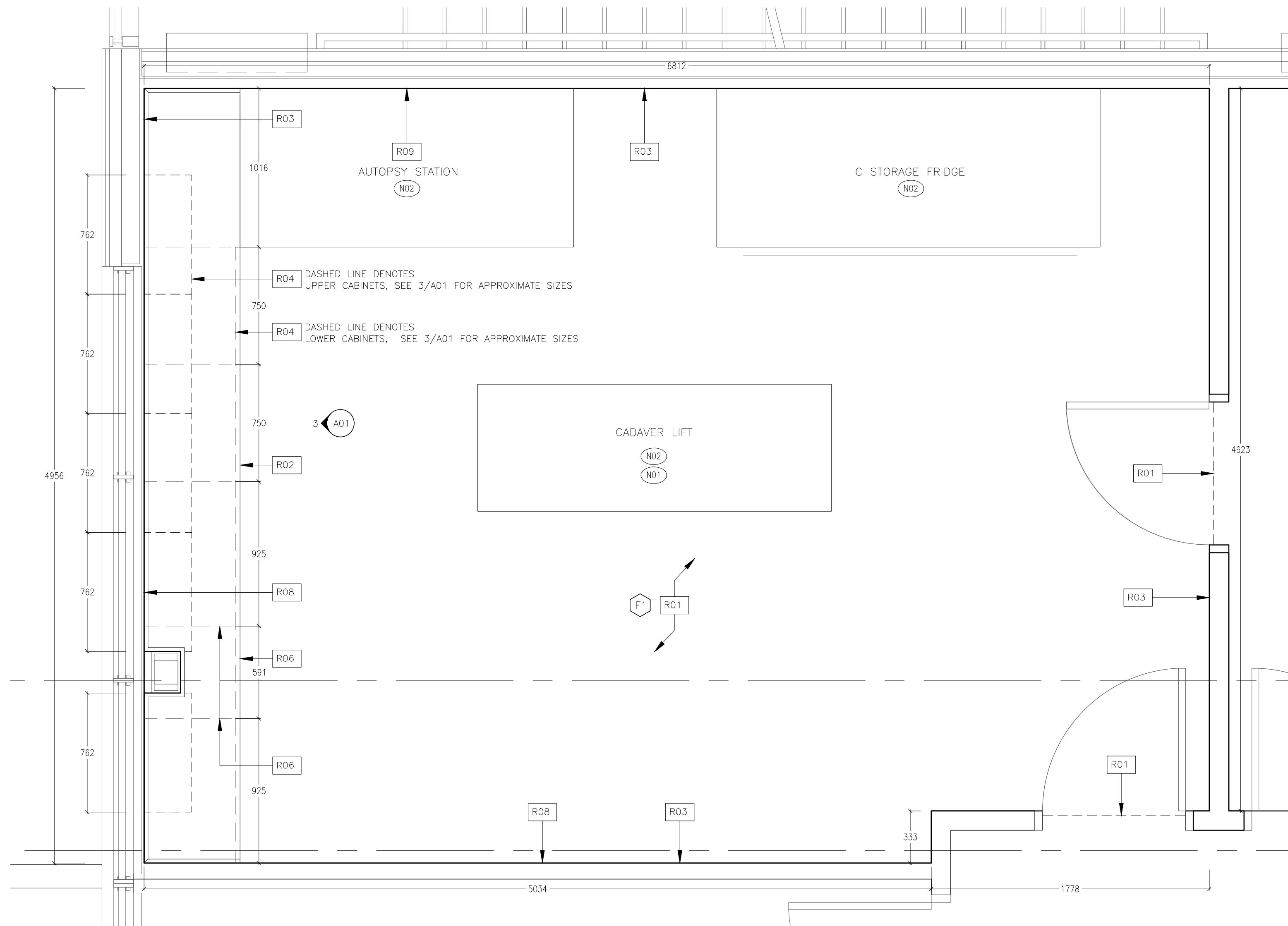
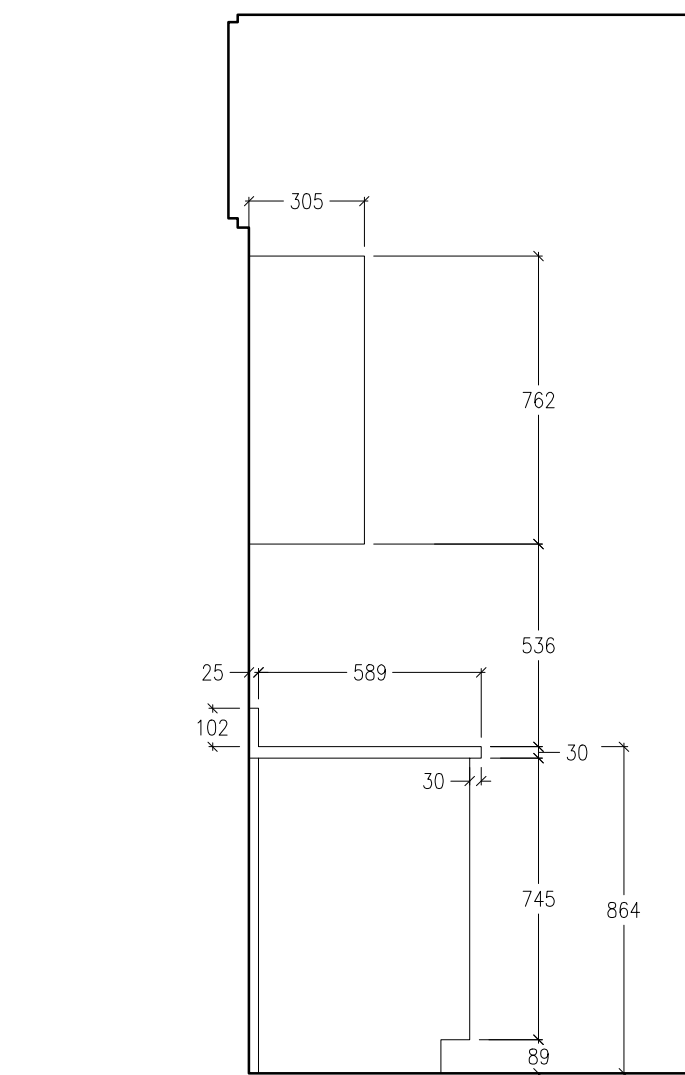


DASHED LINE DENOTES APROX. AREA OF EXISTING MILLWORK, EQUIPMENT AND LAB TABLES TO BE REMOVED – G.C. TO REMOVE FROM SITE

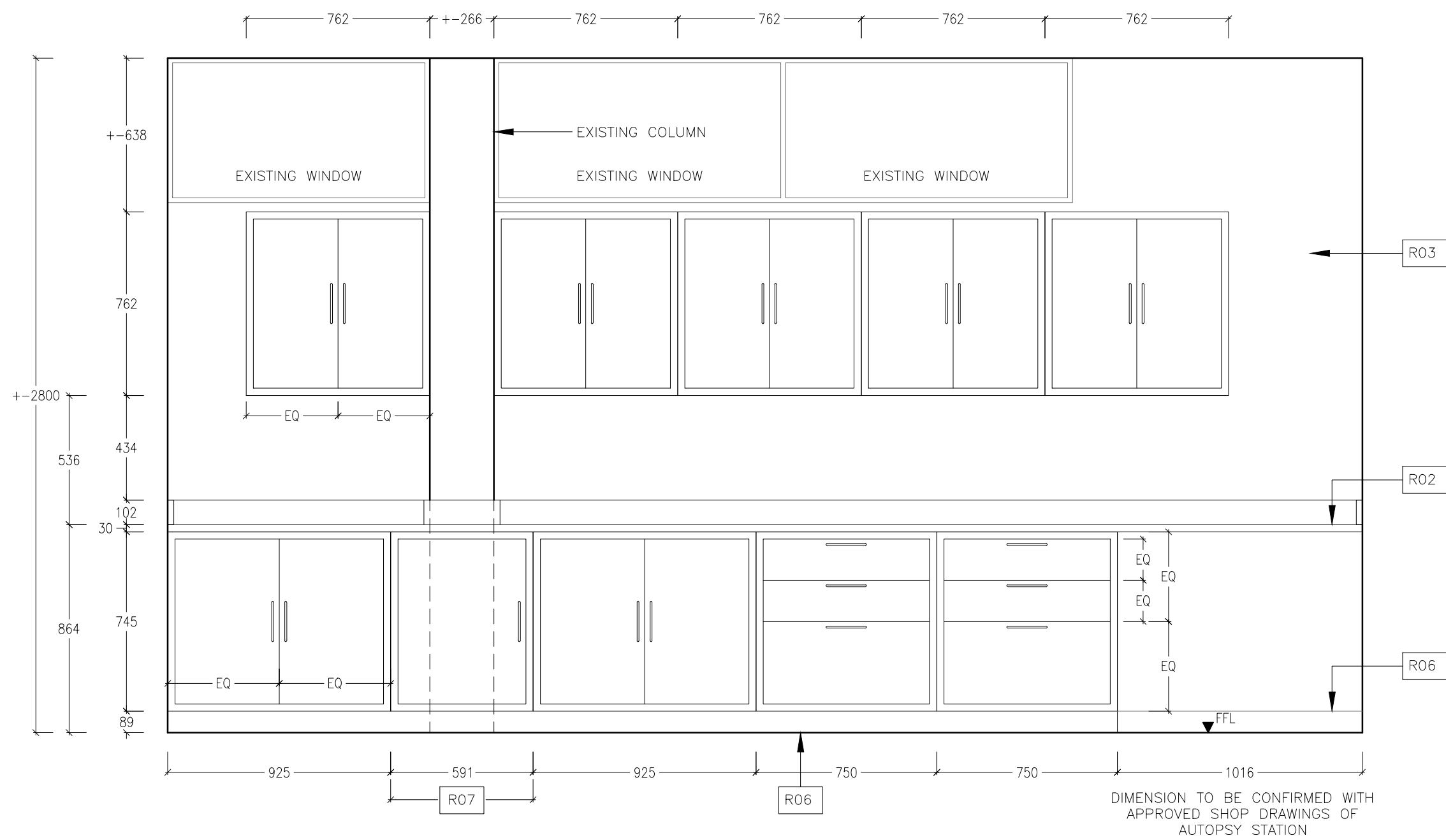
1
A01
GROUND FLOOR – DEMOLITION PLAN
1:50



2
A01
GROUND FLOOR – RENOVATION PLAN
1:20



4
A01
STAINLESS STEEL CABINETS – ASSEMBLY
1:20



3
A01
STAINLESS STEEL CABINETS' ELEVATION
1:20

DEMOLITION NOTES	
D01	CLIENT TO REMOVE 2x WALL MOUNTED TELEVISIONS, CEILING MOUNTED CAMERA, FRIDGE AND I.T. EQUIPMENT PRIOR TO CONSTRUCTION
D02	COORDINATE RELOCATION OF REQ. OUTLETS AND SWITCHES, SEE ELEC., MECH.
D03	REMOVE EXISTING MILLWORK, COORDINATE BACKING REQUIREMENTS FOR NEW CABINETS. PATCH DRYWALL AS REQUIRED.
D04	COORDINATE REMOVAL OF ELEC/IT CONNECTION, SEE ELEC., PROVIDE REQUIRED PATCH TO ALLOW NEW FLOOR INSTALLATION
D05	COORDINATE REMOVAL OF EXISTING SINK, LAB TABLES AND EQUIPMENT
D06	REMOVE EXISTING FLOORING, PREP SURFACE TO ACCEPT NEW, AS PER SPECIFICATION 09 65 16.23

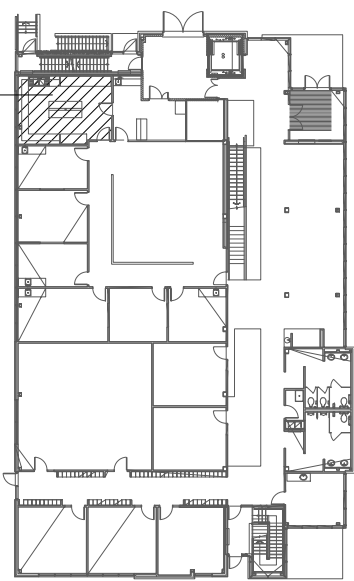
RENOVATION NOTES	
R01	NEW F1 FLOORING, WELD SEAMS AT THE DOOR THRESHOLDS (CENTERED BELOW CLOSED DOOR). F1: ARMSTRONGS MEDINTECH HOMOGENOUS SHEET FLOORING, FULLY WELDED SEAMS, COVE BASE, COLOUR TO MATCH ADJACENT LAB. PROVIDE SAMPLES FOR REVIEW AND SELECTION. REFER TO MANUFACTURERS SPECIFICATIONS.
R02	STAINLESS STEEL COUNTER TOP, WITH INTEGRATED BACKSPLASH, TO SPAN ACROSS ENTIRE LENGTH OF WALL, NO SEAMS/JOINTS. NOTCH AT EXISTING COLUMN. SEE SECTION 4/A01. COUNTER HEIGHT BASED ON AUTOPSY STATION. GENERAL CONTRACTOR TO COORDINATE WITH APPROVED SHOP DRAWINGS. STAINLESS STEEL COUNTER TOP WITH 30MM OVERHANG AND 102MM HIGH BACKSPLASH.
R03	PATCH ALL DEFECTS, DENTS AND CRACKS IN EXISTING DRYWALL PRIOR TO PAINTING. DUAL COATED PAINTED WALLS AND DOOR FRAMES. COLOUR TO MATCH ADJACENT LAB. PROVIDE SAMPLES FOR REVIEW AND SELECTION. SEE PAINTING SPECIFICATION.
R04	STAINLESS STEEL CABINETS TO APPROXIMATE INDICATED DIMENSIONS, COORDINATE WITH STAINLESS STEEL COUNTER TOP. CABINET SIZES TO BE BASED UPON SELECTED MANUFACTURER'S STANDARD SIZES. SEE SECTION 4/A01. BLOCKING, BACKING AND SUPPORT TO BE CONCEALED BEHIND CABINETS.
R05	FIELD VERIFY STAINLESS STEEL CABINET'S CUSTOM WIDTH, BASED ON SELECTED MANUFACTURER'S STANDARD CABINET SIZES.
R06	COVE BASE AS PER ARMSTRONG MEDINTECH HOMOGENOUS SHEET FLOORING INSTALLATION SPECIFICATION. AT WALLS AND CABINET BASE.
R07	FIELD VERIFY STAINLESS STEEL CABINET'S CUSTOM WIDTH, BASED ON SELECTED MANUFACTURER'S STANDARD CABINET SIZES IN RELATION TO LOCATION OF AUTOPSY STATION.
R08	GENERAL CONTRACTOR TO REVIEW BLOCKING BEHIND EXISTING MILLWORK AND T.V. MOUNTING BRACKETS. REMOVE DRYWALL TO EXPOSE FOR REVIEW WITH CONSULTANT. PRICE TO INCLUDE REMOVAL AND APPLICATION OF DRYWALL. BLOCKING REMEDIATION BEHIND T.V. MOUNTING BRACKETS NOT IN CONTRACT.
R09	GENERAL CONTRACTOR TO REVIEW EXISTING BLOCKING BEHIND AUTOPSY STATION. REMOVE DRYWALL TO EXPOSE FOR REVIEW WITH CONSULTANT. PRICE TO INCLUDE REMOVAL AND APPLICATION OF DRYWALL. PROVIDE REQUIRED BLOCKING AS PER LABWORKS DRAWING M04.

GENERAL NOTES	
N01	CLIENT TO COORDINATE LOCATION OF CADAVER LIFT
N02	LABWORKS EQUIPMENT, SEE MECH., ELEC.
ALL SUBMISSIONS FOR SUBSTITUTIONS TO BE SUBMITTED DURING THE TENDER STAGE.	

NOTES:

KEY PLAN

AREA OF WORK



DRAWING ISSUE RECORD

NO.	DATE	ISSUED FOR CONSTRUCTION	PDF
1	2018.28.03	ISSUED FOR CONSTRUCTION	PDF
2		DRAWING ISSUE RECORD	MEDIA

DISCLAIMER



PROJECT

NOSM -DISSECTION LAB UPGRADES

CLIENT

LAKEHEAD UNIVERSITY

955 OLIVER ROAD
THUNDER BAY, ON
P7B 5E1

BrookMcIlroy

ARCHITECTURE - LANDSCAPE ARCHITECTURE - URBAN DESIGN - PLANNING

202 - 37 Cumberland St. S.
Thunder Bay, ON P7B 2T4
T: 807 683 8005

SHEET TITLE

DEMOLITION, RENOVATION PLAN AND ELEVATION

PROJECT NO.

17-087

DESIGNED

SS

DRAWN

AV

DATE

MARCH 2018

SCALE

AS NOTED

SHEET NO.

A01

Division 2 - Existing Conditions

02.41.19 SELECTIVE DEMOLITION

Part 1 - GENERAL

1 SECTION INCLUDES

1 ALTERATION PROJECT PROCEDURES

2 REMOVAL OF DESIGNATED BUILDING EQUIPMENT AND FIXTURES

3 DISPOSAL OF MATERIALS

4 IDENTIFICATION OF UTILITIES

1.2 RELATED SECTIONS

1 NOT USED

1.3 ALTERATION PROJECT PROCEDURES

1 MATERIALS AS SPECIFIED IN PRODUCT SECTIONS, MATCH EXISTING PRODUCTS AND WORK FOR PATCHING AND EXTENDING WORK

2 EMPLOY SKILLED AND EXPERIENCED INSTALLER TO PERFORM EXTERIOR AND INTERIOR WORK

3 REMOVE, CUT, AND PATCH WORK IN A MANNER TO MINIMIZE DAMAGE AND TO PROVIDE MEANS OF RESTORING PRODUCTS AND FINISHES TO SPECIFIED CONDITION

4 WHERE NEW WORK ADJUTS OR ALIGNS WITH EXISTING, PROVIDE A SMOOTH AND EVEN TRANSITION. PATCH WORK TO MATCH EXISTING ADJACENT WORK IN TEXTURE AND APPEARANCE

5 WHEN FINISHED SURFACES ARE CUT SO THAT A SMOOTH TRANSITION WITH NEW WORK IS NOT POSSIBLE, TERMINATE EXISTING SURFACE ALONG A STRAIGHT LINE AT A NATURAL LINE OF DIVISION AND SUBMIT RECOMMENDATION TO CONSULTANT FOR REVIEW

6 WHERE A CHANGE OF PLANE OF 6 MM OR MORE OCCURS, SUBMIT RECOMMENDATION FOR PROVIDING A SMOOTH TRANSITION TO CONSULTANT FOR REVIEW

7 PATCH OR REPLACE PORTIONS OF EXISTING SURFACES WHICH ARE DAMAGED, LIFTED, DISCOLORED, OR SHOWING OTHER IMPERFECTIONS

8 FINISH SURFACES AS SPECIFIED IN INDIVIDUAL PRODUCT SECTIONS

1.4 ADMINISTRATIVE REQUIREMENTS

1 NOT USED

1.5 REGULATORY REQUIREMENTS

1 CONFORM TO APPLICABLE CODES FOR DEMOLITION WORK, DUST CONTROL, PRODUCTS REQUIRING ELECTRICAL DISCONNECTION AND RECONNECTION

2 OBTAIN REQUIRED PERMITS FROM AUTHORITIES

3 DO NOT CLOSE OR DISRUPT EGRESS WIDH TO ANY BUILDING OR SITE EXIT

4 DO NOT DISABE OR DISRUPT BUILDING FIRE OR LIFE SAFETY SYSTEMS WITHOUT THREE (3) DAYS PRIOR WRITTEN NOTICE TO OWNER

5 CONFORM TO APPLICABLE REGULATORY PROCEDURES WHEN DISCOVERING HAZARDOUS OR CONTAMINATED MATERIALS

1.6 PROJECT CONDITIONS

1 CONDUCT OPERATIONS TO MINIMIZE INTERFERENCE WITH ADJACENT AND OCCUPIED BUILDING AREAS

2 CEASE OPERATIONS IMMEDIATELY IF STRUCTURE APPEARS TO BE IN DANGER AND NOTIFY CONSULTANT. DO NOT RESUME OPERATIONS UNTIL DIRECTED

Part 2 - PRODUCTS

1 NOT USED

Part 3 - EXECUTION

3.1 PREPARATION

1 PROVIDE, ERECT, AND MAINTAIN TEMPORARY BARRIERS TO CONTAIN DUST WITHIN ROOM

2 ERECT AND MAINTAIN TEMPORARY PARTITIONS TO PREVENT SPREAD OF DUST, ODORS, AND NOISE TO PERMIT CONTINUED OWNER OCCUPANCY

3 PRETECT EXISTING MATERIALS AND STRUCTURE WHICH ARE NOT TO BE DEMOLISHED

4 PREVENT MOVEMENT OF STRUCTURE; PROVIDE BRACING AND SHORING

5 NOTIFY AFFECTED UTILITY COMPANIES BEFORE STARTING WORK AND COMPLY WITH THEIR REQUIREMENTS

6 MARK LOCATION AND TERMINATION OF UTILITIES

7 PROVIDE APPROPRIATE TEMPORARY SIGAGE INCLUDING SIGNAGE FOR EXIT OR BUILDING EGRESS

3.2 DEMOLITION

1 DISCONNECT, CAP, AND IDENTIFY DESIGNATED UTILITIES WITHIN DEMOLITION AREAS

2 DEMOLISH IN AN ORDERLY AND CAREFUL MANNER. PROTECT EXISTING SUPPORTING STRUCTURAL MEMBERS

3 REMOVE DEMOLISHED MATERIALS FROM SITE EXCEPT WHERE SPECIFICALLY NOTED OTHERWISE. DO NOT BURN OR BURY MATERIALS ON SITE

4 REMOVE MATERIALS AS WORK PROGRESSES. UPON COMPLETION OF WORK, LEAVE AREAS IN CLEAN CONDITION

5 REMOVE TEMPORARY WORK

END OF SECTION

Division 1 - FINISHES

09.22.00 SUPPORTS FOR GYPSUM & CEMENT BOARD

Part 1 - GENERAL

SUMMARY

BLOCKING BOLT OR SCREW STEEL CHANNELS TO STUDS OR NAIL OR SCREW WOOD BLOCKING TO STUDS, AS REQUIRED. REMOVE BLOCKING BEHIND EXISTING MILLWORK AND T.V. MOUNTING BRACKETS. REMOVE DRYWALL TO EXPOSE FOR REVIEW BY CONSULTANT.

Part 2 - PRODUCTS

BACKER PLATES

1 METAL BACKER PLATES: STEEL, GALVANIZED, MINIMUM 150 MM (6") WIDE X 0.836 MM (0.0329") MINIMUM X LENGTH AND WIDTH TO SUIT SIZE OF ITEMS TO BE ATTACHED. FASTENED TO STUDS FOR ATTACHMENT OF SURFACE MOUNTED FITTINGS AND ACCESSORIES

2 PLYWOOD BACKER PLATES: 50FT WOOD PLYWOOD, 19 MM (3/4") MINIMUM X LENGTH AND WIDTH TO SUIT SIZE OF ITEMS TO BE ATTACHED. FASTENED TO STUDS FOR ATTACHMENT OF SURFACE MOUNTED FITTINGS AND ACCESSORIES

3 ELIMINATION OF BACKER PLATES OR DIRECT ATTACHMENT OF ACCESSORIES OR EQUIPMENT TO STUDS WILL NOT BE PERMITTED

Part 3 - EXECUTION

BLOCKING

1 ATTACH TO FRAMING ADEQUATE BACKER PLATES TO SUPPORT THE LOAD OF, AND TO WITHSTAND THE WITHDRAWAL AND SHEAR FORCES IMPOSED BY, ITEMS INSTALLED UPON THE WORK OF THIS SECTION. SUCH ITEMS INCLUDE, BUT ARE NOT RESTRICTED TO: 1. MOUNTED CABINETS

2 MOUNTING BRACKETS FOR TELEVISION

3 LABWORKS AUTOPSY STATION

END OF SECTION

09.21.16 GYPSUM BOARD ASSEMBLIES

WORK IN EXISTING AREAS

1 IN EXISTING AREAS, WHERE EXISTING GYPSUM BOARD WORK HAS BEEN DEMOLISHED AND/OR DAMAGED AND REPAIR WORK IS REQUIRED, PROVIDE NEW GYPSUM BOARD FINISH

THOROUGHLY PREPARE AREAS TO BE REPAIRED. PROVIDE NEAT, CLEAN AND STRAIGHT CUTS

3 FINISH ALL REPAIR WORK AS SPECIFIED FOR NEW WORK

4 IN EXISTING AREAS WHERE EXISTING OPENINGS ARE TO BE FILLED WITH GYPSUM BOARD, PROVIDE NEW GYPSUM BOARD WALL AND CEILING CONSTRUCTION. ENSURE NEW BOARD FACES ARE FLUSH WITH FACES OF ADJUTING EXISTING WALLS AND CEILINGS

JOINT PATCHING AND FINISHING

1 INSTALL REINFORCING TAPE AND A MINIMUM OF 3 COATS OF JOINT COMPOUND OVER GYPSUM BOARD JOINTS, METAL TRIM AND ACCESSORIES, AND SECURE FASTENERS IN ACCORDANCE WITH THE GYPSUM BOARD MANUFACTURER'S INSTRUCTIONS

2 FILL GAPS BETWEEN, AND ANY IMPERFECTIONS IN, GYPSUM BOARDS WITH JOINT COMPOUND, ALLOW TO DRY, AND SAND SMOOTH READY FOR PAINTING

3 INSTALL FINISHED GYPSUM BOARD WORK SMOOTH, SEAMLESS, PLUMB, TRUE, FLUSH, AND WITH SQUARE, PLUMB, AND NEAT CORNERS

4 FINISH GYPSUM BOARD IN ACCORDANCE WITH ASTM C840

END OF SECTION

09.65.16.23 RESILIENT FLOORING - VINYL SHEET FLOORING

Part 1 - GENERAL

1 SUMMARY

1 SECTION INCLUDES

1 FLOORING AND ACCESSORIES AS SHOWN ON THE DRAWINGS AND SCHEDULES AND AS INDICATED BY THE REQUIREMENTS OF THIS SECTION

2 RELATED DOCUMENTS

1 DRAWINGS AND GENERAL PROVISIONS OF THE CONTRACT INCLUDING GENERAL AND SUPPLEMENTARY CONDITIONS AND DIVISION 1 SECTIONS APPLY TO THE WORK OF THIS SECTION

1.2 REFERENCES

1 ARMSTRONG FLOORING TECHNICAL MANUALS

1 ARMSTRONG FLOORING GUARANTEED INSTALLATION SYSTEMS MANUAL, F-5061

2 ARMSTRONG FLOORING MAINTENANCE RECOMMENDATIONS AND PROCEDURES MANUAL, F-5062

2 ASTM INTERNATIONAL

1 ASTM F 648 STANDARD TEST METHOD FOR CRITICAL RADIANT FLUX OF FLOOR-COVERING SYSTEMS USING A RADIANT HEAT ENERGY SOURCE

2 ASTM E 682 STANDARD TEST METHOD FOR SPECIFIC OPTICAL DENSITY OF SMOKE GENERATED BY SOLID MATERIALS

3 ASTM F 710 STANDARD PRACTICE FOR PREPARING CONCRETE FLOORS TO RECEIVE RESILIENT FLOORING

9 ASTM F 1861 STANDARD SPECIFICATION FOR RESILIENT WALL BASE

4 ASTM F 1869 STANDARD TEST METHOD FOR MEASURING VAPOR EMISSION RATE OF CONCRETE SUBFLOOR USING ANHYDROUS CALCIUM CHLORIDE

7 ASTM F 1919 STANDARD SPECIFICATION FOR VINYL SHEET FLOOR COVERING WITHOUT BACKING

8 ASTM F 2370 STANDARD TEST METHOD FOR DETERMINING RELATIVE HUMIDITY IN CONCRETE FLOOR SLABS USING IN SITU PROBES

3 STANDARDS COUNCIL OF CANADA

1 CANULC-S1022 STANDARD TEST METHOD FOR SURFACE BURNING CHARACTERISTICS OF FLOORING, FLOOR COVERING AND MISCELLANEOUS MATERIALS AND ASSEMBLIES

1.3 SYSTEM DESCRIPTION

1 PERFORMANCE REQUIREMENTS - PROVIDE FLOORING WHICH HAS BEEN MANUFACTURED, FABRICATED AND INSTALLED TO PERFORMANCE CRITERIA CERTIFIED BY MANUFACTURER WITHOUT DEFECTS, DAMAGE, OR FAILURE

2 ADMINISTRATIVE REQUIREMENTS

1 PRE-INSTALLATION MEETING CONDUCT AN ON-SITE PRE-INSTALLATION MEETING TO VERIFY PROJECT REQUIREMENTS, SUBSTRATE CONDITIONS, MANUFACTURER'S INSTALLATION INSTRUCTIONS AND MANUFACTURER'S WARRANTY REQUIREMENTS

3 SEQUENCING AND SCHEDULING

1 INSTALL FLOORING AND ACCESSORIES AFTER THE OTHER FINISHING OPERATIONS, INCLUDING PAINTING, HAVE BEEN COMPLETED. CLOSE SPACES TO TRAFFIC DURING THE INSTALLATION OF THE FLOORING

1.4 SUBMITTALS

1 SUBMIT SHOP DRAWINGS, SEAMING PLAN, COVING DETAILS, AND MANUFACTURER'S TECHNICAL DATA, INSTALLATION AND MAINTENANCE INSTRUCTIONS (LATEST EDITION OF ARMSTRONG FLOORING GUARANTEED INSTALLATION SYSTEMS MANUAL, F-5061), OR EQUIVALENT FROM APPROVED MANUFACTURER OF AN EQUAL FLOORING PRODUCT FOR FLOORING AND ACCESSORIES

2 SUBMIT THE MANUFACTURER'S STANDARD SAMPLES SHOWING THE REQUIRED COLORS FOR FLOORING, WELDING RODS, AND APPLICABLE ACCESSORIES

3 SUBMIT SAFETY DATA SHEETS (SDS) AVAILABLE FOR FLOORING PRODUCTS, ADHESIVES, WELD ROD, PATCHING/LEVELING COMPOUNDS, FLOOR FINISHES (POLISHES) AND CLEANING AGENTS

4 CLOSEOUT SUBMITTALS: SUBMIT THE FOLLOWING

1 WARRANTY - WARRANTY DOCUMENTS SPECIFIED HEREIN

1.5 QUALITY ASSURANCE

1 SINGLE-SOURCE RESPONSIBILITY: PROVIDE TYPES OF FLOORING AND ACCESSORIES SUPPLIED BY ONE MANUFACTURER, INCLUDING TO LEVELING AND PATCHING COMPOUNDS

2 SELECT AN INSTALLER WHO IS COMPETENT IN THE INSTALLATION OF ARMSTRONG RESILIENT SHEET FLOORING USING HEAT-WELDED SEAMS

1 ENGAGE INSTALLERS CERTIFIED AS ARMSTRONG COMMERCIAL FLOORING CERTIFIED INSTALLERS

2 CONFIRM INSTALLER'S CERTIFICATION BY REQUESTING THEIR CREDENTIALS

1.6 LIMITED WARRANTY

1 RESILIENT FLOORING - SUBMIT A WRITTEN WARRANTY EXECUTED BY THE MANUFACTURER, AGREEING TO REPAIR OR REPLACE RESILIENT FLOORING THAT FAILS WITHIN THE WARRANTY PERIOD

2 LIMITED WARRANTY PERIOD: 5 YEARS

3 THE LIMITED WARRANTY SHALL NOT DERIVE THE OWNER OF OTHER RIGHTS THE OWNER MAY HAVE UNDER OTHER PROVISIONS OF THE CONTRACT DOCUMENTS AND WILL BE IN ADDITION TO AND RUN CONJUNCTIVE WITH OTHER WARRANTIES MADE BY THE CONTRACTOR UNDER THE REQUIREMENTS OF THE CONTRACT DOCUMENTS

4 FOR THE LIMITED WARRANTY TO BE VALID, THIS PRODUCT IS REQUIRED TO BE INSTALLED USING THE APPROPRIATE ARMSTRONG FLOORING GUARANTEED INSTALLATION SYSTEM. PRODUCT INSTALLED NOT USING THE SPECIFIC INSTRUCTIONS FROM THE GUARANTEED INSTALLATION SYSTEM WILL VOID THE WARRANTY.

Part 2 - PRODUCTS

2.1 MANUFACTURER

1 RESILIENT SHEET FLOORING, WALL BASE, ADHESIVES AND ACCESSORIES

1 ARMSTRONG FLOORING INC., 2500 COLUMBIA AVENUE, LANCASTER, PA 17603, WWW.ARMSTRONGFLOORING.COM/COMMERCIAL

2 APPROVED MANUFACTURER OF EQUAL PRODUCT

2.2 RESILIENT SHEET FLOORING MATERIALS

1 PROVIDE HOMOGENEOUS SHEET VINYL FLOORING COLIBRAM™ MEDITECH® MANUFACTURED BY ARMSTRONG FLOORING INC. OR APPROVED EQUAL, AS DESCRIBED BELOW

1 DESCRIPTION: AN UNBACKED, NON-LAYERED, HOMOGENEOUS SHEET VINYL FLOORING, PROTECTED BY A UV-CURED POLYURETHANE FINISH, THE COLORS AND PATTERN DETAIL ARE DISPERSED UNIFORMLY THROUGHOUT THE THICKNESS OF PRODUCT. COLOR PATTERN IS AVAILABLE IN A VARIETY OF WATER AND RESISTANT TO CLEANING AGENTS AND LIGHT

2 FINISH: A LOW-TOUCH, LOW-GLARE, LOW-REFLECTANCE FINISH

3 PATTERN AND COLOR: TO MATCH ADJACENT WALL COLOR SELECTED FROM THE RANGE CURRENTLY AVAILABLE FROM ARMSTRONG FLOORING

4 WIDTH: 6 FT. (1.83 M)

5 LENGTH: UP TO 48 FT. LINEAL FEET (25 METERS)

6 THICKNESS: 0.080 IN. (2.0 MM)

2 VINYL WELD ROD

1 PROVIDE VINYL WELD ROD AS PRODUCED BY ARMSTRONG FLOORING INC. AND INTENDED FOR HEAT WELDING OF SEAMS. COLOR SHALL BE MATCH FIELD COLOR OF FLOORING. RODS SELECTED FROM THE RANGE CURRENTLY AVAILABLE FROM ARMSTRONG FLOORING INC.

2.3 PRODUCT SUBSTITUTION

1 REFER TO THE SUBSTITUTION TO SECTION 80.21.13 FOR INSTRUCTIONS TO BIDDERS ON SUBSTITUTIONS.

2.4 WALL BASE MATERIALS

1 PROVIDE INTEGRAL FLASH COVE WALL BASE BY EXTENDING SHEET FLOORING 4 IN. UP THE WALL. ADHESIVE, WELDING ROD, AND ACCESSORIES RECOMMENDED AND APPROVED BY THE GYPSUM BOARD MANUFACTURER.

2.5 ADHESIVES

1 PROVIDE ARMSTRONG ADHESIVE AS RECOMMENDED BY MANUFACTURER FOR EXISTING SUBSTRATE FOR FIELD AREAS, AND ARMSTRONG S-580 FLASH COVE ADHESIVE AT FLASH COVING AS RECOMMENDED BY THE FLOORING MANUFACTURER.

2.6 ACCESSORIES

1 FOR PATCHING, SMOOTHING, AND LEVELING MENDLINE® SURFLOORS (CONCRETE, TERRAZZO, QUARRY TILE, CERAMIC TILE, AND CERTAIN METALS). PROVIDE ARMSTRONG S-104

2 FAST-SETTING CEMENT-BASED PATCH AND UNDERLAYMENT OR UNDERLAYER AS RECOMMENDED BY MANUFACTURER

2 FOR SEALING JOINTS BETWEEN THE TOP OF WALL BASE OR INTEGRAL COVE CAP AND IRREGULAR WALL SURFACES SUCH AS CORNERS, PROVIDE PLASTIC FILLS AS APPROVED BY THE ARCHITECT.

3 PROVIDE TOP EDGE TRIM FOR ANODIZED ALUMINUM FOR COVERED SHEET VINYL

1 BURKE FLOORING 390 SQUARE CAP - CAP FOR 1/8" COVERED SHEET VINYL

4 PROVIDE A FILLET SUPPORT STRIP FOR INTEGRAL COVE BASE WITH A MINIMUM RADIUS OF 1/4 IN. OF PLASTER

5 PROVIDE TRANSITION/REDUCING STRIPS TAPERED TO MEET ADJUTING MATERIALS.

Part 3 - EXECUTION

3.1 MANUFACTURER'S INSTRUCTIONS

1 COMPLIANCE. COMPLY WITH MANUFACTURER'S PRODUCT DATA, INCLUDING TECHNICAL BULLETINS, PRODUCT CATALOG, INSTALLATION INSTRUCTIONS, AND PRODUCT CARTON INSTRUCTIONS FOR INSTALLATION AND MAINTENANCE PROCEDURES AS NEEDED

3.2 EXAMINATION

1 VISUALLY INSPECT FLOORING MATERIALS, ADHESIVES AND ACCESSORIES PRIOR TO INSTALLATION. FLOORING MATERIAL WITH VISUAL DEFECTS SHALL NOT BE INSTALLED AND SHALL NOT BE CONSIDERED AS A LEGITIMATE CLAIM

2 EXAMINE SUBFLOORS PRIOR TO INSTALLATION TO DETERMINE THAT SURFACES ARE SMOOTH AND FREE FROM CRACKS, HOLES, RIDGES, AND OTHER DEFECTS THAT MIGHT PREVENT ADHESIVE BOND OR IMPAIR DURABILITY OR APPEARANCE OF THE FLOORING MATERIAL

3 REPORT CONDITIONS CONTRARY TO CONTRACT REQUIREMENTS THAT WOULD PREVENT A PROPER INSTALLATION, DO NOT PROCEED WITH THE INSTALLATION UNTIL DEFECTS OR IMPERFECTIONS HAVE BEEN CORRECTED

4 FAILURE TO CALL ATTENTION TO DEFECTS OR IMPERFECTIONS WILL BE CONSIDERD AS ACCEPTANCE AND APPROVAL OF THE SUBFLOOR. INSTALLATION ACCEPTS ADAPTATION OF SUBSTRATES WITH REGARD TO CONDITIONS EXISTING AT THE TIME OF INSTALLATION.

3.3 PREPARATION

1 REFER TO THE ARMSTRONG FLOORING GUARANTEED INSTALLATION SYSTEMS MANUAL, F-5061 AND ASTM F 710 STANDARD PRACTICE FOR PREPARING CONCRETE FLOORS TO RECEIVE RESILIENT FLOORING FOR ADDITIONAL INFORMATION ON SUBFLOOR PREPARATION

2 SUBFLOOR PREPARATION: SMOOTH CONCRETE SURFACES. REMOVING ROUGH AREAS, PROJECTIONS, RIDGES, AND BUMPS; AND FILLING LOW SPOTS; CONTROL OF CONSTRUCTION JOINTS; AND OTHER DEFECTS WITH ARMSTRONG FLOORING UNDERLAYMENT AS RECOMMENDED BY THE FLOORING MANUFACTURER

3 SUBFLOOR CLEANING: THE SUBFLOOR SHALL BE FREE OF DUST, SOLVENTS, VARNISH, PAINT, WAX, OIL, GREASE, SEALERS, RELEASE AGENTS, CURING COMPOUNDS, RESIDUAL ADHESIVE, ADHESIVE REMAINERS AND OTHER FOREIGN MATERIALS THAT MIGHT AFFECT THE ADHESIVE BOND. REMOVE ALL OF THE CONCRETE OR CAUSE A DISCOLORATION OF THE FLOORING FROM BELOW. REMOVE RESIDUAL ADHESIVES AS RECOMMENDED BY THE FLOORING MANUFACTURER. REMOVE CURING AND HARDENING COMPOUNDS NOT COMPATIBLE WITH THE ADHESIVES USED, AS INDICATED BY A BOND TEST OR BY THE COMPOUND MANUFACTURER'S RECOMMENDATIONS FOR FLOORING. AVOID ORGANIC SOLVENTS, SPRAY PAINTS, PERMANENT MARKERS AND OTHER INDELEIBLE INK MARKERS MUST NOT BE USED TO WRITE ON THE BACK OF THE FLOORING MATERIAL, OR USED TO MARK THE CONCRETE SLAB AS THEY COULD BLEED THROUGH.

4 TELEGRAPHING UP TO THE SURFACE OF THE FLOORING, STAINING THE FLOORING MATERIAL. IF THESE CONTAMINANTS ARE PRESENT ON THE SUBSTRATE THEY MUST BE MECHANICALLY REMOVED PRIOR TO THE INSTALLATION OF THE FLOORING MATERIAL.

4 CONCRETE PH TESTING: PERFORM PH TESTS ON CONCRETE FLOORS. REGARDLESS OF THEIR AGE OR GRADE LEVEL, ALL TEST RESULTS SHALL BE DOCUMENTED AND RETAINED.

3.4 INSTALLATION OF FLOORING

1 INSTALL FLOORING IN STRICT ACCORDANCE WITH THE LATEST EDITION OF ARMSTRONG FLOORING GUARANTEED INSTALLATION SYSTEMS MANUAL, F-5061. FAILURE TO COMPLY MAY RESULT IN VOIDING THE MANUFACTURER'S WARRANTY. LISTED IN SECTION 1.6.

2 INSTALL FLOORING WALL TO WALL, BEFORE THE INSTALLATION OF FLOOR-SET CABINETS, CASEWORK, FURNITURE, EQUIPMENT, MOVABLE PARTITIONS, ETC. EXTEND FLOORING INTO THE SPACES, DOOR RECESSES, CLOSETS, AND SIMILAR OPENINGS AS SHOWN ON THE DRAWINGS.

3 SCREWS, CUT, AND FIT OR FLASH COVE TO PERMANENT FIXTURES, COLUMNS, WALLS, PARTITIONS, PIPES, OUTLETS, AND BUILD-IN FURNITURE AND CABINETS.

4 ADHERE FLOORING TO THE SUBFLOOR WITHOUT CRACKS, VOIDS, BONDING AND PUCKERING AT THE SEAMS. ROLL WITH A 100-POUND (45.36 KILOGRAM) ROLLER IN THE FIELD AREAS HAND-ROLL FLOORING AT THE PERIMETER AND THE SEAMS TO ASSURE ADHESION. REFER TO SPECIFIC ROLLING INSTRUCTIONS OF THE FLOORING MANUFACTURER.

5 LAY FLOORING TO PROVIDE A MINIMUM NUMBER OF SEAMS. AVOID CROSS SEAMS, FILLER PIECES, AND STRIPS. MATCH EDGES FOR COLOR SHADING AND PATTERN AT THE SEAMS.

6 COMPLIANCE WITH THE MANUFACTURER'S RECOMMENDATIONS, INCLUDING THE USE OF ADHESIVES, TOOLS, AND PROCEDURES IN STRICT ACCORDANCE WITH THE MANUFACTURER'S WRITTEN INSTRUCTIONS. OBSERVE THE RECOMMENDED ADHESIVE TROWEL NOTCHING, OPEN TIMES, AND WORKING TIMES.

7 PREPARE HEAT-WELDED SEAMS WITH SPECIAL RODDING TOOL. SUPPLIED FOR THIS PURPOSE. HEAT WELD WITH VINYL WELDING ROD IN SEAMS. USE METHODS AND SEQUENCE OF WORK IN CONFORMANCE WITH WRITTEN INSTRUCTIONS OF THE FLOORING MANUFACTURER. FINISH ALL SEAMS FLUSH AND FREE FROM VOIDS, RECESSES, AND RAMPED AREAS.

8 PROVIDE INTEGRAL FLASH COVE WALL, CONTINUOUS AROUND PERIMETER OF FLOORING MATERIAL, INCLUDING COVE FILLET SUPPORT STRIP AND TOP EDGE CAP FOR CONSTRUCT FLASHING.

9 CEMENT BASE IN ACCORDANCE WITH THE FLOORING MANUFACTURER'S INSTRUCTIONS. HEAT-WELD SEAMS AS SPECIFIED FOR THOSE ON THE FLOOR.

3.5 INSTALLATION OF ACCESSORIES

1 APPLY TOP SEAL WALL COVING, CASEWORK, AND OTHER PERMANENT FIXTURES IN AREAS WHERE TOP-SET BASE IS REQUIRED. INSTALL BASE IN LENGTHS AS LONG AS PRACTICAL, WITH INSIDE CORNERS FABRICATED FROM BASE MATERIALS THAT ARE MITERED OR COPED TIGHTLY BOND BASE TO VERTICAL SUBSTRATE WITH CONTINUOUS CONTACT.

2 HORIZONTAL AND VERTICAL SURFACES.

3 APPLY PLASTIC FILLER ALONG THE TOP EDGE OF THE RESILIENT WALL BASE OR INTEGRAL COVE CAP ON MASONRY SURFACES OR OTHER SIMILAR IRREGULAR SUBSTRATES.

3.6 CLEANING

1 PERFORM INITIAL AND ON-GOING MAINTENANCE ACCORDING TO HE LATEST EDITION OF ARMSTRONG FLOORING MAINTENANCE RECOMMENDATIONS AND PROCEDURES MANUAL, F-8663.

3.7 PROTECTION

1 PROTECT INSTALLED FLOORING AS RECOMMENDED BY THE FLOORING MANUFACTURER AGAINST DAMAGE FROM ROLLING LOADS, OTHER TRADES, OR THE PLACEMENT OF FIXTURES AND FURNISHINGS (SEE FINISHING THE JOB IN THE LATEST EDITION OF ARMSTRONG FLOORING GUARANTEED INSTALLATION SYSTEMS MANUAL, F-5061).

END OF SECTION

Division 4 - FINISHES

09.01.00 PAINTING

Part 1 - GENERAL

1 SECTION INCLUDES

1 LABOUR, PRODUCTS, EQUIPMENT AND SERVICES NECESSARY FOR PAINTING WORK IN ACCORDANCE WITH THE CONTRACT DOCUMENTS.

2 RE-PRIME REPAIRS.

10 COORDINATE WITH OTHER TRADES TO PREVENT:

1 DAMAGE, AND INADVERTENT ACTIVATION OF FIRE AND SMOKE DETECTORS

2 ODOR AND DUST DISTRIBUTION BY PERMANENT HVAC SYSTEMS INCLUDING FOULING OF DUCTS AND FILTERS.

11 FIELD-MIX PRODUCTS IN ACCORDANCE WITH MANUFACTURER'S WRITTEN INSTRUCTIONS.

3.3 APPLICATION

1 APPLY PAINTING SYSTEMS IN ACCORDANCE WITH THE MPT PAINTING SPECIFICATION MANUAL. APPLY EACH PRODUCT TO MANUFACTURER'S RECOMMENDED DRY FILM THICKNESS.

2 PERFORMANCE CRITERIA: COMPLIANCE WITH APPROPRIATE REFERENCE STANDARD, CHARACTERISTICS, LIMITATIONS.

2 PRODUCT TRANSPORTATION, STORAGE, HANDLING AND INSTALLATION REQUIREMENTS.

1.4 QUALITY ASSURANCE

1 FINISHING WORK: PERFORM WORK TO MPT REQUIREMENTS FOR PREMIUM GRADE.

2 INSTALLERS QUALIFICATIONS: PERFORM WORK OF THIS SECTION BY A COMPANY THAT IS A MEMBER IN GOOD STANDING OF MPT.

3 SUPERVISION: HAVE WORK SUPERVISED BY A FULL-TIME QUALIFIED PERSONNEL WHO HAS 10 YEARS MINIMUM EXPERIENCE ON CONTRACTS OF SIMILAR COMPLEXITY AND SCOPE.

1.5 DELIVERY, STORAGE, AND HANDLING

1 INSTALL CORRECT, SAFE TEMPORARY STORAGE FOR PAINT, THINNER, SOLVENTS, AND OTHER VOLATILE, CORROSIVE, HAZARDOUS, AND EXPLOSIVE MATERIALS IN ACCORDANCE WITH REQUIREMENTS OF AUTHORITIES HAVING JURISDICTION.

2 POST HAZARD WARNING SIGNAGE IN AREAS OF STORAGE AND MIXING. INSTALL AND MAINTAIN SUFFICIENT QUANTITY OF FIRE EXTINGUISHERS OF MINIMUM 9 KG CAPACITY, ACCESSIBLE IN EACH STORAGE MIXING AND STORAGE AREAS.

3 MAINTAIN STORAGE ENCLOSURES AT MINIMUM 10°C AMBIENT TEMPERATURE AND TO MANUFACTURER'S INSTRUCTIONS.

1.6 SITE CONDITIONS

1 APPLY CONDITIONS UNDER THE FOLLOWING CONDITIONS:

1 AS RECOMMENDED BY MANUFACTURER

2 MAINTAIN TEMPERATURE CONDITIONS INDICATED ABOVE FOR 24 HOURS BEFORE, DURING AND 24 HOURS AFTER PAINTING

3 INSTALL CLEAN PLYWOOD SHEETS TO PROTECT FLOORS AND WALLS IN STORAGE AND MIXING AREAS, FROM PAINT DRIPS, SPATTERS, AND SPILLS.

4 APPLY SUFFICIENT MASKING, CLEAN DRY CLOTHS, AND PROTECTIVE COVERINGS FOR FULL PROTECTION OF WORK NOT BEING PAINTED INCLUDING, BUT NOT LIMITED TO, THE FOLLOWING:

4 PAINT LIGHT COVES WHITE WHETHER A LIGHT LENS IS INSTALLED OR NOT, UNLESS OTHERWISE INDICATED.

5 PAINT INTERIOR COLUMNS TO MATCH WALLS OF ROOM.

6 MECHANICAL, ELECTRICAL AND OTHER PAINTING COORDINATION

1 PAINT MECHANICAL SERVICES IN ACCORDANCE WITH MECHANICAL IDENTIFICATION DIVISION 15

2 COORDINATE PAINTING OF PIPES, DUCTS, AND COVERINGS WITH THE WORK OF DIVISION 15

2 PRECEDE PIPE COLOUR BANDING, FLOW ARROWS, AND OTHER PIPE IDENTIFICATION LABELING INSTALLATION

3 PAINT EXPOSED CONDUIT, PIPES, HANGERS, DUCTWORK, GRILLES, GRATINGS, LOUVRES, ACCESS PANELS, FIRE HOSE CABINETS, REGISTERS, CONVECTOR AND RADIATOR COVERS, ENCLOSURES, AND OTHER MECHANICAL AND ELECTRICAL EQUIPMENT INCLUDING SWITCHES CONCEALED INSIDE CUPBOARD AND CABINET WORK, APPLY COLOR AND SHEN TO MATCH ADJACENT SURFACES, EXCEPT AS NOTED OTHERWISE.

4 PAINT PORTIONS OF SURFACES SUCH AS DUCT INTERIORS, PIPING, DUCTWORK, HANGERS, INSULATION, WALLS, AND SIMILAR ITEMS, VISIBLE THROUGH GRILLES, GRILLES, CONVECTOR COVERS ETC, MATTE BLACK IN COLOUR.

5 REMOVE THE FOLLOWING TO ACCOMMODATE PAINTING, CAREFULLY STORE, CLEAN, THEN REINSTALL ON COMPLETION OF EACH AREA AND WHEN DRY:

1 SWITCH AND RECEPTACLE PLATES, FITTINGS AND FASTENINGS, GRILLES, GRATINGS, LOUVRES, ACCESS PANELS, CONVECTOR COVERS, AND ENCLOSURES .

Part 2 - PRODUCTS

1 ALL MATERIALS UNDER WORK OF THIS SECTION ARE TO HAVE LOW VOC CONTENT LIMITS.

2 PRODUCTS IN ACCORDANCE WITH THE MPT PAINTING SPECIFICATION MANUAL.

3 MANUFACTURER'S PREMIUM GRADE, FIRST LINE PRODUCTS.

2 UNIFORM DISPERSION OF PIGMENT IN A HOMOGENEOUS MIXTURE.

3 READY-MIXED AND TINTED WHENEVER POSSIBLE.

2.1 MATERIALS

1 ACCEPTABLE MANUFACTURERS:

1 SIKAGARD® DURUPLAST® +50 N UV RESISTANT, HIGH SOLIDS, LOW ODOR, WATER-BASED, ANTI-MOLD AND ANTI-BACTERIAL EPOXY WAX COATING, INSTALLED PER MANUFACTURER'S INSTRUCTIONS.

2 PRIMER:

1 ACCEPTABLE MANUFACTURERS:

1 BRYWALL® SIKAGARD® DURUPLAST® PS ADHESION AND APPEARANCE IMPROVING PRIMER AND SEALER FOR SIKAGARD® DURUPLAST® FINISHES, INSTALLED PER MANUFACTURER'S INSTRUCTIONS.

2 BLOK® SIKAGARD® DURUPLAST® EE (FORMERLY DUCHON EE) WATER BASED EPOXY BLOCK-FILLER USED TO FILL SURFACE IRREGULARITIES ON SURFACE EXPOSED TO HIGH MOISTURE.

2.2 COLOUR SCHEDULE

1 WALLS AND CEILINGS TO MATCH ADJACENT ROOMS.

2 CONFORM TO GLOSS REFLECTANCE DEFINITIONS LISTED IN MPT SPECIFICATION MANUAL.

Part 3 - EXECUTION

3.1 EXAMINATION

1 VERIFY CONDITION OF PREVIOUSLY INSTALLED WORK UPON WHICH THIS SECTION DEPENDS. REPAIR DEFECTS TO SATISFACTORY CONSULTANT. COMMENCEMENT OF WORK MEANS ACCEPTANCE OF EXISTING CONDITIONS.

3.2 PREPARATION

1 GENERAL:

1 CLEAN SUBSTRATE SURFACES FREE FROM DUST, GREASE, SOILING, OR EXTRANEOUS MATERIAL, WHICH ARE DETRIMENTAL TO FINISH.

2 PATCH, REPAIR, AND SMOOTHEN MOIST SUBSTRATE DEFECTS AND DEFICIENCIES (E.G. MACHINE, TOOL, AND SAND PAPER MARKS, SHALLOW GULCHES, MARKS, AND NBS).

3 CLEAN, SWEEP, AND VACUUM FLOORS AND SURFACES TO BE PAINTED, OF DEBRIS AND JUST FREE PRIOR TO PAINTING.

4 REFER TO MPT PAINTING SPECIFICATION MANUAL FOR SURFACE PREPARATION REQUIREMENTS OF SUBSTRATES NOT LISTED HERE.

2 WHERE FINISH HARDWARE HAS BEEN INSTALLED REMOVE, STORE, RE-INSTALL, FINISH HARDWARE, TO ACCOMMODATE PAINTING. DO NOT CLEAN HARDWARE WITH SOLVENT THAT WILL REMOVE PERMANENT LACQUER OR FINISHES.

3 AKAALI CONTENT TESTS AND NEUTRALIZATION

1 TEST FOR AND NEUTRALIZE PER MANUFACTURER'S RECOMMENDATIONS.

4 SUBSTRATE MOISTURE TESTS:

1 TEST FOR MOISTURE AND REMEDIATE AS RECOMMENDED BY MANUFACTURER

5 MILDWEY REMOVAL: SCRUB WITH SOLUTION OF TRISODIUM PHOSPHATE AND SODIUM HYDROXIDE (CAUSTIC BLACK), RINSE WITH WATER, AND ALLOW TO DRY COMPLETELY.

7 METAL FABRICATIONS (EXISTING) SCRUB AND EITHER HAND OR POWER WIRE BRUSH SURFACES TO REMOVE MILL AND SCALE.

8 FACTORY PRIMED SURFACES

1 TOUCH UP DAMAGED AREAS.

2 CLEAN AS REQUIRED FOR TOP COAT.

5 GYPSUM BOARD

1 APPLY PRIMER/SEALER PAINT TO REVEAL DEFECTS AND DEFICIENCIES AND TO EQUALIZE ABSORPTION AREAS.

2 COORDINATE REPAIRS AND TOUCH-UPS WITH THE RESPONSIBLE TRADE.

3 RE-PRIME REPAIRS.

10 COORDINATE WITH OTHER TRADES TO PREVENT:

1 DAMAGE, AND INADVERTENT ACTIVATION OF FIRE AND SMOKE DETECTORS

2 ODOR AND DUST DISTRIBUTION BY PERMANENT HVAC SYSTEMS INCLUDING FOULING OF DUCTS AND FILTERS.

11 FIELD-MIX PRODUCTS IN ACCORDANCE WITH MANUFACTURER'S WRITTEN INSTRUCTIONS.

3.3 APPLICATION

1 APPLY PAINTING SYSTEMS IN ACCORDANCE WITH THE MPT PAINTING SPECIFICATION MANUAL. APPLY EACH PRODUCT TO MANUFACTURER'S RECOMMENDED DRY FILM THICKNESS.

2 PERFORMANCE CRITERIA: COMPLIANCE WITH APPROPRIATE REFERENCE STANDARD, CHARACTERISTICS, LIMITATIONS.

2 PRODUCT TRANSPORTATION, STORAGE, HANDLING AND INSTALLATION REQUIREMENTS.

1.4 QUALITY ASSURANCE

1 FINISHING WORK: PERFORM WORK TO MPT REQUIREMENTS FOR PREMIUM GRADE.

2 INSTALLERS QUALIFICATIONS: PERFORM WORK OF THIS SECTION BY A COMPANY THAT IS A MEMBER IN GOOD STANDING OF MPT.

3 SUPERVISION: HAVE WORK SUPERVISED BY A FULL-TIME QUALIFIED PERSONNEL WHO HAS 10 YEARS MINIMUM EXPERIENCE ON CONTRACTS OF SIMILAR COMPLEXITY AND SCOPE.

1.5 DELIVERY, STORAGE, AND HANDLING

1 INSTALL CORRECT, SAFE TEMPORARY STORAGE FOR PAINT, THINNER, SOLVENTS, AND OTHER VOLATILE, CORROSIVE, HAZARDOUS, AND EXPLOSIVE MATERIALS IN ACCORDANCE WITH REQUIREMENTS OF AUTHORITIES HAVING JURISDICTION.

2 POST HAZARD WARNING SIGNAGE IN AREAS OF STORAGE AND MIXING. INSTALL AND MAINTAIN SUFFICIENT QUANTITY OF FIRE EXTINGUISHERS OF MINIMUM 9 KG CAPACITY, ACCESSIBLE IN EACH STORAGE MIXING AND STORAGE AREAS.

3 MAINTAIN STORAGE ENCLOSURES AT MINIMUM 10°C AMBIENT TEMPERATURE AND TO MANUFACTURER'S INSTRUCTIONS.

1.6 SITE CONDITIONS

1 APPLY CONDITIONS UNDER THE FOLLOWING CONDITIONS:

1 AS RECOMMENDED BY MANUFACTURER

2 MAINTAIN TEMPERATURE CONDITIONS INDICATED ABOVE FOR 24 HOURS BEFORE, DURING AND 24 HOURS AFTER PAINTING

3 INSTALL CLEAN PLYWOOD SHEETS TO PROTECT FLOORS AND WALLS IN STORAGE AND MIXING AREAS, FROM PAINT DRIPS, SPATTERS, AND SPILLS.

4 APPLY SUFFICIENT MASKING, CLEAN DRY CLOTHS, AND PROTECTIVE COVERINGS FOR FULL PROTECTION OF WORK NOT BEING PAINTED INCLUDING, BUT NOT LIMITED TO, THE FOLLOWING:

4 PAINT LIGHT COVES WHITE WHETHER A LIGHT LENS IS INSTALLED OR NOT, UNLESS OTHERWISE INDICATED.

5 PAINT INTERIOR COLUMNS TO MATCH WALLS OF ROOM.

6 MECHANICAL, ELECTRICAL AND OTHER PAINTING COORDINATION

1 PAINT MECHANICAL SERVICES IN ACCORDANCE WITH MECHANICAL IDENTIFICATION DIVISION 15

2 COORDINATE PAINTING OF PIPES, DUCTS, AND COVERINGS WITH THE WORK OF DIVISION 15

2 PRECEDE PIPE COLOUR BANDING, FLOW ARROWS, AND OTHER PIPE IDENTIFICATION LABELING INSTALLATION

3 PAINT EXPOSED CONDUIT, PIPES, HANGERS, DUCTWORK, GRILLES, GRATINGS, LOUVRES, ACCESS PANELS, FIRE HOSE CABINETS, REGISTERS, CONVECTOR AND RADIATOR COVERS, ENCLOSURES, AND OTHER MECHANICAL AND ELECTRICAL EQUIPMENT INCLUDING SWITCHES CONCEALED INSIDE CUPBOARD AND CABINET WORK, APPLY COLOR AND SHEN TO MATCH ADJACENT SURFACES, EXCEPT AS NOTED OTHERWISE.

4 PAINT PORTIONS OF SURFACES SUCH AS DUCT INTERIORS, PIPING, DUCTWORK, HANGERS, INSULATION, WALLS, AND SIMILAR ITEMS, VISIBLE THROUGH GRILLES, GRILLES, CONVECTOR COVERS ETC, MATTE BLACK IN COLOUR.

5 REMOVE THE FOLLOWING TO ACCOMMODATE PAINTING, CAREFULLY STORE, CLEAN, THEN REINSTALL ON COMPLETION OF EACH AREA AND WHEN DRY:

1 SWITCH AND RECEPTACLE PLATES, FITTINGS AND FASTENINGS, GRILLES, GRATINGS, LOUVRES, ACCESS PANELS, CONVECTOR COVERS, AND ENCLOSURES .

Part 2 - PRODUCTS

1 ALL MATERIALS UNDER WORK OF THIS SECTION ARE TO HAVE LOW VOC CONTENT LIMITS.

2 PRODUCTS IN ACCORDANCE WITH THE MPT PAINTING SPECIFICATION MANUAL.

3 MANUFACTURER'S PREMIUM GRADE, FIRST LINE PRODUCTS.

2 UNIFORM DISPERSION OF PIGMENT IN A HOMOGENEOUS MIXTURE.

3 READY-MIXED AND TINTED WHENEVER POSSIBLE.

2.1 MATERIALS

1 ACCEPTABLE MANUFACTURERS:

1 SIKAGARD® DURUPLAST® +50 N UV RESISTANT, HIGH SOLIDS, LOW ODOR, WATER-BASED, ANTI-MOLD AND ANTI-BACTERIAL EPOXY WAX COATING, INSTALLED PER MANUFACTURER'S INSTRUCTIONS.

2 PRIMER:

1 ACCEPTABLE MANUFACTURERS:

1 BRYWALL® SIKAGARD® DURUPLAST® PS ADHESION AND APPEARANCE IMPROVING PRIMER AND SEALER FOR SIKAGARD® DURUPLAST® FINISHES, INSTALLED PER MANUFACTURER'S INSTRUCTIONS.

2 BLOK® SIKAGARD® DURUPLAST® EE (FORMERLY DUCHON EE) WATER BASED EPOXY BLOCK-FILLER USED TO FILL SURFACE IRREGULARITIES ON SURFACE EXPOSED TO HIGH MOISTURE.

2.2 COLOUR SCHEDULE

1 WALLS AND CEILINGS TO MATCH ADJACENT ROOMS.

2 CONFORM TO GLOSS REFLECTANCE DEFINITIONS LISTED IN MPT SPECIFICATION MANUAL.

Part 3 - EXECUTION

3.1 EXAMINATION

1 VERIFY CONDITION OF PREVIOUSLY INSTALLED WORK UPON WHICH THIS SECTION DEPENDS. REPAIR DEFECTS TO SATISFACTORY CONSULTANT. COMMENCEMENT OF WORK MEANS ACCEPTANCE OF EXISTING CONDITIONS.

3.2 PREPARATION

1 GENERAL:

1 CLEAN SUBSTRATE SURFACES FREE FROM DUST, GREASE, SOILING, OR EXTRANEOUS MATERIAL, WHICH ARE DETRIMENTAL TO FINISH.

2 PATCH, REPAIR, AND SMOOTHEN MOIST SUBSTRATE DEFECTS AND DEFICIENCIES (E.G. MACHINE, TOOL, AND SAND PAPER MARKS, SHALLOW GULCHES, MARKS, AND NBS).

3 CLEAN, SWEEP, AND VACUUM FLOORS AND SURFACES TO BE PAINTED, OF DEBRIS AND JUST FREE PRIOR TO PAINTING.

4 REFER TO MPT PAINTING SPECIFICATION MANUAL FOR SURFACE PREPARATION REQUIREMENTS OF SUBSTRATES NOT LISTED HERE.

2 WHERE FINISH HARDWARE HAS BEEN INSTALLED REMOVE, STORE, RE-INSTALL, FINISH HARDWARE, TO ACCOMMODATE PAINTING. DO NOT CLEAN HARDWARE WITH SOLVENT THAT WILL REMOVE PERMANENT LACQUER OR FINISHES.

3 AKAALI CONTENT TESTS AND NEUTRALIZATION

1 TEST FOR AND NEUTRALIZE PER MANUFACTURER'S RECOMMENDATIONS.

4 SUBSTRATE MOISTURE TESTS:

1 TEST FOR MOISTURE AND REMEDIATE AS RECOMMENDED BY MANUFACTURER

5 MILDWEY REMOVAL: SCRUB WITH SOLUTION OF TRISODIUM PHOSPHATE AND SODIUM HYDROXIDE (CAUSTIC BLACK), RINSE WITH WATER, AND ALLOW TO DRY COMPLETELY.

7 METAL FABRICATIONS (EXISTING) SCRUB AND EITHER HAND OR POWER WIRE BRUSH SURFACES TO REMOVE MILL AND SCALE.

8 FACTORY PRIMED SURFACES

1 TOUCH UP DAMAGED AREAS.

2 CLEAN AS REQUIRED FOR TOP COAT.

MSC

STAINLESS STEEL MILLWORK SPECIFICATIONS

MATERIAL

CABINERY FABRICATED FROM 304 STAINLESS STEEL SHEET, (1/8" STAINLESS STEEL SHEET) SHALL SUPPORT A MINIMUM OF 100 LBS. CONFORMING TO ASTM A940. ALL EXPOSED SURFACES POLISHED A NO. 4 BRUSHED SATIN FINISH (150/180 GRIT)

PERFORMANCE REQUIREMENTS

CASEWORK AND COMPONENTS SHALL WITHSTAND THE FOLLOWING MINIMUM LOADS WITHOUT DAMAGE TO COMPONENTS OR CASEWORK OPERATIONS:

A. BASE CABINETS SHALL SUPPORT A MINIMUM OF 500 LBS. PER LINEAL FOOT SUSPENDED ACROSS CABINET ENDS

B. DRAWERS WITH CASES SHALL SUPPORT A MINIMUM OF 100 LBS.

C. HANGING WALL CASES SHALL SUPPORT A MINIMUM OF 300 LBS.

D. SHELVES OVER BASE CASES, AND TALL CASES SHALL SUPPORT A MINIMUM OF 100 LBS.

SHOP DRAWINGS

SUBMIT COMPLETE SHOP DRAWINGS SHOWING ALL CASEWORK, ELEVATIONS, PLANS, CROSS SECTIONS AND INSTALLATION DETAILS.

SAMPLES

SUBMIT ONE TYPICAL WALL AND BASE UNIT FOR ARCHITECT AND OWNER REVIEW AND ACCEPTANCE. THE SAMPLE, IF APPROVED, MAY BE INCORPORATED INTO THE PROJECT.

DELIVERY, STORAGE AND HANDLING

SUBMIT ONE TYPICAL WALL AND BASE UNIT FOR ARCHITECT AND OWNER REVIEW AND ACCEPTANCE. THE SAMPLE, IF APPROVED, MAY BE INCORPORATED INTO THE PROJECT.

COMPLY WITH MANUFACTURER'S ORDERING INSTRUCTIONS AND LEAD TIMES.

SCHEDULE DELIVERY OF CASEWORK AND EQUIPMENT SO THAT SPACES ARE SUFFICIENTLY CLEANED TO ALLOW FOR INSTALLATION IMMEDIATELY FOLLOWING DELIVERY.

PROTECT FINISHED SURFACES FROM SOILING OR DAMAGE DURING HANDLING AND INSTALLATION.

COVER WORKING SURFACES WITH CARDBOARD. MARK IN LARGE LETTERING "NO STANDING"

DESIGN REQUIREMENTS

MODULAR CABINERY SHALL BE OF MODERN SLM LINE STYLING WITH 1" WIDE VERTICAL STILES AND HORIZONTAL INTERMEDIATE RAILS.

TOP QUALITY CABINERY TO BE ENSURED BY THE USE OF THE PROPER MACHINERY, TOOLS, DIES, AND SKILLED WORKMANSHIP IN ACCORDANCE WITH CURRENTLY ESTABLISHED STANDARDS OF THE LABORATORY FURNISHINGS INDUSTRY.

ALL CABINETS AND COMPONENTS ARE TO BE ASSEMBLED UTILIZING JOBS AND FIXTURES AS SPECIFIED BY THE ARCHITECT.

INTERCHANGEABILITY OF COMPONENTS BETWEEN CABINETS OF LIKE SIZE.

CONSTRUCTION

CABINET

CABINET BACKS, END PANELS, UPRIGHTS, AND THE BASE FABRICATION FROM 18 GAUGE STAINLESS STEEL.

TOP AND INTERMEDIATE HORIZONTAL RAILS AND REAR TRIANGULAR GUSSETS FABRICATED FROM 18 GAUGE STAINLESS STEEL.

L" SHAPED FRONT CORNER REINFORCEMENT GUSSETS AND HINGE REINFORCEMENTS FABRICATED FROM 14 GAUGE STAINLESS STEEL.

BOTTOM TRIANGULAR LEVELER GUSSETS FABRICATED FROM 11 GAUGE STAINLESS STEEL.

ALL CABINETS SHALL HAVE A CLEANABLE, SMOOTH INTERIOR, FRONT AND REAR REINFORCING MEMBERS, AND CHANNEL SHAPED UPRIGHTS SHALL BE MODELED FULL HEIGHT.

FRONT FACE JOINTS FULLY WELDED, GROUNDED AND POLISHED TO PROVIDE A CONTINUOUS FLAT FRONT PLANE FREE OF CREVICES.

FRONT FACE OF DOORS, DRAWERS, AND PANELS SHALL ALIGN FLUSH WITH CABINET FRONT, AND SHALL NOT OVERLAP CASE ENDS OR TOP AND BOTTOM RAILS.

CABINET OPENINGS FOR DOORS AND DRAWERS RABBETTED TO PROVIDE A DUST RESISTANT INTERIOR.

BASE CABINETS FURNISHED WITH REMOVABLE BACK PANEL FOR ACCESS TO STOPS, VALVES, AND SERVICE LINES. NO BACK PANEL FURNISHED ON CABINETS WITH DRAWERS ONLY.

WALL CABINETS FURNISHED WITH FIXED BACK PANEL.

BASE CABINETS AND WALL CABINETS UP TO 48" IN WIDTH DOUBLE-HINGED DOORS, FURNISHED WITHOUT VERTICAL CENTER POST TO ALLOW FULL ACCESS TO CABINET INTERIOR.

CONCEALED HORIZONTAL RAILS FURNISHED BENEATH ALL DRAWERS, WITH OR WITHOUT LOCKS.

VERTICAL STILES SHALL BE PROVIDED BETWEEN ALL DOORS AND DRAWERS, OR TIERS OF DRAWERS OF ALL SECTIONAL CABINETS.

ALL FLOOR-MOUNTED CABINETS SUPPORTED ON (4) ADJUSTABLE LEVELING GLIDES.

BOTTOM SHELF OF BASE CABINETS RECESSED, WITH SIDES TURNED UP TO CONTAIN SPILLS WITHIN CABINET.

BOTTOM OF BASE CABINETS SHALL BE REMOVABLE FOR CLEANABILITY AND ACCESS TO LEVELING GLIDES. OPEN OR PLUGGED HOLES IN BOTTOM OF CABINETS FOR ACCESS TO LEVELING GLIDES ARE NOT ACCEPTABLE.

TOP OF THE TOP CASE BELOW BOTTOM CABINET CLOSED AND FINISHED WITH TRIM.

FRONT CORNERS OF CABINETS REINFORCED WITH L" SHAPED REINFORCEMENT GUSSETS.

FRONT TOP RAILS ON CABINETS OVER 30" IN WIDTH REINFORCED WITH ADDITIONAL STAINLESS STEEL ANGLE SHAPE FOR GREATER STRENGTH AND RIGIDITY.

DOORS

ALL DOORS SHALL CLOSE AGAINST RUBBER BUMPERS.

ALL HINGED DOORS LESS THAN 36" IN HEIGHT SHALL BE HUNG BY A MINIMUM OF TWO (2) HINGES. DOORS GREATER THAN 36" IN HEIGHT SHALL BE HUNG WITH A MINIMUM OF THREE (3) HINGES.

HINGED AND SLIDING SILD PANEL DOORS

1 1/2" THICK, DOUBLE WALL TELESCOPING BOX CONSTRUCTION, WITH SOUND DEADENED INTERIOR.

EXTERIOR PAN FABRICATED FROM 18 GAUGE STAINLESS STEEL.

INTERIOR PAN FABRICATED FROM 20 GAUGE STAINLESS STEEL.

HINGES ATTACHED WITH STAINLESS STEEL SCREWS TO 14 GAUGE STEEL REINFORCING PLATES IN CASE AND DOOR. HINGES WELDED TO DOORS OR CABINET BODIES ARE UNACCEPTABLE.

DRAWERS

DRAWER FRONTS 3/4" THICK, 20 GAUGE STAINLESS STEEL TELESCOPING BOX CONSTRUCTION, SOUND DEADENING INTERIOR.

BOTTOMS AND SIDES OF DRAWER FORMED FROM SINGLE SHEET OF 20 GAUGE STAINLESS STEEL, COVED AT BOTTOM. BODY SPOT WELDED TO DRAWER FRONT.

DRAWER SHALL CLOSE AGAINST RUBBER BUMPERS.

DRAWER SUSPENSION - TYPICAL, 100 LB. CAPACITY, ZINC-PLATED HEAVY DUTY FULL - EXTENSION TELESCOPING SLIDES WITH POLYMER BALL BEARINGS.

ALL DRAWERS OVER 24" IN WIDTH FURNISHED WITH (2) DRAWER PULLS.

SHELVES

ADJUSTABLE INTERMEDIATE SHELVES FABRICATED FROM 20 GAUGE STAINLESS STEEL, WITH FRONT AND REAR EDGES FORMED DOWN AND BACK 2" ENDS FORMED DOWN 2" FOR STIFFNESS.

SHELVES OVER 36" LONG REINFORCED WITH STAINLESS STEEL HAT CHANNEL STIFFENER RUNNING LONGITUIONALLY ALONG CENTER OF SHELF.

CLOSURE PANELS, SCRIBES, AND FILLERS

CLOSURE PANELS, SCRIBES AND FILLERS FORMED FROM 20 GAUGE STAINLESS STEEL SHEET, SECURED TO CABINERY WITHOUT EXPOSED FASTENERS.

HARDWARE

DOOR HINGES - 2 1/2" LONG STAINLESS STEEL FIVE (5) KNUCKLE INSTITUTIONAL TYPE - ZIN PLATED WITH ROUNDED ENDS.

DOOR CATCHES - ZIN PLATED ADJUSTABLE NYLON ROLLER CATCH.

HINGED DOOR AND DRAWER PULLS - SATIN CHROME PLATED WIRE PULL, ATTACHED WITH SCREWS IN MINIMUM 4" CENTER.

D