

Lakehead University

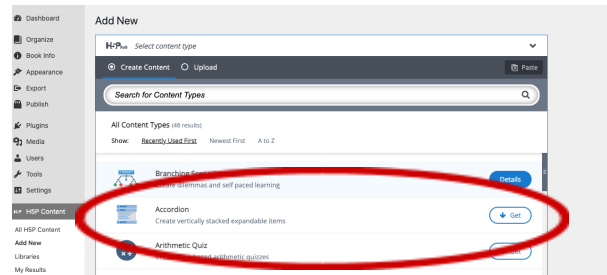
Creating h5p Branching Scenario Guide

INTRODUCTION: At its most simple, a branching scenario is an interactive tool that helps demonstrate a decision tree by incorporating a variety of different media types. With the framework of the **h5p Branching Scenario** option you can build your scenario using text, images, videos, interactive videos that have knowledge check and hotspots and images with hotspots.

STEP 1: Log in to h5p either through <https://h5pstudio.ecampusontario.ca/> or through Pressbooks <https://ecampusontario.pressbooks.pub/>

STEP 2: Once in the h5p studio choose **CREATE** from the right on the top menu bar.

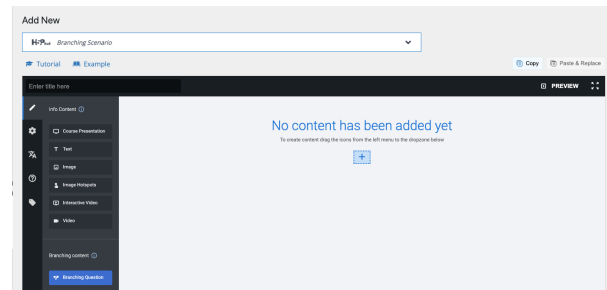
From the menu on the left select the type of h5p media you would like to create. In this case it is a **BRANCHING SCENARIO**



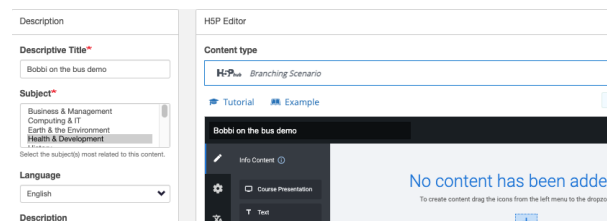
STEP 3: This is now your working canvas. From the menu on the left you can drag and drop all the different types of media you want to use.

You can see TEXT, IMAGE, IMAGE HOTSPOT, INTERACTIVE VIDEO or VIDEO.

Finally you can see in blue **Branching Questions** We will get to these soon.



To start this example, we will add the name of the scenario... "Bobbi on the bus". Next, we will need to begin to build, by adding content to the canvas space.



Lakehead
UNIVERSITY

Teaching
Commons

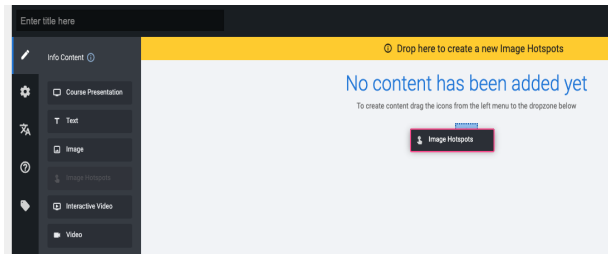


Lakehead University

Creating h5p Branching Scenario Guide

STEP 4: To start we want to add an image. I will then add some hotspots for participants to click on.

SELECT *Image hotspots* from the menu on the left and drag it into your content canvas. We will add the *hotspots* in a moment.

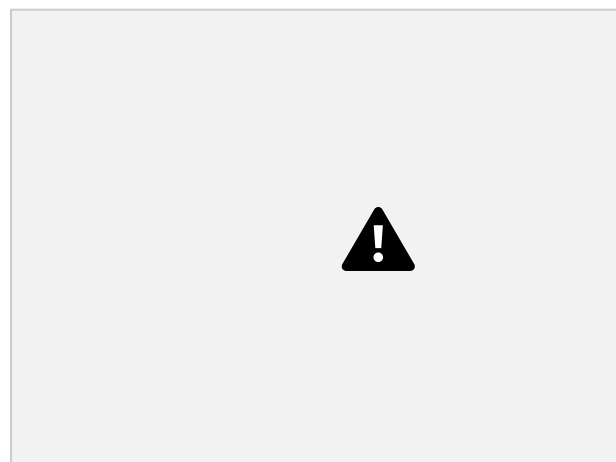


STEP 5: Choose an image you want to use. And **UPLOAD** it. Fill in the required text prompts for the names. We have uploaded a bus image. We named it *“Bobbi on the way to take a test.”*

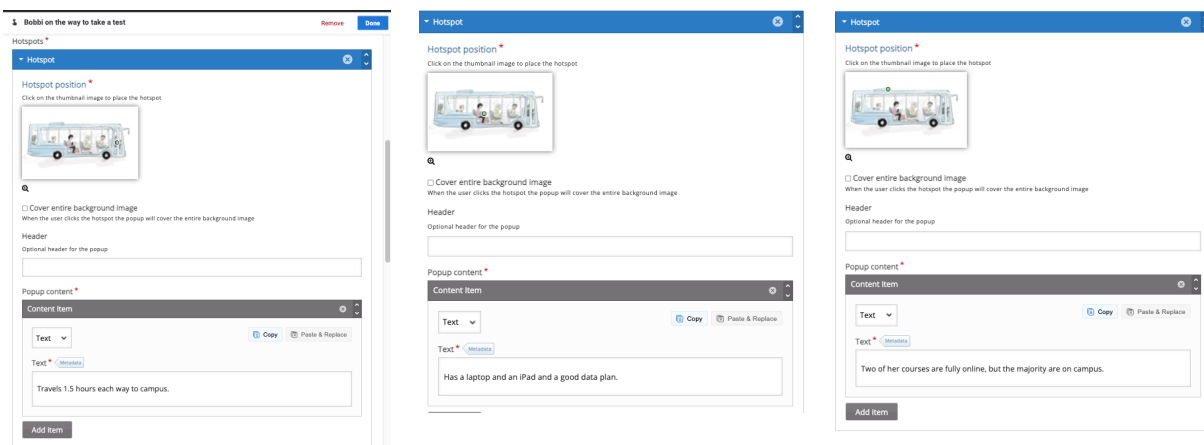
TO ADD HOTSPOTS:

Scroll down (using the scroll slider on the right) in the image window.

There you will see the option to add HOTSPOTS. We will be adding 3 Hotspots.



Choose where you would like the HOTSPOTS to appear on the image. Then open the **GREY** dropdown to add content for each HOTSPOT. Add text that you want to appear when that hotspot is **CLICKED**.



Lakehead
UNIVERSITY

Teaching
Commons



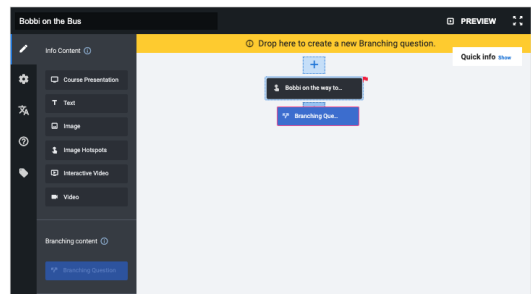
Lakehead University

Creating h5p Branching Scenario Guide

STEP 5: Now it is time to add a **Branching Question**.

From the menu on the left, drag the **Branching Question** option onto the canvas, below the image hotspot you already made.

Next you will need to fill out the details about what the questions are and what happens when someone chooses each option.



First, you need to add your **1st Option and QUESTION**. This starts your decision tree.

Next you will need to **ADD ALTERNATIVE**. This will open up the choices participants can make. In the **TEXT** box add choice 1. Next, in the **GREY** dropdown, (**ADVANCED BRANCHING OPTIONS**) choose what you would like to happen when someone chooses option 1. In this case we have selected “*jump to another branch*”. We have then indicated which “branch” it will go to - effectively taking them back to the first image hotspot.

IMPORTANT NOTE:

More than just driving users forward or backwards, it is **critical** to provide information to help participants make their choices...Both correct or incorrect ones. So further down in the **Advanced Branching Options** there is another dropdown for **FEEDBACK**.

We have given the “feedback” a title and then included text, offering a reason why this choice might not be the best choice available. Participants will see this prompt before they are directed to go back to the first hotspot image and start again.

Do this for each available alternative.

A screenshot of the H5P editor interface showing the 'Advanced Branching Options' section. The form includes fields for 'Question', 'Available alternatives', 'Text', 'Advanced branching options', 'Feedback', 'Feedback title', 'Feedback text', and 'Feedback image'. The 'Advanced branching options' section is expanded, showing a dropdown for 'Special action if selected' set to 'Jump to another branch', and a dropdown for 'Select a branch to jump to' set to 'Bobbi on the way to take a test (Image Hotspots)'. The 'Feedback' section is also expanded, showing a 'Feedback title' field with the text 'On-campus access...Bobbi's out-of-class study is limited' and a 'Feedback text' field with a paragraph of text.

Lakehead
UNIVERSITY

Teaching
Commons

Lakehead University

Creating h5p Branching Scenario Guide

In this example, we have added a second alternative with our referred answer.

When chosen, the participant will be guided to a NEW Image hotspot with new text and information.

We have provided Feedback information for participants to help them understand why their choice was preferred.

MAKE SURE TO SAVE by clicking DONE for each step!

Help Bobbi study efficiently

Remove Done

All questions asked of instructor and element...

Text *

All questions asked of instructor and elements of the pre-test lecture are provided in the LMS as a Fr

Advanced branching options

Special action if selected

Jump to another branch

Select a branch to jump to *

Bobbi heading to campus to meet her team (Image Hotspots)

Feedback

It is recommended to provide feedback that motivates and also provides guidance. Leave all fields empty if you don't want the user to get feedback after choosing this alternative/viewing this content.

Feedback title

Access in transit

Feedback text

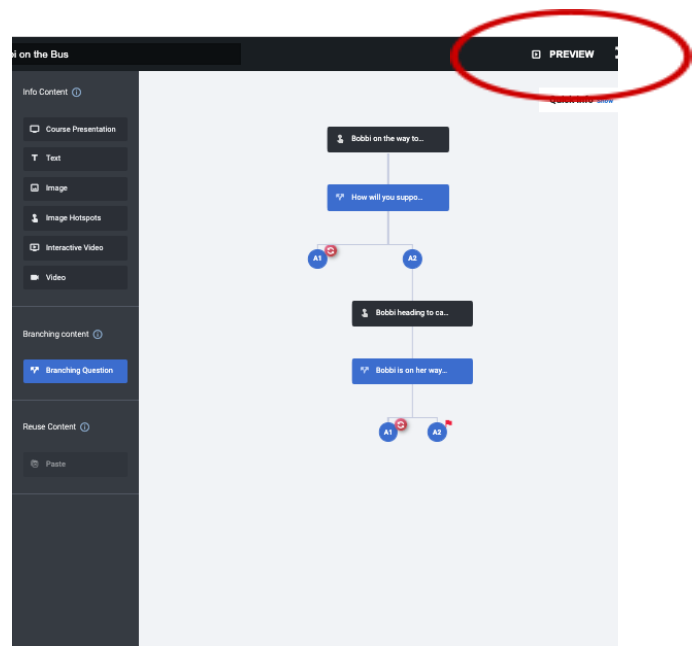
By having your course resources available in a digital space Bobbi can access from her multiple devices (laptop, tablet, phone) in an accessible format. Bobbi is able to engage with the content when she is ready to learn. She can review resources such as Powerpoint slides (with Notes) or posted videos. She can access study aids created and shared by her and her peers. She is able to gain access to the class resources through her devices at a time that fits her schedule. This will greatly improve her confidence walking into the test session. Ultimately providing flexibility so that Bobbi can study at her convenience helps her make efficient use of her time.

Finally, here you can see the “map” for the finished Branching Scenario.

This diagram shows the flow of the interactive experience, as participants make their choices.

It is important to **PREVIEW** a number of times during the build process, in order to get the flow right.

Good Luck!



Lakehead
UNIVERSITY

Teaching
Commons

