



Developing the

---

# **EAGLE'S NEST MINE**

in challenging times

**THE ROLE OF GOVERNMENT POLICY IN SUSTAINABLE MINING  
DEVELOPMENT**

CESME Conference  
*Lakehead University*  
*December 6, 2013*

The following presentation may include certain “forward-looking statements” within the meaning of the United States Private Litigation Reform Act of 1995 and applicable Canadian Securities Laws. All statements, other than statements of historical fact, included in the presentation, including, without limitation, statements regarding potential mineralization and reserves, exploration results, and future plans and objectives of Noront, are forward-looking statements.

Words such as “expect”, “anticipate”, “estimate”, “may”, “will”, “should”, “intend”, “believe” and other similar expressions are forward-looking statements. Forward-looking statements are not guarantees of future results and conditions but rather reflect our current views with respect to future events and are subject to risks, uncertainties, assumptions and other factors, and actual results and future events could differ materially from those anticipated in such statements. There can be no assurance that such forward-looking statements will prove to be accurate. We base our forward-looking statements on information currently available to us and we do not assume any obligation to update them, except as required by law.

An additional Cautionary Note to Investors – In the event that we use certain terms in this presentation, such as “resource”, “measured resource”, “indicated resource” and “inferred resource”. U.S investors are cautioned that, while such terms are recognized and required by Canadian Securities Laws, the United States Securities and Exchange Commission does not recognize them. Under U.S. standards, mineralization may not be classified as a “reserve” unless the determination has been made that the mineralization could be economically and legally produced or extracted at the time the reserve determination has been made. U.S. investors should not assume that all or any part of measured or indicated resources will ever be converted into reserves. In addition, “inferred resources” have a greater amount of uncertainty as to their existence and as to whether they can be mined legally or economically. Accordingly, information concerning descriptions of mineralization in this presentation may not be comparable to information made public by companies that are subject to the SEC’s Industry Guide 7.

All of the scientific and technical information contained herein has been reviewed and/or prepared by a “qualified person” within the meaning of National Instrument 43-101 - Standards of Disclosure for Mineral Projects. For details of the company’s procedures and policies for data verification, the reader is referred to the company’s press releases available on the company’s website at [www.norontresources.com](http://www.norontresources.com) or on SEDAR at [www.sedar.com](http://www.sedar.com).

- Noront Resources is an innovative junior mining company working in the James Bay Lowlands in the region named the “Ring of Fire”
  - Over \$200 million spent on exploration to date
- We are listed on the Toronto Stock Exchange Venture (TSX-V) Exchange with the symbol; NOT and are a publicly traded company
- Head Office is located in Toronto with a Satellite Office in Thunder Bay
- Noront wants to be the next major mining company operating in Canada
- Major Shareholders:
  - Resource Capital Fund – 20%
  - Baosteel – 9%

- Discovery made – 2007
- Exploration Agreements with Webequie and Marten Falls 2009
- Additional community agreements; Webequie and Marten Falls – 2010
- Completion of project description – 2011
- Completion of Feasibility report – 2012
- MOU signing with Aroland FN – 2013
- Submission of EA/EIS – December 2013

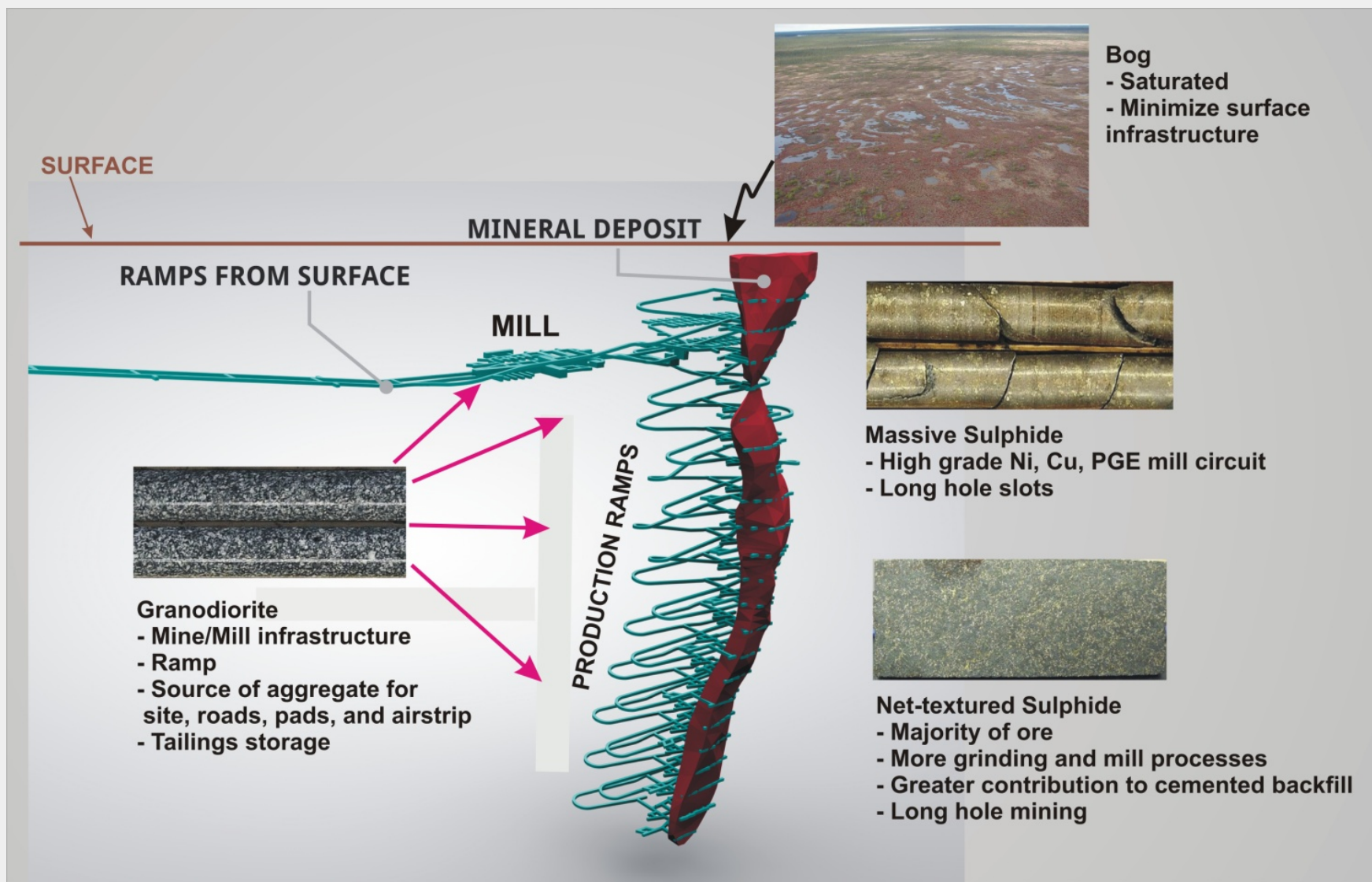
## EAGLE'S NEST LOCATION

- The Ring of Fire is located in the Nishnawbe Aski Nation (NAN) territory
- 530 km north east of Thunder Bay
- 130 km north of Marten Falls
- 80 km east of Webequie First Nation
- The closest non-FN community is Pickle Lake 300 km away

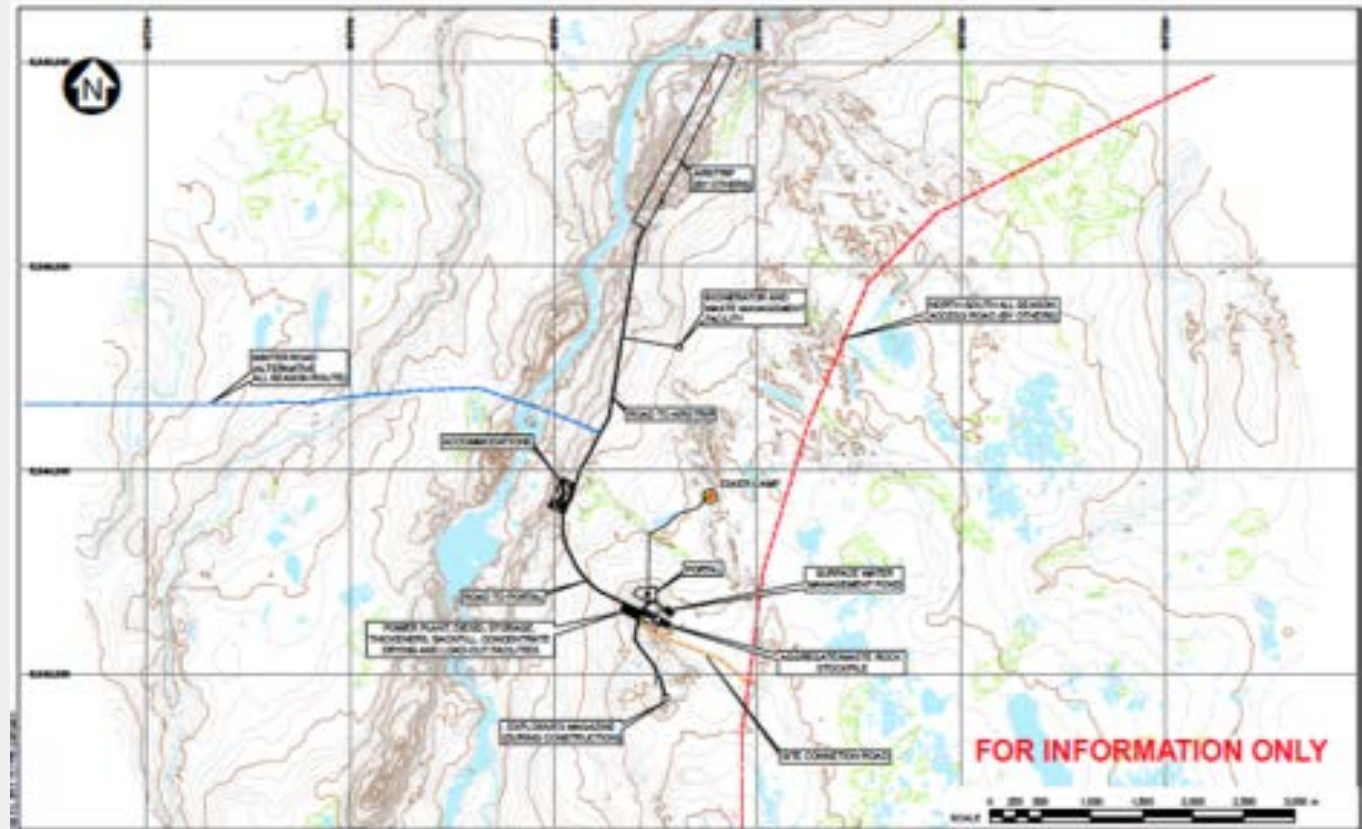




# WHAT IS EAGLE'S NEST MINE?



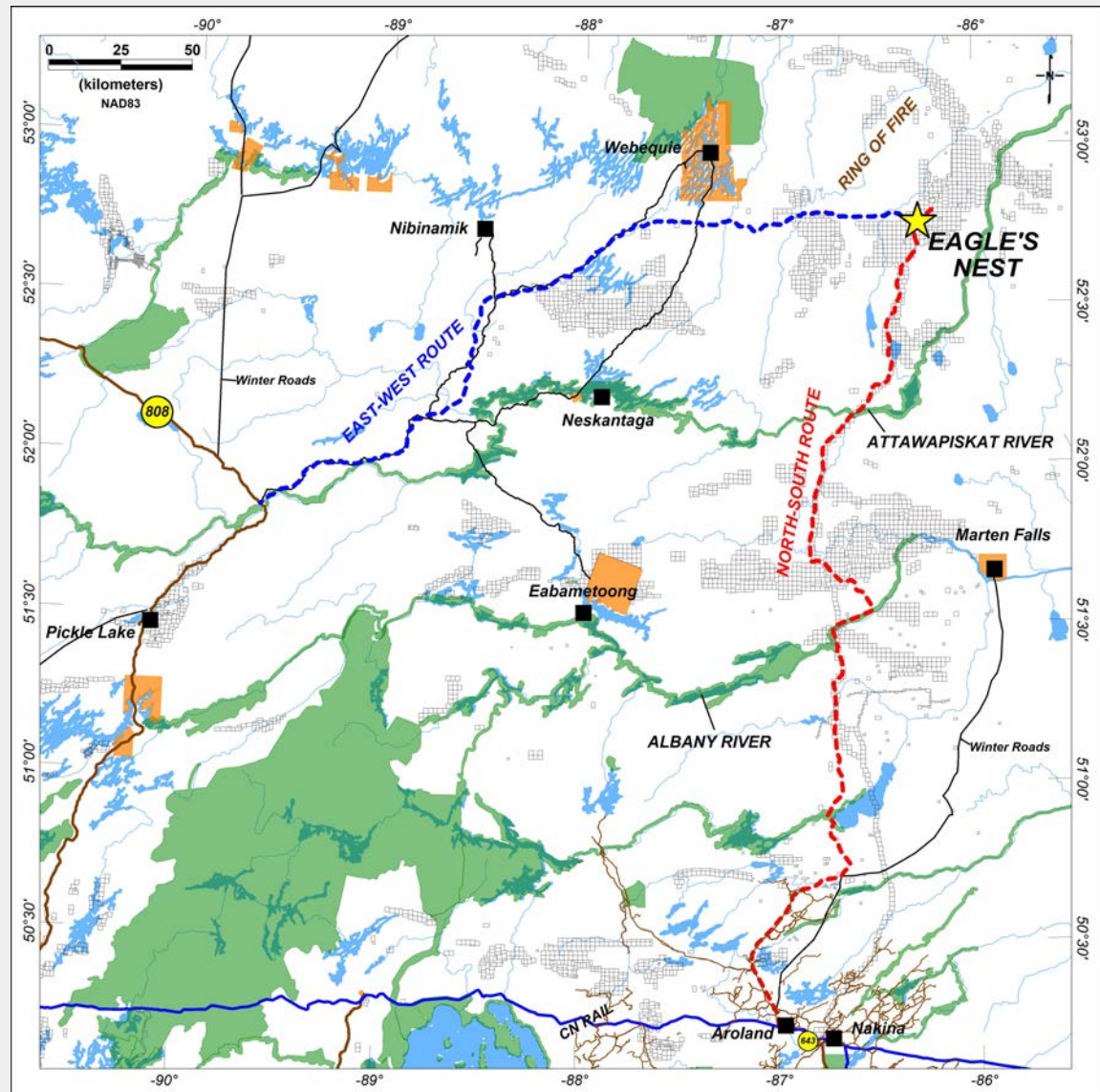
- Airstrip
- Accommodations and offices
- Mine Portal
- Diesel generators (at start)
- Concentrate Truck Loading
- Explosives Storage






# ROAD – Challenge and Opportunity

- Upgrade the current E-W road
- Extend road to the Project site
- Haulage of material along 599 to Savant Lake
- 20 trucks (one way) with concentrate
- Additional material to supply and service camp and mine operations






EAGLE'S NEST PROJECT DESCRIPTION

Discover
The Eagle's Nest
Infrastructure
Environment
Community

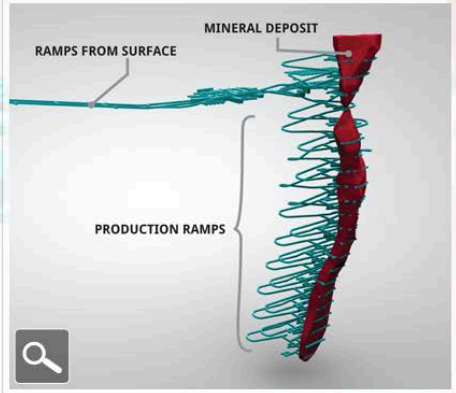
The Project
Mine Design
Mill Design
Permitting Process
Exploration

**MINE DESIGN**

The Eagle's Nest deposit is a near-vertical narrow structure that is well suited to underground mining methods using common blast hole stoping techniques. The deposit and surrounding granodiorite rock have been tested and are rated as "very competent" (i.e., strong). Standard underground workshops, storage areas, and infrastructure are planned. Access from the surface will be through dual ramps which will also supply and exhaust mine air.

**Highlights of the mine design include:**

- Vertical bulk mining methods using blast hole stoping with cemented backfill,
- Mining rate of 1 million tonnes per year for over 10 years,
- Surface access via twin decline ramps from a portal to underground processing plant,
- Mining operations connected by continuing twin ramps to the lower production levels,
- Applying the latest automation and tele-remote mining techniques,
- Maximizing usage of electric trucks and equipment to reduce fuel and ventilation requirements, and
- Aggregate rock stoping operations to provide rock for surface infrastructure, local construction and to provide storage for tailings.



MINERAL DEPOSIT

RAMPS FROM SURFACE

PRODUCTION RAMPS

PAGE 1/3

For more information related to Noront's Eagle's Nest Project go to [www.eaglesnestmine.com](http://www.eaglesnestmine.com)

**Alternative methods have been considered for the following Project components:**

- Ore Production Rate
- Ore Processing Location
- Concentrate Handling
- Tailings Management
- Mine Development Rock
- Waste Rock
- Mine and Mill Wastewater Management
- Explosives Handling and Storage
- Construction Methods
- Location of Surface Infrastructure
- Transportation Corridor
- Location of Diesel Generators
- Water Supply
- Organic and Solid Waste Management
- Hazardous Waste
- Sewage Treatment
- Storm Water Management

**Each alternative was evaluated on the basis of:**

- Technical Feasibility
- Economic Viability
- Biophysical Environmental Acceptability
- Socio-Economic Acceptability

### Transportation Corridor

- East-West transportation corridor preferred over north-south corridor:
  - Lower overall construction cost
  - Will generally follow existing winter road alignment (an existing disturbed corridor)
  - Has fewer large water crossings (north-south corridor would cross Albany, Ogoki, and Attawapiskat Rivers)
  - Fewer potential impacts to biophysical environment, most notably less impact to Caribou habitat
  - Has support from and will provide benefits to a greater number of First Nation communities

**Tailings Management**

- Underground tailings disposal preferred over surface tailings disposal

**Concentrate Shipment**

- Concentrate shipment by truck and rail preferred over only truck or concentrate pipeline

**Mine and Mill**

- Mine and mill wastewater will be recycled by processing facility which will result in no discharge of process water to the environment

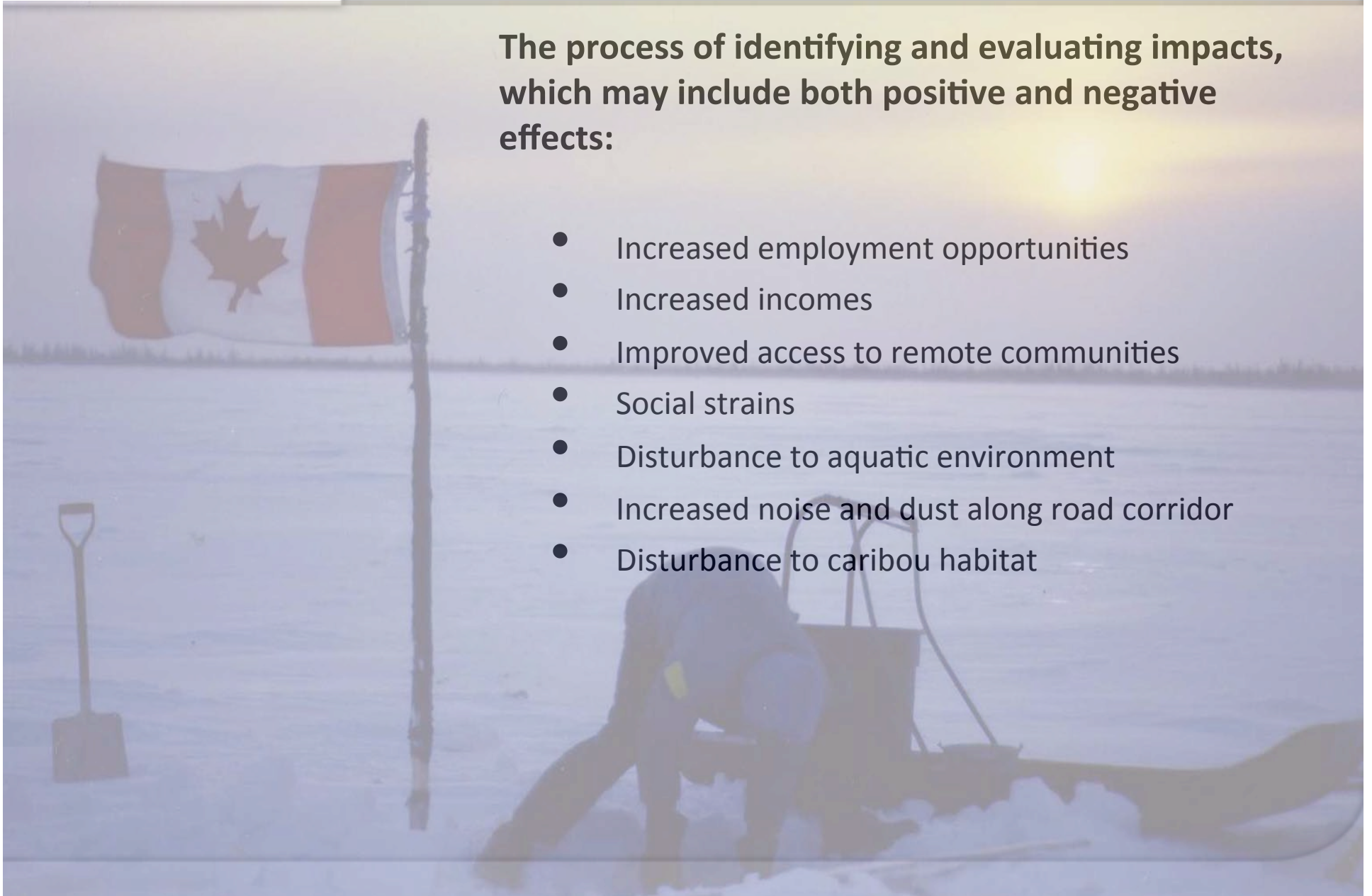




## EFFECTS ASSESSMENT

The process of identifying and evaluating impacts, which may include both positive and negative effects:

- Increased employment opportunities
- Increased incomes
- Improved access to remote communities
- Social strains
- Disturbance to aquatic environment
- Increased noise and dust along road corridor
- Disturbance to caribou habitat



## MITIGATION MEASURES

Mitigation measures will be applied order to eliminate or reduce their effects of any adverse impact. For example, mitigation measures may include:

- Aboriginal employment quotas
- Training opportunities in order to take advantage of employment
- Social programs for employees
- Proper design of water crossing to minimize impacts to aquatic ecosystems
- Fish Habitat Compensation Plan
- Dust suppression measures along road

## **Over 150 different career paths in mining**

### **Direct Jobs**

- Camp operation staff, heavy equipment operator, engineer, geologist, environmental technician, foreman, underground miner, health & safety coordinator, cook, millwright, heavy duty mechanic etc.

### **Indirect Jobs**

- Truck drivers, gas station operators, food services, pilots, etc



## 80% of jobs in mining are trainable

- Ring of Fire Aboriginal Training Alliance (ROFATA)
- On site job training with contractors





**Eagle's Next Mine development estimates forecast:**

- 700 direct jobs during construction
- 300 direct jobs during operation
- 3-4 times more workers supporting both construction and operation



**Ring of Fire is more than just Eagle's Nest Mine.  
Most of the region is still not yet explored.  
Potential not yet determined (take many years –  
maybe generations to determine scope and  
extent of opportunities).**

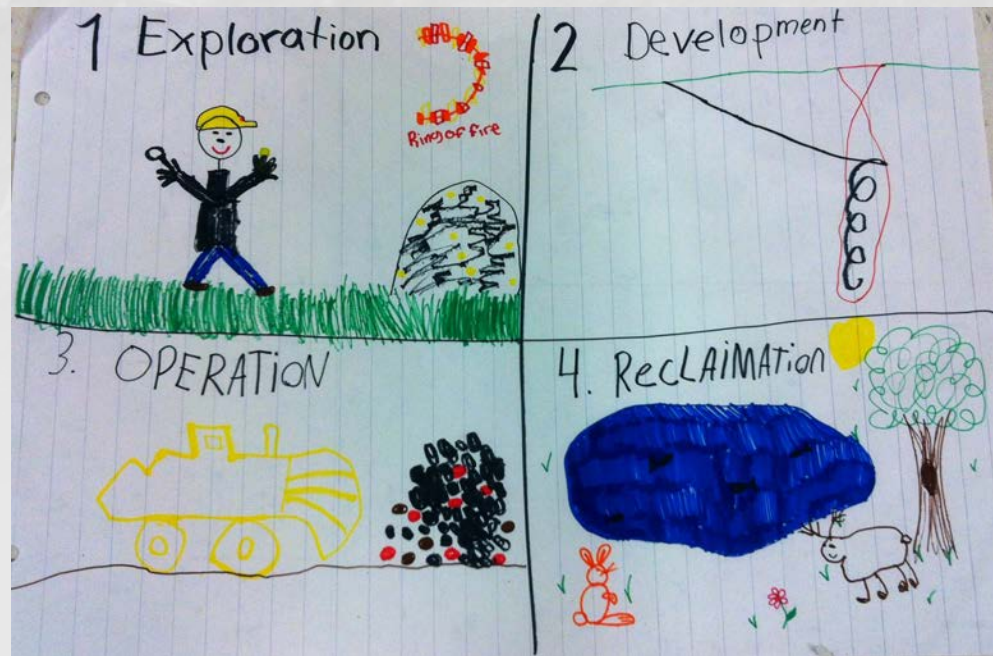
- **Aboriginal Communities** – never seen this type of development in their territory
  - Gov't, industry, work closely with communities to build awareness, foster trust
- **Infrastructure** – project is located in very remote region
  - Gov't (Federal and Provincial) work with communities, industry to prepare, plan and develop
  - Ensure safe, reliable access between industrial and community need
- **Location** – engineering, environmental, social
  - Located in wetlands (plan to construct majority of mine infrastructure underground), environmental, social
  - Work cycle, women in workforce, additional services supporting workers (training, counseling)
- **Business development**
  - Aboriginal communities, Northwestern Ontario companies
- **Media**
  - Be more proactive in sharing information "Ring of Fire" not only one company
  - Get the story straight

- 1. Infrastructure – both levels of gov’t work with communities, industry on “Northern Road Development Policy”, “Power Development Policy”, “High Speed Broadband Connectivity Policy”**
- 2. Training – development of “Northern Training Policy” to facilitate a skilled workforce to support the multi generation mining opportunities**
- 3. Business – development of “Northern Business Preference Policy” to ensure maximized opportunities for northern businesses to develop and compete regionally**
- 4. Environment - creation of “Northern Environmental Monitoring Policy” with First Nation community participation**
- 5. Social-economic**
  - Employment and business opportunities;**
  - Cultural well-being and traditional economy;**
  - Community, family, and individual well-being;**
  - Net effects on local government; and**
  - Sustainable development.**



THANK YOU | MEEGWETCH  
QUESTIONS?

---



*Angel Wabasse, Age 11  
Webequie First Nation*