



Anthropology 1032 FDE
Introduction to Biological Anthropology and Archaeology
Fall 2025

Class Time: Mondays & Wednesdays 5:30 – 7:00 pm

Class Place: ZOOM, with resources posted on MyCourseLink (D2L)

First Class: Wed. Sept. 3

Last Class: Mon. Dec. 1

Professors: Dr. Tamara Varney
(Biological Anthropology)

Office: Braun Building 2001C

Email*: tvarney@lakeheadu.ca

Office Hrs: after class or by appointment

Dr. Jessica Metcalfe
(Archaeology)

Braun Building 2001E

jmetcal1@lakeheadu.ca

after class or by appointment

Graduate Teaching Assistants: To be announced

** Please do not assume your emails to the instructors have been received unless you receive an acknowledgment. Responses to emails will take longer if received on evenings or weekends. Turnaround times of less than 24 hours are not guaranteed.*

Course Description: This course is a general introduction to biological anthropology and archaeology. It covers topics ranging from the biological origin of humans, the appearance of human culture, and the rise of civilization.

Course Learning Objectives: Upon successful completion of this course, you will be able to:

- Define fundamental terms, concepts, and methods used in biological anthropology and archaeology
- Explain ways in which biological anthropologists and archaeologists learn about past peoples
- Critically examine ways in which biological anthropology and archaeology are relevant to our modern world
- Evaluate academic arguments relevant to biological anthropology and archaeology

Class Format: This course is divided into two halves, taught by different instructors: biological anthropology (Dr. Varney) and archaeology (Dr. Metcalfe). **The format of delivery will differ between instructors.** The course schedule and other information can be found below.

Part 1 Biological anthropology (Dr. Varney) - Lectures will be delivered in both live and pre-recorded formats. All lectures will be posted on the course website. There will also be live meetings with the instructor to discuss course material during scheduled class times as well as a weekly quiz. These meetings will be interactive. Attendance is strongly encouraged.

Part 2 Archaeology (Dr. Metcalfe) - Lectures will be live on Zoom. The lectures will be recorded and posted on the course website, but live attendance is strongly encouraged. The lectures include interactive components that will help with your learning and that are difficult or impossible to engage with while watching the recording.

Required Texts:

Biological Anthropology (first half of the course):

- [Explorations: An Open Invitation to Biological Anthropology, 2nd Edition](#)

This text is online and open access (so free!). There is an option to buy a print copy available for order for those wishing to purchase one (~\$50) - go to <https://explorations.americananthro.org/> for more information.

NOTE: This book is not available at the bookstore.

Archaeology (second half of the course):

- Videos and readings as specified on the course outline, and posted on D2L
- No textbook is required.

Course Website:

- The place to access course announcements, lecture slides, Zoom recordings, and to complete quizzes and submit assignments (where specified)
- Check the website often for announcements & updates. Also keep an eye on your email for messages from the instructors.
- Access via LU website, top right corner dropdown, myCourseLink

Important Dates (Fall 2025):

First day of classes: Tues. Sept. 2

Final date to register (add): Mon. Sept. 15

Fall Study Week (no classes): Mon. Oct. 13 – Fri. Oct. 17

Final date to withdraw (drop): Fri. Nov. 7

Last day of classes: Tues. Dec. 2 (a make-up day for classes missed on Mon. Sept. 30)

Exam period (exam dates TBD): Fri. Dec. 5 – Sun. Dec. 14

Exam contingency date: Mon. Dec. 15

Instructor grade submission deadline: Thurs. Dec. 18

Evaluation:

Each half of the course will be taught and evaluated independently. Each half is worth 50% of the total course grade.

Part I: Biological Anthropology (Dr. Varney)

	Date	Location	Value
AIM (Academic Integrity Matters) module	DUE - FRI Sept 19 Upload to the dropbox under the Assignments tab	MyCourseLink	4.5 %
Quiz 1	WED Sept 17 (opens 7pm, closes 7pm on THURS Sept 18; duration ~15-30 min)	myCourseLink	4.5 %
Quiz 2	WED Sept 24 (opens 7pm, closes 7pm on THURS Sept 25; duration ~15-30 min)	myCourseLink	4.5 %
Quiz 3	WED Oct 1 (opens 7pm, closes 7pm on THURS Oct 2; duration ~15-30 min)	myCourseLink	4.5 %
Quiz 4	WED Oct 8 (opens 7pm, closes 7pm on THURS Oct 9; duration ~15-30 min)	myCourseLink	4.5 %
Part I Mid-Term Exam	WED Oct 22 (opens 5:30pm, closes 7pm) , THURS Oct 23; duration ~60-90 min)	myCourseLink	27.5 %

AIM module certificate must be submitted to the dropbox under the Assignments tab. The module course **MUST** be the 2025 course. If you have completed the course already from another course you can submit that certificate as long it is dated to the current (2025) academic year.

Quizzes and Midterm exam will be 'timed' and administered on MyCourseLink. Students will have one time window/opportunity to take the quiz/exam and if you take too long looking up the correct answers you may 'time out' before completion, so you are strongly advised to study. There will not be time to look up the answers, so be sure to be ready and focused when you take a quiz or exam.

Quizzes will relate to the previous week's material. **Quizzes are worth 20% of your final mark - DO NOT SKIP them!**

Exams will be specific to the part of the course they occur in. That is, the **Part I mid-term exam will cover only the Biological Anthropology material** and the **Part II exam will cover only the Archaeology material.**

The quizzes & Part I midterm exam may include multiple choice, true/false, matching, and image labeling/identification types of questions. Quizzes will be available for you to complete anytime within a 24 hour period. The average quiz duration will be approximately 15-30min. The Part I exam will be from 60-90 min long.

Missed quizzes and exams will not be made-up unless official documentation of a reasonable excuse is submitted (e.g. student or family illness, death of family member, car accident, internet or computer failure). Please note that going off on holidays or leaving early at the end of term does NOT constitute a reasonable excuse. Please contact instructors *within 48 hrs.* of any missed test.

Part II: Archaeology (Dr. Metcalfe)

Item	Deadline	Value
Reflection 1	Mon. Nov. 3 (11:59 pm)	6 %
Quiz 1	Thurs. Nov. 13 (available from 7:00 pm on Wed. Nov. 12 to 11:59 pm on Thurs. Nov. 13)	4.5 %
Quiz 2	Tues. Nov. 25 (available from 7:00 pm on Wed. Nov. 24 to 11:59 pm on Thurs. Nov. 25)	4.5 %
Reflection 2	Tues. Dec. 2 (11:59 pm)	10 %
Part II Exam	During exam period (Dec. 5-14)	25 %

Reflections

You will submit a short written response explaining how *you* understand the assigned material in the context of your positionality (e.g., gender identity, age, ethnicity, nationality, ancestry, religious affiliation, relationality), beliefs, and life experiences. You should reflect on how relevant aspects of who you are and what you have experienced in your life inform your understanding of and reaction to the assigned material. You must refer to specific aspects of your life experiences and/or positionality in your response. Try to not only understand the assigned material, but also to understand where your understandings come from. For advice on engaging in self-reflection, watch the short videos '[What is self-reflection and why does it matter?](#)' and '[Reflexivity in anthropology](#)' (first 5 minutes only). Further instructions and rubrics will be provided separately.

Quizzes and Exam (Part II)

These will be timed (15-30 min for quizzes, 60-90 min for exam) and accessed through the course website during the specified time interval. Questions will focus on critical thinking and analysis but will involve few to no written answers. You will need to study beforehand so that you can apply your understanding of the material to answer the questions in the time allotted. Part II quizzes are cumulative – any Part II material may be included (lectures and assigned videos/readings). The Part II exam is online and will be scheduled by the university during exam period; if you miss it, it cannot be made up unless official documentation of a reasonable excuse is submitted (e.g. student or family illness, death of family member, car accident).

Late Policies (Part II)

- Deadlines for Part II quizzes and assignments are firm—this will prepare you for a work environment in which there are real consequences for not completing tasks on time (i.e., you might lose your job!)
- 5% per day will be deducted for late assignments, but there is a 1 hr grace period following the time deadline. (That is, assignments/quizzes more than 1 hour late will receive a minimum 5% deduction.)
- After 7 days, assignments will not be accepted and you will receive a grade of zero.
- Exceptions to this policy include emergencies, illnesses communicated to the instructor in a timely manner, and SAS accommodations.

Course Schedule (subject to modification)

Introductions (Dr. Metcalfe & Dr. Varney)

Date	Lecture Topic	Required Reading/Viewing
Wed. Sept 3	Introduction to the course	What is Anthropology? (Rutherford, 2022 text) Careers after Anthropology (U of T resource) Was my anthropology major worth it? (11 min); What is anthropology? (1 min) Definition of culture (1 min) How culture shapes everything you do (1 min), Anthropology is unique (1 min), Chapter 1 in Explorations text

Part I: Biological Anthropology (Dr. Varney)

Date	Lecture Topic	Test Date	Readings (Explorations text)
Mon. Sept 8	Historical development of evolutionary thought		Chapter 2 up to the section "What Darwin was Missing" https://pressbooks.calstate.edu/explorationsbioanth2/chapter/2/
Wed. Sept 10	Genetics & the development of modern evolutionary theory		Chapter 2 the remainder after last week https://pressbooks.calstate.edu/explorationsbioanth2/chapter/2/ Chapter 3 https://pressbooks.calstate.edu/explorationsbioanth2/chapter/3/ Chapter 4 https://pressbooks.calstate.edu/explorationsbioanth2/chapter/4/
Mon. Sept 15	Modern human biological variation & adaptability		Chapter 13 https://pressbooks.calstate.edu/explorationsbioanth2/chapter/13/

			plorationsbioanth2/chapter/13/ Chapter 14 https://pressbooks.calstate.edu/explorationsbioanth2/chapter/14/
Wed. Sept 17	Humans in Nature: Taxonomy with emphasis on Primates	Quiz 1	Chapter 5 https://pressbooks.calstate.edu/explorationsbioanth2/chapter/5/
Fri Sept 19	AIM certificate DUE in Dropbox	AIM certificate	
Mon. Sept 22	Our closest living relatives: Living non-human primates		Chapter 6 https://pressbooks.calstate.edu/explorationsbioanth2/chapter/6/
Wed. Sept 24	Primate Evolution	Quiz 2	Chapter 7 https://pressbooks.calstate.edu/explorationsbioanth2/chapter/7/ Chapter 8 https://pressbooks.calstate.edu/explorationsbioanth2/chapter/8/
Mon. Sept 29	Early Hominins		Chapter 9 https://pressbooks.calstate.edu/explorationsbioanth2/chapter/9/ Chapter 10 Up to the section on " <i>Homo erectus</i> " https://pressbooks.calstate.edu/explorationsbioanth2/chapter/10/
Wed. Oct 1	<i>Homo erectus</i> & Archaic <i>Homo sapiens</i>	Quiz 3	Chapter 10 remainder from last week https://pressbooks.calstate.edu/explorationsbioanth2/chapter/10/

			plorationsbioanth2/chapter/10/ Chapter 11 https://pressbooks.calstate.edu/explorationsbioanth2/chapter/11/
Mon. Oct 6	Archaic <i>Homo sapiens</i> (including Neanderthals); Anatomical modern <i>Homo sapiens sapiens</i>		Chapter 12 up to the section on "The Chain Reaction of Agriculture" https://pressbooks.calstate.edu/explorationsbioanth2/chapter/12/
Wed. Oct 8	Guest Speaker	Quiz 4	
Mon Oct 13	Thanksgiving Holiday - no classes		
Oct 14-17	Study Week – no classes		
Mon. Oct. 20	INTERACTIVE review for Part I Midterm Exam		
Wed. Oct. 22	Part I Exam/Course Midterm	Midterm Exam (Part 1)	

Part II: Archaeology (Dr. Metcalfe)

Date	Lecture Topic & Deadlines	Required Readings/Videos (see course website for links)
Methods and Theory in Archaeology		
Mon. Oct 27	Introduction to Archaeology	<u>Videos</u> : What is archaeology? (8 min) Why is archaeology important? (4 min), Reflexivity in anthropology (5 min)
Wed. Oct 29	Archaeology's History and Ethics	<u>Video</u> : The Real Impacts of Archaeology on Native Americans (11 min)
Mon. Nov. 3	Archaeological Evidence & Interpretation <i>*Reflection 1 due*</i>	<u>Videos</u> : Formation processes (7 min), Flintknapping with Noel Grayson (12 min) Flakes & spalls: Basic flintknapping (3 min), Zooarchaeology: Identifying bones (9 min) Intro to mammal skull identification (14 min) Virtual Labs: Stone Tools, Bones & Teeth
Wed. Nov. 5	Archaeological Fieldwork	<u>Videos</u> : ANTH 2137 Orillia mock excavation (15 min) CBC News 2025 Indigenous field school (3 min) <u>Texts</u> : Law (2023), Horton & Heyd (2015)
Mon. Nov 10	Archaeological Laboratory Work	<u>Videos</u> : Seriation (5 min), How does radiocarbon dating work? (2 min), Archaeological dating methods (4 min) <u>Texts</u> : Peppe (2013), Wade (2025)
Archaeology Case Studies		
Wed. Nov 12	Big Game Hunting & Megafaunal Extinctions <i>*Quiz 1 due Thursday Nov. 13*</i>	<u>Text</u> : Geggel (2024) <u>Video</u> : First Look at Megafauna of Australia (2 min), Megafauna Oral Histories (8 min), Giant Kangaroo rock art (5 min)
Mon. Nov 17	Food & Agriculture	Ch. 14.1 Food as a material artifact. In: Hasty et al. (2025), Introduction to Anthropology
Wed. Nov 19	Equality & Inequality	<u>Videos</u> : Why did humans invent cities? (9 min); Caral, the legacy (14 min)
Mon. Nov 24	Mobility & Migration <i>*Quiz 2 due Tuesday Nov. 25*</i>	<u>Videos</u> : Migration, the Untold Story (3 min) The Navigators of Polynesia (3 min) <u>Texts</u> : Doucleff (2013), Garisto (2018), Minogue (2021)
Wed. Nov 26	Music, Art, & Beauty	<u>Videos</u> : Fat gets no respect, but that should change (3 min), Hohle Fels Cave flute (4 min), Incredible Ice Age paintings (4 min), Hairdo archaeologist solves ancient mystery (4 min) <u>Texts</u> : Nash (2019), McDermott (2021) Virtual Tour: Lascaux Cave
Mon. Dec. 1	Serving Communities / Course Wrap-Up <i>*Reflection 2 due Tues. Dec. 2*</i>	Herr et al. (2023)

Date	Lecture Topic & Deadlines	Required Readings/Videos (see course website for links)
Dec 5-14 (exam period)	<i>*Part II Exam*</i> (date & time TBD by university, accessed through course website)	

General Information

Regulations – from the Lakehead University [Academic Calendar](#)

It is the responsibility of each student registered at Lakehead University to be familiar with, and comply with all the terms, requirements, regulations, policies and conditions in the Lakehead University Academic Calendar. This includes, but is not limited to, Academic Program Requirements, Academic Schedule of Dates, University and Faculty/School Policies and Regulations and the Fees and Refund Policies and Schedules.

Academic Integrity

For a range of resources related to Academic Integrity, see the [Student Conduct – Resources](#) page. A breach of Academic Integrity is a serious offence. The principle of Academic Integrity, particularly of doing one's own work, documenting properly (including use of quotation marks, appropriate paraphrasing and referencing/citation), collaborating appropriately, and avoiding misrepresentation, is a core principle in university study. Students are strongly advised to familiarize themselves with the Student Code of Conduct - Academic Integrity ("[The Code](#)") - and, in particular, **sections 26 and 83 through 85**. Non-compliance with the Code will NOT be tolerated in this course and the Code will be adhered to in terms of disciplinary action. The Code provides a full description of academic offences, procedures when Academic Integrity breaches are suspected and sanctions for breaches of Academic Integrity.

Use of Generative Artificial Intelligence (GenAI)

Generative artificial intelligence (Generative AI or GenAI) is a category of AI systems capable of generating text, images, or other media in response to prompts. These systems include ChatGPT and its variants Bing (built by OpenAI) and Bard (built by Google) among others. GenAI is also increasingly being added to existing programs (e.g., pdf readers, Grammarly, etc.).

Inappropriate use of Generative AI tools is captured by Section III of the Student Code of Conduct - Academic Integrity Policy, which lists a variety of acts that are considered offences under the Academic Integrity Code. While not an exhaustive list, *submission of work created by or in collaboration with Generative AI tools (ChatGPT, Bard, etc.) could be categorized as Plagiarism* (para 26a), *Use of Unauthorized Materials* (para 26b), or *Falsification* (para 26e), and may be in conflict with the Academic Policy quoted above.

GenAI tools can provide valuable assistance and support in academic work. However, it is essential to use them responsibly and ethically, and to contact the instructor to discuss potential 'grey areas' or points of confusion.

The following information and guidelines apply to the use of AI-based tools in this course:

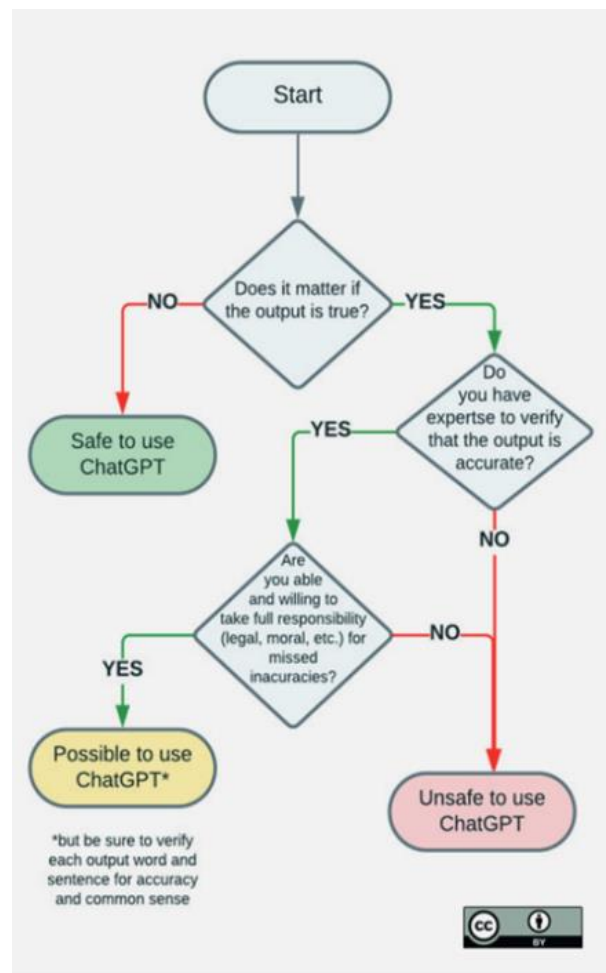
Student Responsibility – It is the responsibility of the student to understand the limitations of AI-based tools. While these tools can provide suggestions and insights, final decisions and critical thinking should come from the student's own understanding and effort. Before submitting a written assignment, review your work with this in mind. If it is unclear whether a particular form of GenAI usage is appropriate, ask the instructor for clarification.

Formative Usage – In this class, **you may use GenAI for formative, but not summative, work.** In other words, you can use AI to help formulate ideas, provide advice, or as a learning aid. Examples of appropriate AI use include brainstorming (generating ideas), asking questions (to help you formulate your own ideas and phrasing), and generating ideas that you use as inspiration for creating your own work. **AI may not be used as the primary way of creating any work that is submitted for marks or evaluation,** unless the assignment specifically asks you to submit AI outputs. Use of AI during tests is prohibited unless indicated otherwise.

Error & Bias – AI content is created by computer algorithms that have been trained using large amounts of data. The AI learns from patterns and examples in the data to generate new content that resembles what it has been trained on. If the training data used to train the AI model is biased or limited in scope, the AI may reproduce content that is inaccurate, incomplete, offensive, and/or biased. Students should weigh this as they consider material produced by AI. Here is a helpful graphic from UNESCO's [ChatGPT and Artificial Intelligence in Higher Education Quick Start Guide](#):

This applies not only to ChatGPT but to all genAI tools:

Trustworthiness – Generative AI is vulnerable to manipulation and misuse. It can be used to generate fake news, misinformation, or deepfake content, which can have harmful consequences. It 'hallucinates' – meaning it makes up information and sources. Students must always check AI generated content against reputable sources. If your AI tool provides a



source for the material it generates, you must check the original source to ensure that it exists and that the AI summary of its content was accurate.

Plagiarism – Since writing and critical thinking ability are evaluated in this course, all work submitted for evaluation must be the student's original work. Using the work of others (including content curated/generated by AI) without proper citation is considered plagiarism. See “Citation of Sources” for assistance with correct documentation.

Citation of Sources – If you use material generated by an AI program for an assignment in this course, it must be cited like any other source (with due consideration for the quality of the source, which may be judged as poor). Failure to do so will be considered a violation of academic integrity. See Student Code of Conduct – Academic Integrity.

AI Declaration – Your instructors may require you to submit an AI declaration along with your required work in this course. See the course information above and the course website for further details.

Copyright

Students should be aware that all instructional, reference, and administrative materials prepared for this course are protected in their entirety by copyright. Students are expected to comply with this copyright by only accessing and using the course materials for personal educational use related to the course, and that the materials cannot be shared in any way, without the written authorization of the course instructor. If this copyright is infringed in anyway, students may be prosecuted under the Lakehead University Student Code of Conduct – Academic Integrity, which requires students to act ethically and with integrity in academic matters and to demonstrate behaviours that support the University's academic values.

Supports for Students – there are many resources available to support students, including:

- [Health and Wellness](#)
- [Student Success Centre](#)
- [Student Accessibility Centre](#)
- [Academic Support Zone](#) (Writing and Math Tutoring Centre)
- [Library](#)
- [Lakehead International](#)
- [Indigenous Initiatives](#)

Lakehead University is committed to achieving full **accessibility** for persons with disabilities. Part of this commitment includes arranging academic accommodations for students with disabilities and/or medical conditions to ensure they have an equitable opportunity to participate in all of their academic activities. If you are a student with a disability and think you may need accommodations, you are strongly encouraged to contact Student Accessibility Services (SAS) and register as early as possible. For more information, please contact [Student Accessibility Services](#) (SC0003, 343-8047 or sas@lakeheadu.ca)

As a university student, you may sometimes **experience mental health concerns or stressful events** that interfere with your academic performance and negatively impact your daily activities. All of us can benefit from support during times of struggle. If you or anyone you know experiences academic stress, difficult life events or feelings of anxiety or depression, **Student Health and Wellness** is there to help. Their services are free for Lakehead Students and appointments are available. You can learn more about confidential mental health services available on and off campus at lakeheadu.ca/shw. Remember that getting help is a smart and courageous thing to do for yourself, for those you care about, and for those who care about you. Asking for support sooner rather than later is almost always helpful.

Video/Audio Recording: In the context of remote instruction and participation, video and audio recordings of class activities will be made to ensure students' and instructors' easy and comprehensive access to those activities. The recordings are **confidential** and are intended only for the use of the course students and instructors. They may otherwise not be used or disclosed. During recording, to protect others' privacy, each student should ensure that no one else is present in the location where they are being recorded without that non-student's consent. The recordings are made under the authority of sections 3 and 14 of The Lakehead University Act, 1965. Questions about the collection of the images and sounds in the recordings may be directed to Dr. Todd Randall (Dean, Faculty of Science and Environmental Studies): dean.ses@lakeheadu.ca