

DEPARTMENT OF ANTHROPOLOGY
ANTH 2137 FAO Fundamentals of Archaeology
Fall 2022

Tuesdays & Thursdays, 8:30-10:00 am

OA 2015

Instructor: Dr Timothy Kaiser

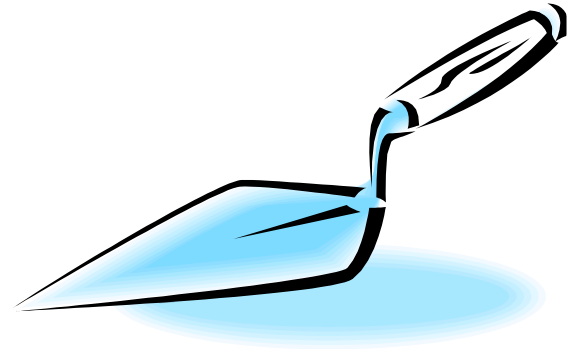
CONTACT INFORMATION

Office: OA 3008

Office Hours: Tuesdays & Thursdays, by appointment

Email: tkaiser@lakeheadu.ca

Supplementary Course Website: MyCourseLink (D2L)



COURSE DESCRIPTION

An introduction to modern archaeological methods. Topics include chronometric dating, archaeological survey and excavation techniques, artifact analysis, environmental archaeology (archaeobotany, geoarchaeology and zooarchaeology), ethnoarchaeology, social archaeology, cognitive archaeology, and the archaeology of ethnicity.

Credit Weight: 0.5

Prerequisite(s): [Anthropology 1032](#) and [1034](#) or permission of the Chair of the Department of Anthropology

<https://csdc.lakeheadu.ca/~Catalog/ViewCatalog.aspx?pageid=viewcatalog&catalogid=29&topicgroupid=31364>

SUPPLEMENTARY COURSE DESCRIPTION

For the most part archaeologists engage in the scientific, systematic study of past human behavior, which they infer or reconstruct from the material remains of the past. The recovery of ancient material remains (usually through excavation) has led to some remarkable discoveries about the human past. This half-course introduces you to the methods and theories of archaeology – the fundamental concepts and practices that structure all archaeological research.

Using tangible evidence, the material traces of past behaviors or events, archaeologists piece together an understanding of ancient peoples. How is this done? How is the leap made from mute objects to a vivid depiction of life long ago and far away?

This course looks at how information about the past is preserved, how it is recovered, and how it is interpreted. Topics covered include fieldwork, artifact analysis, dating techniques, environmental reconstruction, settlement analysis, and the explanation of change. How do archaeologists deal with topics ranging from the origin of humans to the rise of civilizations? This course surveys their experiences and contributions.

Active learning is encouraged in this course. To that end, students are expected to participate in fieldwork exercises on campus. These exercises will teach methods of excavation and observation and will take place in September-October, weather and other circumstances permitting. *On field days class will start at 8 a.m. Taking into account whatever weather awaits and the certainty that you will get dirty, be sure to dress appropriately.* Details to follow.

COURSE OUTCOMES

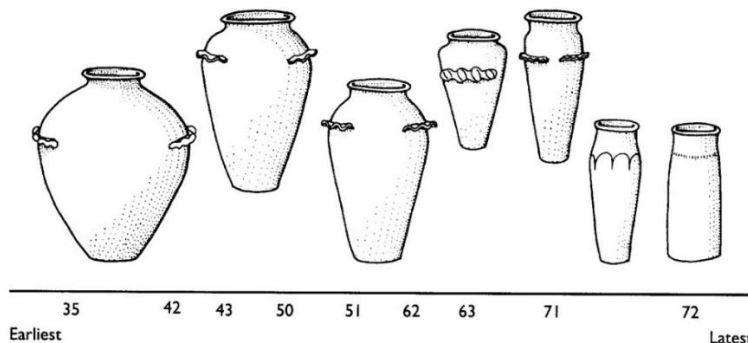
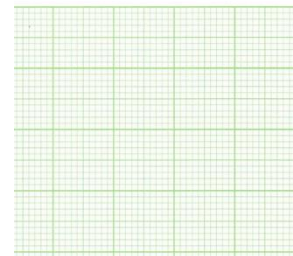
By the end of this course, you will be able to:

- demonstrate a practical and conceptual understanding of archaeological method and theory
- articulate general and specific levels of knowledge of the nature of archaeological inquiry
- critically evaluate existing research results and methods of archaeologists present and past

REQUIRED MATERIALS

T. Douglas Price & Kelly J. Knudson, (2018) *Principles of Archaeology*, 2nd ed. New York: Thames and Hudson.

A pack of millimeter graph paper (Has faint lines making 1-cm squares subdivided by 1-mm lines. DO NOT use quadrille paper, which is divided into 1/4-inch squares. Archaeology is metric!)



EVALUATION

Component	Value	Date
Assignments		
Set A. Two short exercises in archaeological thinking. See D2L.	10%	October 4
Set B. 'Sandbox 101.' A field exercise in the recovery and analysis of mock archaeological data. Your participation in and conduct of archaeological fieldwork as well as your analysis of the specific problem set will be evaluated. See instructions in D2L.	30%	October 27
Set C. Tombstone seriation. After carrying out your own fieldwork, you will analyze the chronology of a cemetery's grave markers. See instructions in D2L.	25%	November 15
Set D. Scientific papers, summarized. For each of five different archaeological methods you will find a recent journal article pertaining to that method and summarize it. See instructions in D2L.	25%	December 1
Participation.	10%	Continuous

Important Dates:


Fall Study Break: Monday, October 10 – Friday, October 14. No classes.

Final Day to Drop This Course: Friday, November 4, 2022



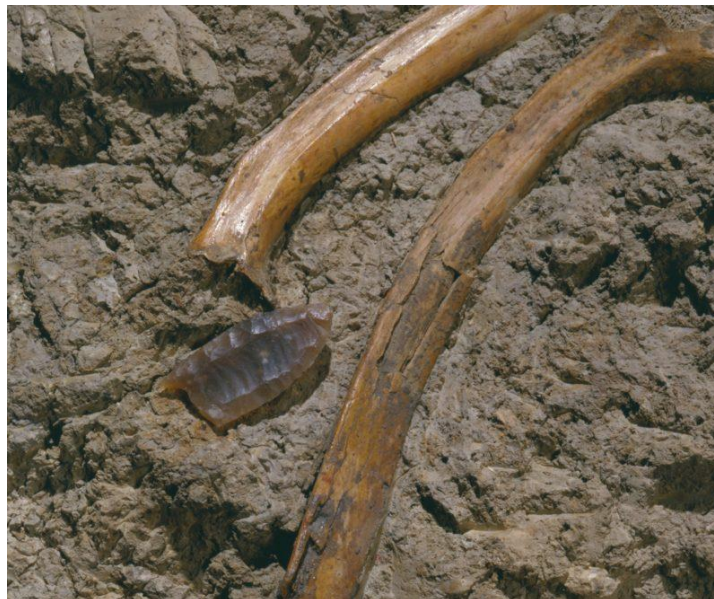
ANTH 2137 FAO Method & Technique in Archaeology 2022 Course Schedule

This schedule is subject to modification as circumstances require.

Week	Date		Topic, readings and viewings
1	Sept 6	1	Introduction to archaeology and archaeologists Price & Knudson (2018) <i>Principles of Archaeology</i> , Ch. 1-2. View <i>Principles of Archaeology – Video 1</i> (henceforth “PrinArcVid”) (D2L) View <i>PrinArcVid-2</i> (D2L)
	Sept 8	2	Interpretation <i>Principles</i> , Ch. 3 View <i>PrinArcVid-3</i> (D2L)
2	Sept 13	3	Archaeological questions <i>Principles</i> , Ch. 4
	Sept 15	4	The archaeological record <i>Principles</i> , Ch. 5
3	Sept 20	5	Introduction to field survey and excavation <i>Principles</i> , Ch. 6
	Sept 22	6	Fieldwork practicum begins Early start at 8 am for all fieldwork. Dress appropriately. Fieldwork will end in time for you to clean up before your next class. If it is raining, we will meet in the classroom at 8:30. Watch: <i>Archaeological Methods: Set up a 1m grid square</i> https://www.youtube.com/watch?v=xNdFDzQzqPk Watch: <i>Archaeological Methods: How to excavate a test-pit</i> https://www.youtube.com/watch?v=k_ltaza4lUA
			
5	Sept 27	7	Fieldwork practicum
	Sept 29	8	Fieldwork practicum

6	Oct 4	⁹	Fieldwork practicum Classification <i>Principles</i> , Ch. 7
	Oct 6	¹⁰	Fieldwork practicum ends
	Oct 10-14		FALL STUDY BREAK
7	Oct 18	¹¹	Dating <i>Principles</i> , Ch. 8 J. Deetz and E.S. Dethlefsen (1967) Deaths Head, Cherub, Urn and Willow. http://www.histarch.illinois.edu/plymouth/deathshhead.html View <i>Renfrew Video - Radiocarbon</i>
	Oct 20	¹²	Dating, continued Richter, D. et al. (2017) The age of the hominin fossils from Jebel Irhoud, Morocco, and the origins of the Middle Stone Age. <i>Nature</i> 646 (7657) Bennet, M.R., et al. (2021) Evidence of humans in North America during the last glacial maximum. <i>Science</i> 373 : 1528-1531.
8	Oct 25	¹³	Geoarchaeology <i>Principles</i> , Ch. 9
	Oct 27	¹⁴	Lithic analysis <i>Principles</i> , Ch. 10
9	Nov 1	¹⁵	Ceramic analysis <i>Principles</i> , Ch. 11
	Nov 3	¹⁶	Archaeobotany <i>Principles</i> , Ch. 12
10	Nov 8	¹⁷	Archaeozoology <i>Principles</i> , Ch. 13
	Nov 10	¹⁸	Bioarchaeology <i>Principles</i> , Ch. 14 View <i>PrinArcVid-5 (D2L)</i>

11	Nov 15	¹⁹	Archaeological chemistry <i>Principles</i> , Ch. 15 View <i>PrinArcVid-4</i> (D2L)
	Nov 17	²⁰	Social systems and ancient cultures C. Renfrew and P. Bahn (2018) <i>Archaeology Essentials</i> , Ch 5. How were societies organized? View <i>Renfrew Video – Social Organization</i> (D2L) View <i>Renfrew Video – Trade</i> (D2L)
12	Nov 22	²¹	Social systems, continued.
	Nov 24	²²	Ethics <i>Principles</i> , Ch. 16 View <i>PrinArcVid-6</i> (D2L)
	Nov 29	²³	Research design TBA
	Dec 1	²⁴	Conclusion



COURSE POLICIES

It is your responsibility to attend classes, do the readings and to complete assignments on time. Regular absences will seriously affect your grade in this course.

All relevant information about the course is on the D2L course site. All assignments must be submitted through the D2L course site.

In cases of un-excused lateness, submissions will have 5% deducted from the mark for every day of lateness. No assignment that is more than ten days late will be accepted.

Copyright

Lectures and course materials, including power point presentations, outlines, and similar materials, are protected by copyright. You may take notes and make copies of course materials for your own educational use. You may not record lectures, reproduce (or allow others to reproduce), post or distribute lecture notes, wiki material, and other course materials publicly and/or for commercial purposes without my written consent.

ACCOMMODATIONS

Lakehead University is committed to achieving full accessibility for persons with disabilities. Part of this commitment includes arranging academic accommodations for students with disabilities to ensure they have an equitable opportunity to participate in all of their academic activities. If you are a student with a disability and think you may need accommodations, you are strongly encouraged to contact Student Accessibility Services (SAS) and register as early as possible. For more information, please visit

<https://www.lakeheadu.ca/faculty-and-staff/departments/services/sas>

ACADEMIC DISHONESTY

The University takes a most serious view of offences against academic honesty such as plagiarism, cheating and impersonation. Penalties for dealing with such offences will be strictly enforced.

<https://www.lakeheadu.ca/faculty-and-staff/policies/student-related/code-of-student-behaviour-and-disciplinary-procedures>

We respectfully acknowledge that Lakehead University campuses are located on the traditional lands of Indigenous peoples. Lakehead University acknowledges the history that many nations hold in the areas around our campuses, and is committed to a relationship with First Nations, Métis, and Inuit peoples based on the principles of mutual trust, respect, reciprocity, and collaboration in the spirit of reconciliation.

