

## METHOD AND TECHNIQUE IN ARCHAEOLOGY (ANTH 2137)

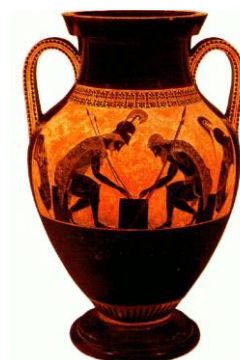
Instructor: Dr. M. Boyd

Office: BB-2001-F

Phone: (807) 343-8010 ext. 8279

E-mail: [matthew.boyd@lakeheadu.ca](mailto:matthew.boyd@lakeheadu.ca)

Office hours: M/W 2:30 – 3:15 pm or by appointment



### Course description:

This course will introduce you to the practice and application of modern archaeology, focusing on archaeological methods. Topics include: chronometric dating; methods of archaeological survey and excavation; analysis of pottery and stone tools; environmental archaeology (archaeobotany, geoarchaeology and zooarchaeology); and settlement patterns and spatial analysis. *Class participation is encouraged!*

### Required text:

Renfrew, C. & Bahn, P. Archaeology: Theories, Methods and Practice. New York: Thames & Hudson. Latest Edition.

### Grading:

1. Attendance (“hands-on” sessions 2 and 3 only): **5%**

2. Written assignment: **25%** (about 10 pp. double spaced, not including references/figures)

- Write a scholarly paper using peer-reviewed sources on any topic covered in this class or your textbook (i.e., any archaeological method, broadly defined).
- Style guide: APA. No abstract or keywords are required. See: [https://owl.purdue.edu/owl/research\\_and\\_citation/apa\\_style/apa\\_formatting\\_and\\_style\\_guide/general\\_format.html](https://owl.purdue.edu/owl/research_and_citation/apa_style/apa_formatting_and_style_guide/general_format.html)
- I encourage you to talk to me about your term paper idea so I can provide some guidance, although this isn't required.
- Grading will employ a rubric that will be posted on D2L.
- I am willing to read a rough draft of your paper as long as you provide me with a copy at least 1 week before the deadline. My comments on your rough draft will be general in nature.

3. Midterm exam: **30%**

4. Final exam (December): **40%**

### Grade Distributions:

<b>A+</b>	90-100%	<b>B</b>	70-79%	<b>D</b>	50-59%	<b>F</b>	0-39%
<b>A</b>	80-89%	<b>C</b>	60-69%	<b>E</b>	40-49%		

- Students are responsible for ensuring that they are properly registered in this class.
- See the LU Calendar for information on academic integrity, examinations, grade appeals, and other important regulations of which you should be aware.

- Late term papers and other assignments will be deducted **10% per day** from the final grade for that assignment.
- The written assignment should be submitted online, using D2L under the “Assignments” tab.
- Covid-19 precautions: face masks and physical distancing are required at all times as per university rules (<https://www.lakeheadu.ca/about/coronavirus>). Please talk to the instructor if you have any concerns about this.
- **STUDENT ACCESSIBILITY SERVICES** Lakehead University is committed to achieving full accessibility for persons with disabilities. Part of this commitment includes arranging academic accommodations for students with disabilities to ensure they have an equitable opportunity to participate in all of their academic activities. If you are a student with a disability and think you may need accommodations, you are strongly encouraged to contact Student Accessibility Services (SAS) and register as early as possible. For more information, please visit <https://www.lakeheadu.ca/faculty-and-staff/departments/services/sas>.
- I will use rubrics when grading assignments. Rubrics will be posted well in advance of the due date.

Topic	Contents	Readings
1	Introduction to course; What is archaeology?	Introduction
2	A short history of archaeology	Ch. 1
3	The nature of the archaeological record The concept of culture Archaeological data (artifact, assemblage, site, settlement patterns, etc.)	Ch. 2
4	<u>Chronometric dating:</u> Relative dating (stratigraphy, seriation) Absolute dating (e.g., K-Ar; radiocarbon; U series)	Ch. 4
<b>HANDS-ON 1</b>	<b>Tour of an archaeological site on campus (voluntary)</b>	
5	<u>Finding and assessing archaeological sites:</u> Archaeological survey; remote sensing Site assessment <u>Archaeological excavation:</u> Importance of multidisciplinary teams Types of excavation Process of excavation	Ch. 3
<b>Oct. 11-15</b>	<b>Study break (classes cancelled)</b>	
<b>Oct. 20</b>	<b>Midterm exam</b>	
6	Artifact typology and classification Lithic technology and analysis	Ch. 8
<b>HANDS-ON 2</b>	<b>Lithic artifacts</b>	
7	Ceramic technology and analysis Other types of artifacts	Ch. 8
<b>HANDS-ON 3</b>	<b>Pottery</b>	
8	<u>Reconstructing subsistence &amp; diet:</u> Zooarchaeology Archaeobotany	Ch. 7
9	Environmental change and human adaptation Mechanisms and scales of climate change Methods	Ch. 6
10	Ethnoarchaeology Social organization/ social archaeology	Ch. 5 & 9
<b>Dec. 6 (last class)</b>	<b>Written assignment due</b>	
<b>TBA</b>	<b>Final exam</b>	