

DEPARTMENT OF ANTHROPOLOGY
ANTH 4813 WAO Archaeology of the Mediterranean

Winter 2021

Mondays, 7 – 10 pm

ZOOM

Instructor: Dr Timothy Kaiser

CONTACT INFORMATION

~~Office: OA-3008~~

Virtual Office Hours: TTh 10-11 am, or by appointment

Email: tkaiser@lakeheadu.ca

~~Phone Number: 705.330.4008 ext 2611~~

Supplementary Course Website: MyCourseLink (Desire2Learn)

COURSE DESCRIPTION

Survey of Mediterranean archaeology from the Lower Palaeolithic to the Roman Empire. As a seminar, we will discuss and analyze a recent comprehensive synthesis.



Taormina, Sicily, with Mt. Etna in the background

COURSE OUTCOMES

By the end of this course, students will be able to:

- demonstrate a practical and conceptual understanding of how archaeological methods and theories have been applied in the study of the Mediterranean's past
- articulate general and specific levels of knowledge of Mediterranean prehistory, proto-history, and history, and
- critically evaluate existing research results and methods

REQUIRED MATERIALS

Cyprian Broodbank (2013) *The Making of the Middle Sea: A History of the Mediterranean from the Beginning to the Emergence of the Classical World*. London: Thames & Hudson.

EVALUATION

1. Term Paper 50%
2. Participation 50%

Term paper:

Half of your grade in this course will be based on a term paper you will write. This will be a research paper focussing on some aspect of Mediterranean archaeology. Topics will be suggested after the first week of classes, but you are encouraged to develop your own topic, in consultation with the instructor. Intermediate steps on the way to the paper's completion will be evaluated as part of the term paper mark.

Participation:

Learning about Mediterranean archaeology in the context of a small class connected by Zoom under the constraints imposed this year by public health considerations will demand your active participation – it is not something that lends itself to osmosis. You are expected not only to show up for classes but also to be engaged with the subject matter. Aspects that will be considered for grading include how often you show up, how often you speak up, and how often your contribution(s) advance(s) the conversation.

Another aspect of participation will involve writing occasional briefings on subjects raised in the textbook – these briefings will help guide our discussions.

Consequently, participation in the class will involve both oral and written communication.



Blue amphorae in the collection of the Bodrum Museum of Underwater Archaeology, Turkey.

Schedule

Week	Date	Topic	Reading
1	Jan 11	Introduction Some geography	
2	Jan 18	Initial thoughts on time and space	Broodbank, Ch 1-2
3	Jan 25	Pleistocene prelude, 1.8-0.05 mya	Broodbank, Ch 3
4	Feb 1	Ice Ages, 50,000-10,000 BCE	Broodbank, Ch 4
5	Feb 8	10,000-5500 BCE – Early Holocene Hunters, Gatherers and Farmers 1 paragraph idea for paper	Broodbank, Ch 5
Reading Week			
6	Feb 22	5500-3500 BCE – Farming’s florescence	Broodbank, Ch 6
7	Mar 1	3500-2200 BCE – Complexity and complications Prelim bibliography	Broodbank, Ch 7
8	Mar 8	2200-1300 BCE – Early civilizations and neighboring societies of the Bronze Age	Broodbank, Ch 8
9	Mar 15	2200-1300 BCE – East and West	Broodbank, Ch 8, continued
10	Mar 22	1300-800 BCE – Latitudinal linkage Rough draft	Broodbank, Ch 9 Samantha
11	Mar 29	800-500 BCE – To the edge of the classical period	Broodbank, Ch 10
	Apr 5	Easter Monday Holiday No Class	
12	Apr 12	Summation Final draft	Broodbank, Ch 11

COURSE POLICIES

1. It is your responsibility to attend classes and to do the readings. Regular absences will seriously affect your grade in this course.
2. Any important announcements, including changes in due dates, will be announced in-class and posted on MyCourseLink (Desire2Learn).
3. Recordings of class meetings and lectures will be posted at regular intervals – see below.
4. Any course work not submitted on time will be subject to a 5% deduction per day of unexcused lateness.

ACADEMIC DISHONESTY

A breach of Academic Integrity is a serious offence. The principle of Academic Integrity, particularly of doing one's own work, documenting properly (including use of quotation marks, appropriate paraphrasing and referencing/citation), collaborating appropriately, and avoiding misrepresentation, is a core principle in university study. Students should view the Student Code of Conduct- Academic Integrity - for a full description of academic offences, procedures when Academic Integrity breaches are suspected and sanctions for breaches of Academic Integrity.

The student code of conduct (academic) can be found at:

https://www.lakeheadu.ca/sites/default/files/policies_procedures/Student%20Code%20of%20Conduct%20-%20Academic%20Integrity_0.pdf

STUDENT ACCESSIBILITY SERVICES

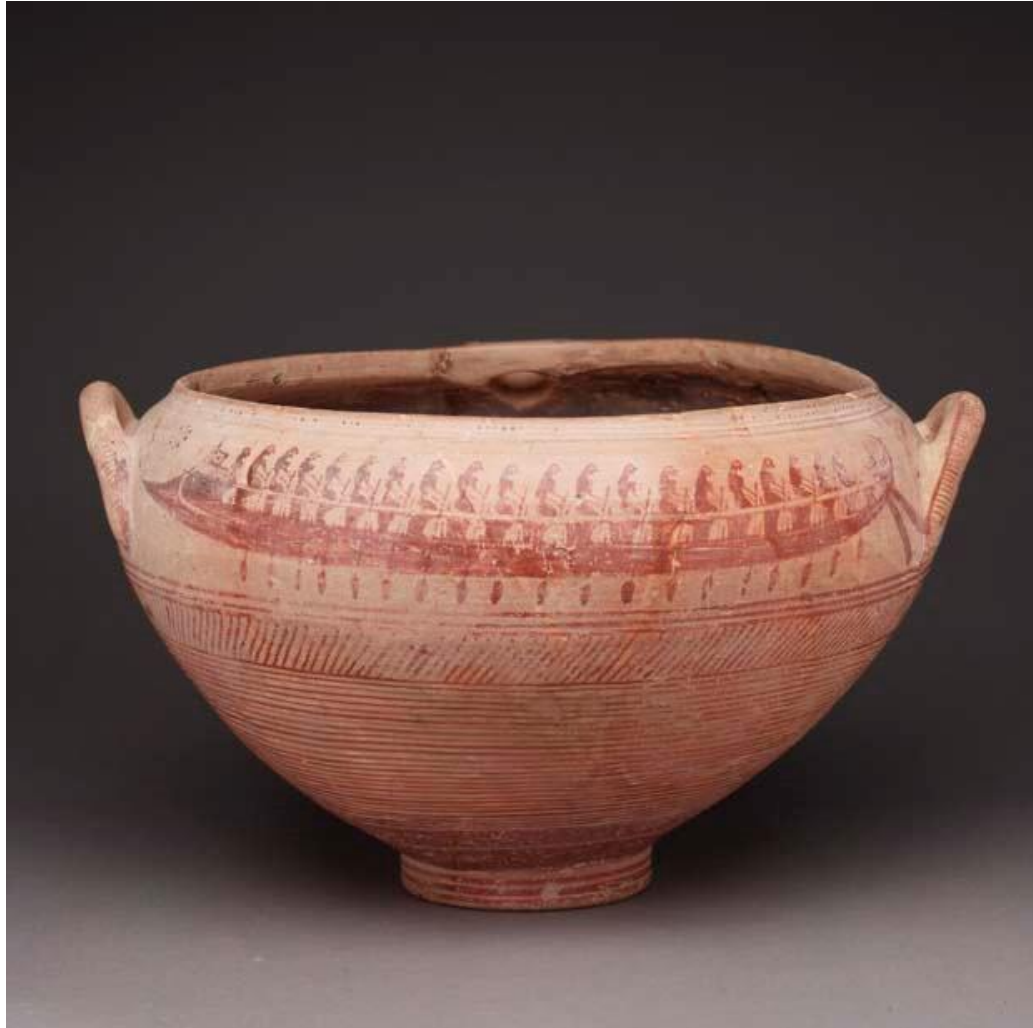
Lakehead University is committed to achieving full accessibility for persons with disabilities. Part of this commitment includes arranging academic accommodations for students with disabilities to ensure they have an equitable opportunity to participate in all of their academic activities. If you are a student with a disability and think you may need accommodations, you are strongly encouraged to contact Student Accessibility Services (SAS) and register as early as possible. For more information, please visit <https://www.lakeheadu.ca/faculty-and-staff/departments/services/sas>

Copyright

Lectures and course materials, including power point presentations, outlines, and similar materials, are protected by copyright. You may take notes and make copies of course materials for your own educational use. You may not record lectures, reproduce (or allow others to reproduce), post or distribute lecture notes, wiki material, and other course materials publicly and/or for commercial purposes without my written consent.

All relevant information about the course is on the MyCourseLink D2L course site. All assignments must be submitted through the D2L course site. The materials posted on the course D2L site, including any visual and audio recordings, are copyrighted and owned by Dr Tim Kaiser. It is prohibited to record or copy by any means, in any format, openly or surreptitiously, in whole or in part, in the absence of express written permission from Dr Tim Kaiser any of the materials provided or published in any form during or from the course. As an example, students are prohibited from making audio or video recordings of lectures, or taking pictures of lecture material.

That said, in ANTH 4813 WAO Mediterranean Archaeology, in the context of remote instruction and participation, video and audio recordings of class activities will be made to ensure students' and instructors' easy and comprehensive access to those activities. The recordings are confidential and are intended only for the use of the course students and instructors. They may otherwise not be used or disclosed. During recording, to protect others' privacy, each student should ensure that no one else is present in the location where they are being recorded without that non-student's consent. The recordings are made under the authority of sections 3 and 14 of *The Lakehead University Act, 1965*. Questions about the collection of the images and sounds in the recordings may be directed to Dr Todd Randall, Dean of the Faculty of Science and Environmental Studies.



8th c BCE Greek krater, with painted decoration showing a bireme being rowed.

Collection of the Royal Ontario Museum.

http://images.rom.on.ca/public/images/ROM2005_4032_1.jpg