

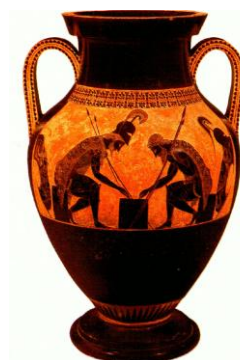
METHOD AND TECHNIQUE IN ARCHAEOLOGY (ANTH 2137)

Instructor: Dr. M. Boyd

Office: BB-2001-F

Phone: (807) 343-8279

E-mail: matthew.boyd@lakeheadu.ca



Course description:

This course will introduce you to the practice and application of modern archaeology, focusing on archaeological methods. Topics include: chronometric dating; methods of archaeological survey and excavation; analysis of pottery and stone tools; environmental archaeology (archaeobotany, geoarchaeology and zooarchaeology); and settlement patterns and spatial analysis. *Class participation is encouraged!*

Required text:

Renfrew, C. & Bahn, P. 2018. Archaeology Essentials: Theories, Methods, and Practice. New York: Thames & Hudson. 4th Edition.

Grading:

1. Youtube critique assignment: **10%** (3 pages double-spaced)

Find a video (on YouTube or similar) that shows an example of archaeological field or lab research (professional or avocational). Provide: an unbiased description of the video (1 page double spaced); a critique of the archaeological research strategy (i.e., what was good about it, how the work could have been improved in order to address the question(s) being asked), and how effective was the video at conveying the subject matter (2 pages double-spaced). You will be graded mostly on your critical thinking skills as well as the quality of your writing. Make sure that you provide the URL (and title) of the video! Here's an example of a video describing a recent project in Canada: <https://youtu.be/E99E4yxqj0> ("2018 Kakmakimilh [Keith Island] Archaeological Project").

2. Term paper: **20%** (about 10 pp. double spaced, not including references/figures)

- Write a scholarly paper using peer-reviewed sources on any topic covered in this class or your textbook.
- The subject of the paper is open but it should focus on an **archaeological method or technique** (e.g., radiocarbon dating, artifact analysis, field methods, remote sensing, paleoenvironmental reconstruction, stable isotope analysis, spatial analysis, etc.) Make sure that your topic isn't too broad, and feel free to talk to me about term paper ideas if you're stuck.
- Please follow a standard style guide for the social sciences such as MLA or APA when formatting your paper.

3. Midterm exam: **30%**

- A mix of multiple choice, and short or long answer questions.
- You will be examined on material from both the lectures as well as the required textbook.
- The exam will be conducted online through D2L and will have a strict time limit of 75 min.
- This is an 'open book' exam.

4. Final exam (December): **40%**

- Format to be determined, but will likely be similar to the midterm exam except for length/duration.

Grade Distributions:

A+	90-100%	B	70-79%	D	50-59%	F	0-39%
A	80-89%	C	60-69%	E	40-49%		

- Students are responsible for ensuring that they are properly registered in this class.
- See the LU Calendar for information on academic integrity, examinations, grade appeals, and other important regulations of which you should be aware.
- Late term papers and other assignments will be deducted **10% per day** from the final grade for that assignment.

Other information

In this course, in the context of remote instruction and participation, video and audio recordings of class activities MAY be made to ensure students' and instructors' easy and comprehensive access to those activities. The recordings are confidential and are intended only for the use of the course students and instructors. They may otherwise not be used or disclosed. During recording, to protect others' privacy, each student should ensure that no one else is present in the location where they are being recorded without that non-student's consent. The recordings are made under the authority of sections 3 and 14 of *The Lakehead University Act, 1965*. Questions about the collection of the images and sounds in the recordings may be directed to Dr. Todd Randall, Dean of the Faculty of Science and Environmental Studies, Thunder Bay campus.

STUDENT ACCESSIBILITY SERVICES Lakehead University is committed to achieving full accessibility for persons with disabilities. Part of this commitment includes arranging academic accommodations for students with disabilities to ensure they have an equitable opportunity to participate in all of their academic activities. If you are a student with a disability and think you may need accommodations, you are strongly encouraged to contact Student Accessibility Services (SAS) and register as early as possible. For more information, please visit <https://www.lakeheadu.ca/faculty-and-staff/departments/services/sas>.

Topic	Contents	Readings
1	Introduction to course; What is archaeology?	Introduction
2	A short history of archaeology	Ch. 1
3	The nature of the archaeological record The concept of culture Archaeological data (artifact, assemblage, site, settlement patterns, etc.)	Ch. 2
4	<u>Chronometric dating:</u> Relative dating (stratigraphy, seriation) Absolute dating (e.g., K-Ar; radiocarbon; U series)	Ch. 4
5	<u>Finding and assessing archaeological sites:</u> Archaeological survey; remote sensing Site assessment <u>Archaeological excavation:</u> Importance of multidisciplinary teams Types of excavation Process of excavation	Ch. 3
Oct. 7	Midterm exam	
Oct. 12 – 16	Study break	
6	Artifact typology and classification Lithic technology and analysis	Ch. 7 Video: Flintknapping demonstration
Oct. 21	YouTube critique assignment due	
7	Ceramic technology and analysis Other types of artifacts	Ch. 7 Video: How Blackduck pottery was made
8	<u>Reconstructing subsistence & diet:</u> Zooarchaeology Archaeobotany	Ch. 6
9	Environmental change and human adaptation Mechanisms and scales of climate change Methods	Ch. 6
10	Ethnoarchaeology Social organization/ social archaeology Cognitive archaeology	Ch. 5 & 9
	Written assignment due (Dec. 7)	
	Final exam (TBA)	