

## FUNDAMENTALS OF ARCHAEOLOGY (ANTH 2137)

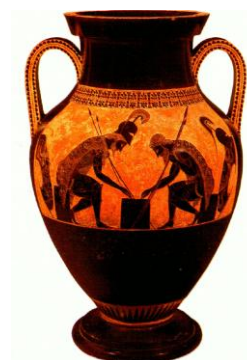
Instructor: Dr. M. Boyd

Office: BB-2001-F

Phone: (807) 343-8279

E-mail: [matthew.boyd@lakeheadu.ca](mailto:matthew.boyd@lakeheadu.ca)

Office hours: M/W 2:30 – 3:15 pm or by appointment



### Course description:

This course will introduce you to the practice and application of modern archaeology, focusing on archaeological methods. Topics include: chronometric dating; methods of archaeological survey and excavation; analysis of pottery and stone tools; environmental archaeology (archaeobotany, geoarchaeology and zooarchaeology); and settlement patterns and spatial analysis. *Class participation is encouraged!*

### Required text:

Renfrew, C. & Bahn, P. 2016. Archaeology: Theories, Methods and Practice. New York: Thames & Hudson. 7<sup>th</sup> Edition.

### Grading:

1. Attendance (“hands-on” sessions): **5%**

2. Written assignment: **25%** (about 10 pp. double spaced, not including references/figures)

- Write a scholarly paper using peer-reviewed sources on any topic covered in this class or your textbook.
- Please follow a standard style guide for the social sciences such as MLA or APA when formatting your paper.

3. Midterm exam: **30%**

4. Final exam (December): **40%**

### Grade Distributions:

<b>A+</b>	90-100%	<b>B</b>	70-79%	<b>D</b>	50-59%	<b>F</b>	0-39%
<b>A</b>	80-89%	<b>C</b>	60-69%	<b>E</b>	40-49%		

- Students are responsible for ensuring that they are properly registered in this class.
- See the LU Calendar for information on academic integrity, examinations, grade appeals, and other important regulations of which you should be aware.
- Late term papers and other assignments will be deducted **10% per day** from the final grade for that assignment.
- The written assignment may be submitted to the Anthropology office between 8:30 and 4:30 PM on the due date or placed in the mailbox after hours.

Topic	Contents	Readings
1	Introduction to course; What is archaeology?	Introduction
2	A short history of archaeology	Ch. 1
3	The nature of the archaeological record The concept of culture Archaeological data (artifact, assemblage, site, settlement patterns, etc.)	Ch. 2
4	<u>Chronometric dating:</u> Relative dating (stratigraphy, seriation) Absolute dating (e.g., K-Ar; radiocarbon; U series)	Ch. 4
<b>HANDS-ON 1</b>	<b>Tour of an archaeological site</b>	
5	<u>Finding and assessing archaeological sites:</u> Archaeological survey; remote sensing Site assessment <u>Archaeological excavation:</u> Importance of multidisciplinary teams Types of excavation Process of excavation	Ch. 3
<b>Oct. 9</b>	<b>Midterm exam (75 min.)</b>	
<b>Oct. 14-18</b>	<b>Study break</b>	
6	Artifact typology and classification Lithic technology and analysis	Ch. 8
<b>HANDS-ON 2</b>	<b>Lithic artifacts</b>	
7	Ceramic technology and analysis Other types of artifacts	Ch. 8
<b>HANDS-ON 3</b>	<b>Pottery</b>	
8	<u>Reconstructing subsistence &amp; diet:</u> Zooarchaeology Archaeobotany	Ch. 7
9	Environmental change and human adaptation Mechanisms and scales of climate change Methods	Ch. 6
10	Ethnoarchaeology Social organization/ social archaeology	Ch. 5 & 9
	<b>Written assignment due (Dec. 2)</b>	
	<b>Final exam (TBA)</b>	