

**Memorandum**

**To: Karen Roche, Secretary of Senate**

**From: Laure Paquette, Chair, Senate Budget Committee**

**Re: Report of the Senate Budget Committee for the November  
11<sup>th</sup> Senate Meeting**

**Date: 25 October 2011**

---

The Senate Budget Committee met on October 25th, 2011. This report presents a summary of the status of items discussed or recommended for approval by the committee. Questions can be directed to the chair via email at [Laure.Paquette@lakeheadu.ca](mailto:Laure.Paquette@lakeheadu.ca) or telephone (ext. 8231).

Items for action

The following calendar changes were recommended for approval.

- ▶ Calendar Changes Referred from Senate Meeting on January 28, 2011

Faculty of Science and Environmental Studies  
Geology changes

- ▶ Calendar Changes Referred from Senate Meeting on May 13, 2011

Faculty of Social Sciences and Humanities  
Philosophy 2711 to Philosophy 3711 (2012-2013)

- ▶ Calendar Changes Referred from Senate Meeting on September 23, 2011

Faculty of Health and Behavioural Sciences  
Psychology Academic Regulations

Social Work Replace SW4405 with SW3401 and SW3401 with SW4405

Faculty of Business Administration

Change in elective courses for Minor in Human Resource Management/Industrial Relations

Faculty of Engineering

Electrical Engineering Change COMP 0411 WA to Comp 1411 WA

Faculty of Health and Behavioural Sciences

MPH Nursing - PHCNP

Psychology Changes to Psychology MSc and PHD

After the meeting, it became clear that the Psychology Changes to Psychology MSc and PhD had been presented to the committee ahead of Graduate Studies's subcommittee's consideration, and will therefore return to Senate Budget at a later date.

Items for information

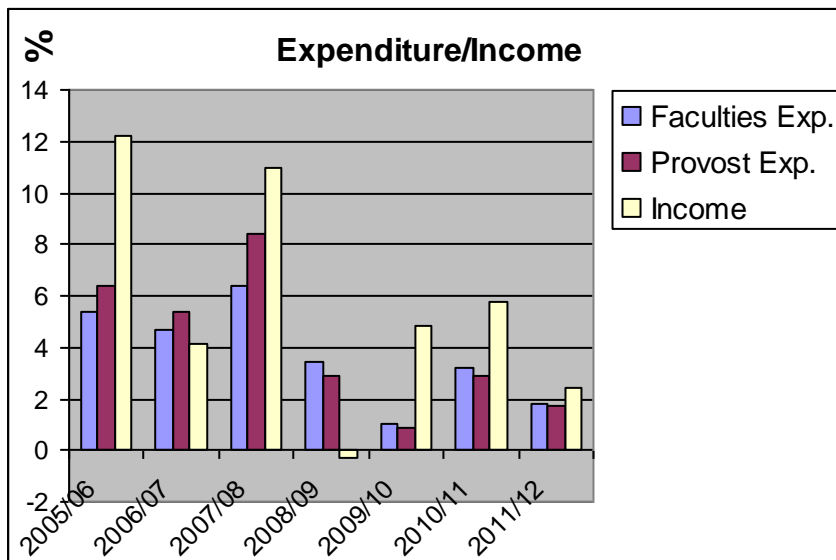
1. Evolution of University Income and Faculty Expenditures

The study carried out last year, which is attached, was updated to include the most recent figures.

2. The committee received a report on the PhD in Chemical and Materials Science, the substance of which is appended.

Source: <http://finance.lakeheadu.ca/operations-statement/>

	Actual operating expenditure		Actual operating income
	Faculties Exp.	Provost Exp.	Income
2005/06	5.4	6.4	12.2
2006/07	4.7	5.4	4.1
2007/08	6.4	8.4	11
2008/09	3.4	2.9	-0.3
2009/10	1	0.9	4.8
2010/11	3.2	2.9	5.8
2011/12	1.8	1.7	2.4
total	25.9	28.6	40




---

Laure Paquette, Senate Budget Committee