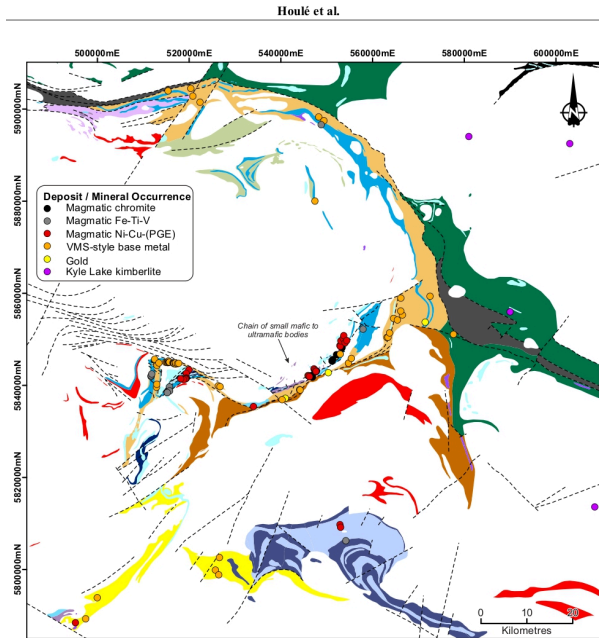


Magmatic Evolution of Intrusions within the McFaulds Greenstone Belt, Ontario

MSc Student: Pierce Grogan

Supervisor: Dr. Pete Hollings



The project will investigate the magmatic evolution and alteration chemistry of several poorly understood intrusions in the Ring of Fire in Northern Ontario, in order to better define the Ni-Cu-PGE and chromite mineralization. Collected core and surface samples will be characterized using a combination of petrology, whole rock geochemistry, U-Pb geochronology and radiogenic isotopes.

The Ring of Fire, simplified geological map (Houlé et al., 2020)



Poikilitic Peridotite from the Area 7 intrusion



Winisk River, Sampled Outcrop



Ultramafic intrusive core samples from the Renforth Intrusion