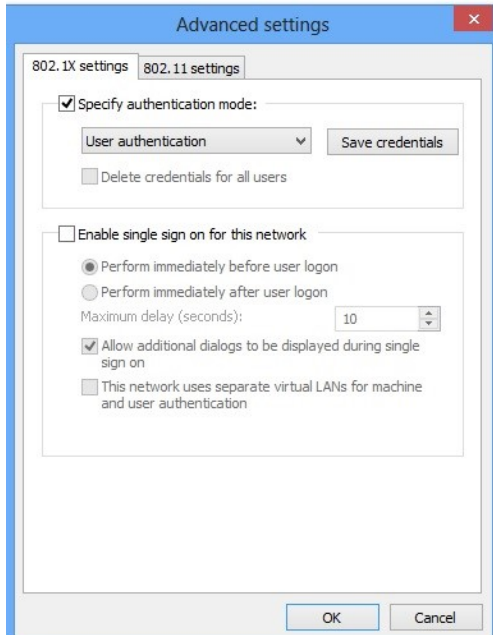
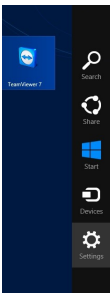


Specify authentication mode and choose **User Authentication** from the dropdown. Click OK, and click OK to any remaining Windows.



If the Network Authentication window pops up, enter your myInfo/myEmail username and password. If the window does not pop up you can connect to the LakeheadU network from either of these options on your Windows 8 Operating System.

If on Desktop click on the **internet access icon**



If on Tile View, click **Settings**.

TSC supports wireless network access using Wi-Fi technology in many areas across campus:

- Agora
- ATAC
- Chancellor Paterson Library
- Bora Laskin
- Main Cafeteria
- PACI
- Residence Cafeteria
- Hangar
- Senate Chambers
- Orillia Academic Building
- Orillia Heritage Place
- Regional Centre
- Music and Visual Arts Building
- Orillia Residence
- School of Nursing
- Thunder Bay Residences: Bartley, Avila, Bearskin Lake, Deerlake Ridge, North Spirit Heights, Schrieber, Balmertown, Jellicoe, Shebandowan, Armstrong, Upsala

### Contact Us



**Phone:** 807-346-7777  
**Email:** helpdesk@lakeheadu.ca  
**Website:** helpdesk.lakeheadu.ca  
**In person:** Chancellor

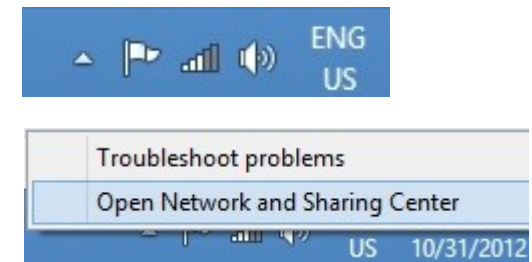
Paterson Library main floor. Refer to our website for current hours of operation.



# WINDOWS 8 WIRELESS SETUP



Right click on internet access icon , and click **Open Network and Sharing Center**



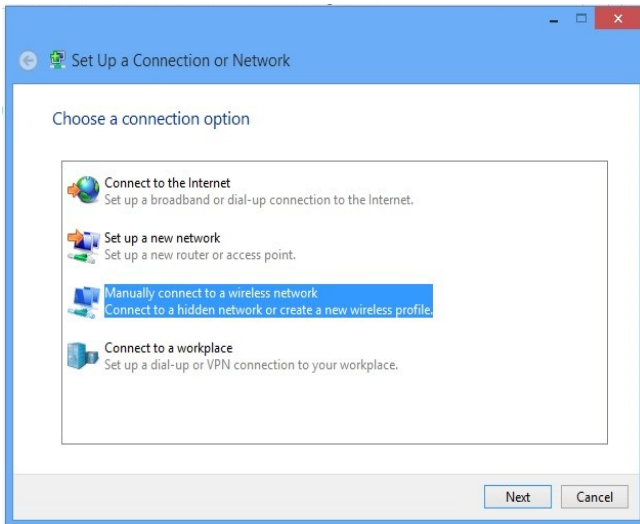
Click **Setup a new connection or network**

Change your networking settings

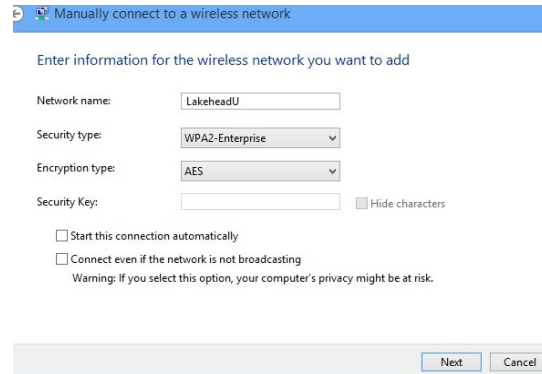
 [Set up a new connection or network](#)  
Set up a broadband, dial-up, or VPN connection; or set up a router or access point.

 [Troubleshoot problems](#)  
Diagnose and repair network problems, or get troubleshooting information.

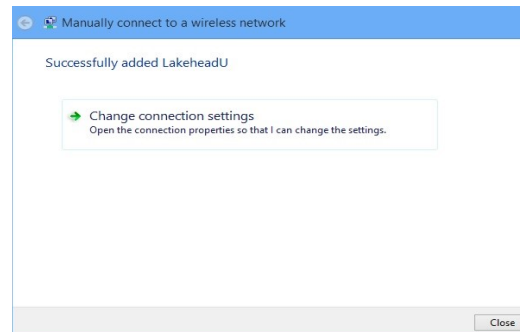
Select **Manually connect to a wireless network**



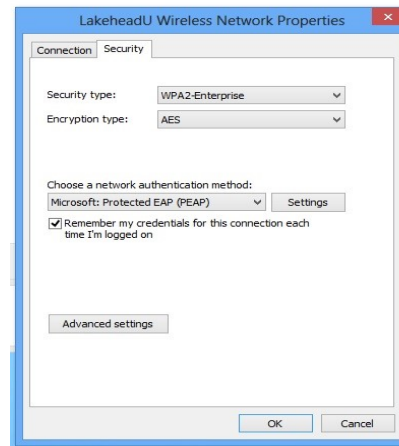
Enter Network name: **LakeheadU**  
Security type - select **WPA2 Enterprise**  
Encryption type should be **AES**.  
Click **Next**



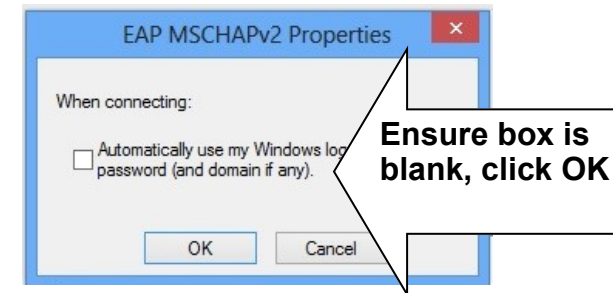
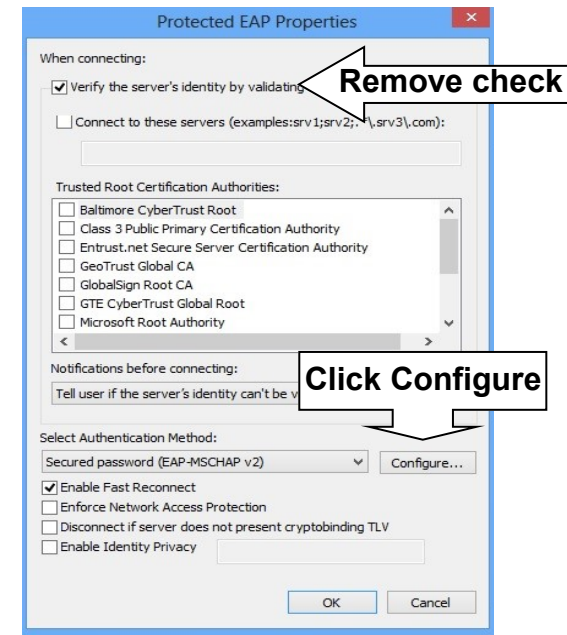
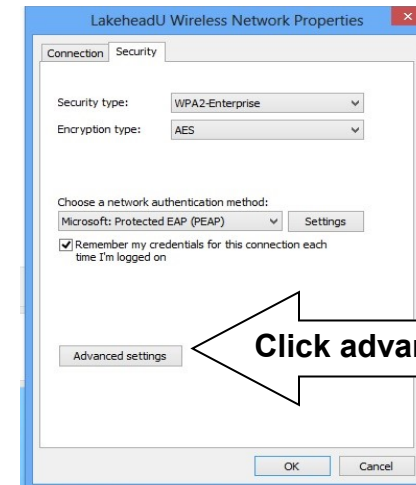
Click **Change connection settings**



Click **Security tab** and click **Settings**



Click **OK** on Protected EAP Properties Menu



Click **advanced settings**