

If the certificate is not displaying please try the following:

1. Click on the Airport/wireless icon in the upper right hand side.
2. Click Join other networks, enter all the information and try to connect.
3. If no certificate displays at first, turn off airport. To do this click the airport/wireless icon at the top and choose "turn airport off". Then wait 10 seconds and turn it back on. You should be prompted to accept the certificate.

TSC supports wireless network access using Wi-Fi technology in many areas across campus:

- Agora
- ATAC
- Bora Laskin
- Braun
- Chancellor Paterson Library
- Hangar
- Main Cafeteria
- Music and Visual Arts Building
- Orillia All Buildings
- PACI
- Regional Centre
- Residence Cafeteria
- Ryan Building
- School of Nursing
- Senate Chambers
- Thunder Bay Residences: All

Contact Us



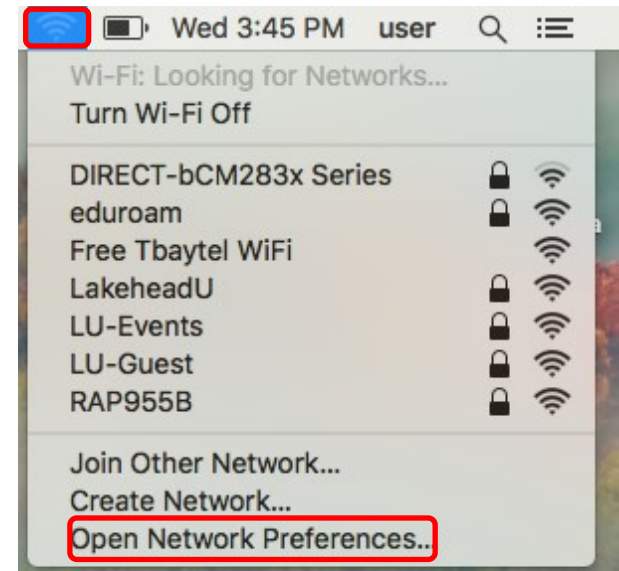
Phone: 807-346-7777
Email: helpdesk@lakeheadu.ca
Website: helpdesk.lakeheadu.ca
In person: Chancellor
 Paterson Library main floor.
 Monday to Friday 8am-5:00pm

MAC OSX WIRELESS SETUP

Mac running OSX 10.5.1 or later (Leopard)

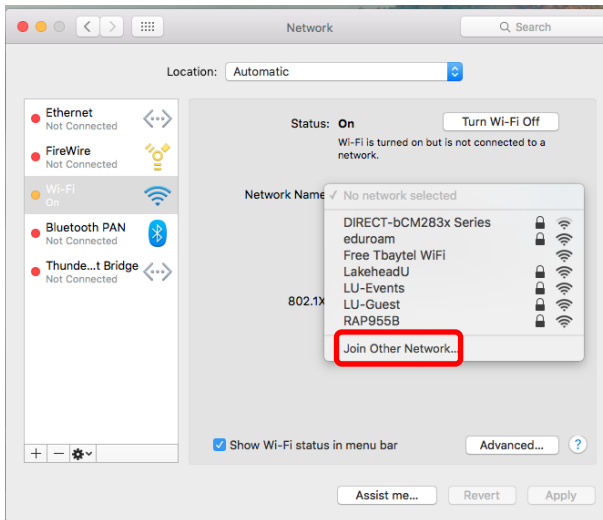
Make sure your system is fully up to date (Apple Menu > Software update)

From the **Apple Menu**, select **System Preferences** and then select the **Network** icon.



Select **Airport, Wireless or WiFi** from the list on the left.

Change the **Network Name**, select **Join Other Network**.



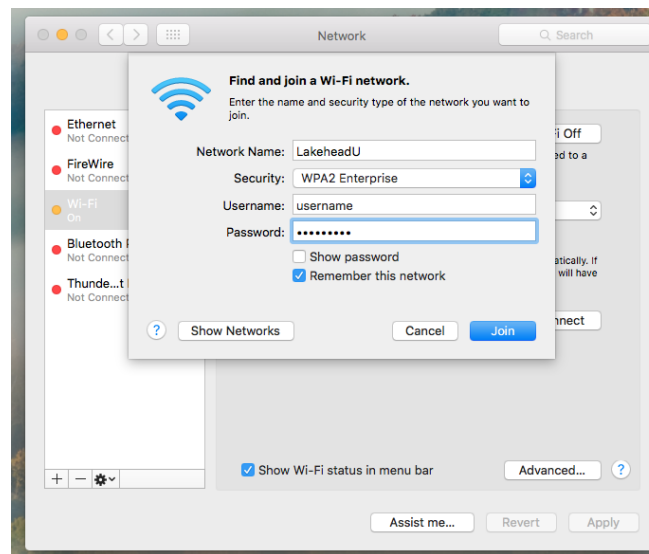
Under Network Name, enter **LakeheadU** exactly as shown.

Under **Security**, select **WPA2 Enterprise** from the drop down menu.

Enter your Lakehead myEmail/myInfo information for **Username and Password**.

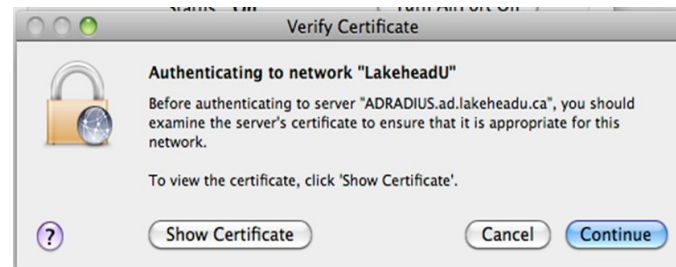
Leave the 802.1X setting as **Automatic** and check the box **Remember this network**.

Finally click the **Join** button.



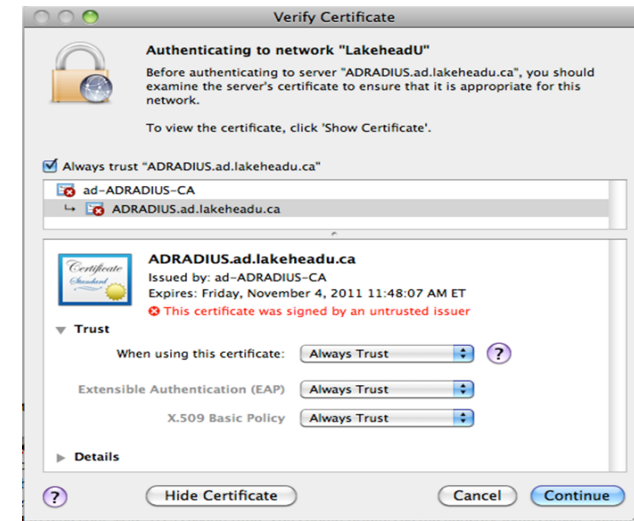
You will be prompted to verify the certificate.

Click the **Show Certificate** button and click **Continue**.

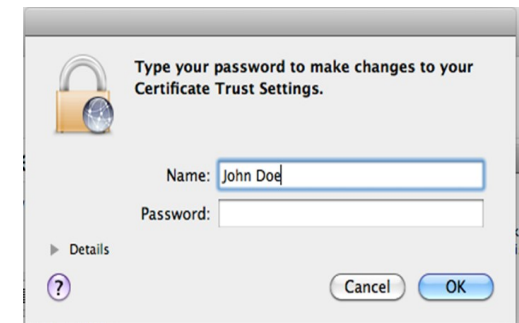


Verify the certificate is **ADRADIUS.ad.lakeheadu.ca** and check the box beside **Always trust "ADRADIUS.ad.lakeheadu.ca"**.

Click **Continue**.



You will be asked for your computer's password (not your email this time) to change the certificate trust settings.



Finally, on the Network Window, click the **Apply** button in the lower right.

In about 20-30 seconds, the status of the connection should read **Authenticated** and the Network Name should read **LakeheadU**.

Close the Network window.